

# Exhibit B

## Project Drawings



**FILED**

06/08/26

04:59 PM

A2606007

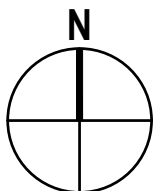
- B1 Vicinity Map
- B2 Site Map
- B3 Plan & Profile
- B4 UPRR Crossing Bridge
- B5 Construction Staging and Temporary Grade Crossing



PROPOSED PARADISO DEL MARE  
 MULTI-USE TRAIL OVERHEAD CROSSING  
 MP 352.84  
 DOT No. 972559V, CPUC No. 001E-325.84-AD  
 LAT 34.436972° N  
 LONG 119.934083° W

### VICINITY MAP

SCALE: 1" = 1000'




Bar is one inch on original size sheet  
 0 ————— 1"

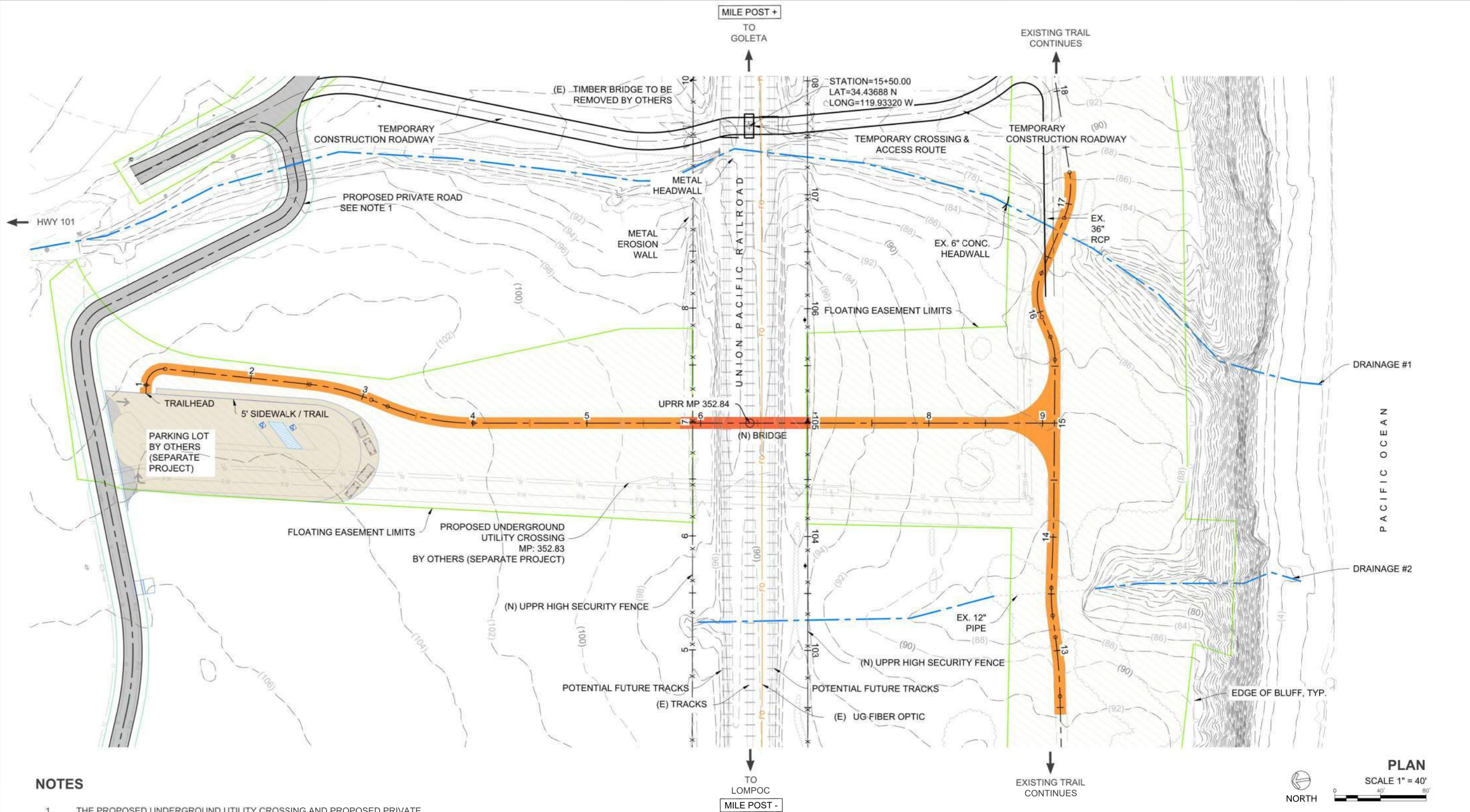

**GHD Inc.**  
 943 Reserve Drive  
 Roseville California 95678 USA  
 T 1 916 782 8688  
[www.ghd.com](http://www.ghd.com)



Client	CPUC APPLICATION
Project	PARADISO DEL MARE CROSSING
Project No.	12619521
Date	4/09/2026

Title	<b>EXHIBIT B1 - VICINITY MAP</b>
Sheet No.	

Exhibit B2 Site Plan



NOTES

1. THE PROPOSED UNDERGROUND UTILITY CROSSING AND PROPOSED PRIVATE ROAD ARE BY OTHERS. THIS IS A SEPARATE PROJECT.
2. EXISTING TIMBER BRIDGE TO BE REMOVED BY OTHERS.

LEGEND

- TRAIL
- BRIDGE
- FLOATING EASEMENT

PLAN

SCALE 1" = 40'



SANTA BARBARA COUNTY  
**Trails Council**



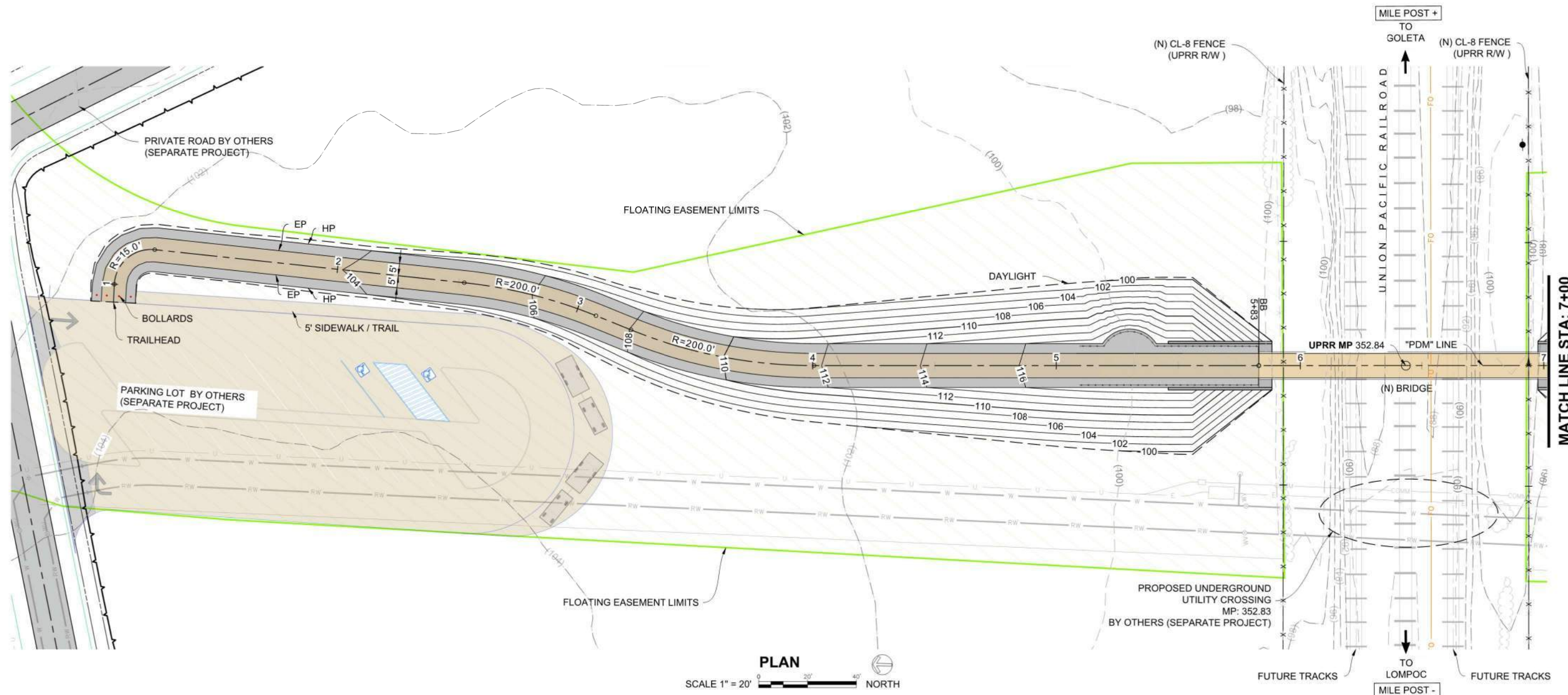
BENGAL ENGINEERING  
360 S. Hope Ave  
Santa Barbara, CA

HS / MW	HS / LC	SO	30% UPRR SUBMITTAL
Design	Drawn	Chk'd	

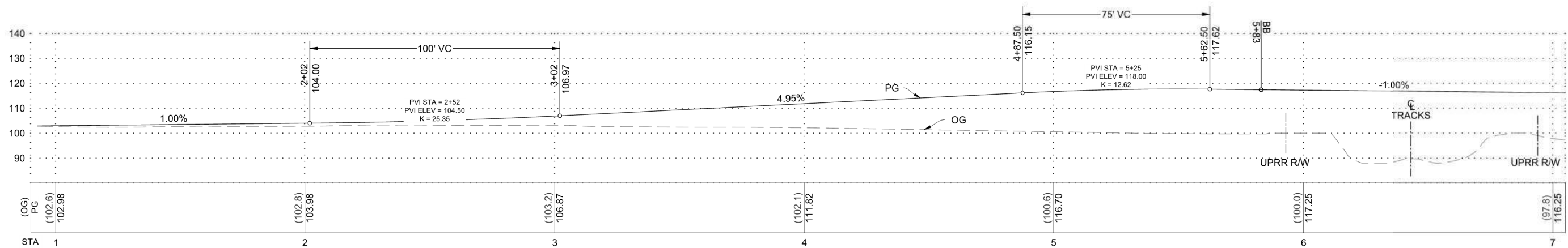
352.84	SANTA BARBARA	SANTA BARBARA COUNTY, CA
UPRR MILE POST	SUBDIVISION	
	LOCATION	W 119° 56' 02.7"
	LATITUDE	N 034° 26' 13.1"

CALIFORNIA COASTAL TRAIL AT PARADISO DEL MARE  
SITE PLAN

PBW. NO.	S-1
BID NO.	SHT. DES.
DWG. NO.	
SHT. 5 OF 18	



**PLAN**  
SCALE 1" = 20'



**PROFILE "PDM" LINE**  
SCALE 1" = 20'



**BENGAL ENGINEERING**  
360 S. Hope Ave  
Santa Barbara, CA

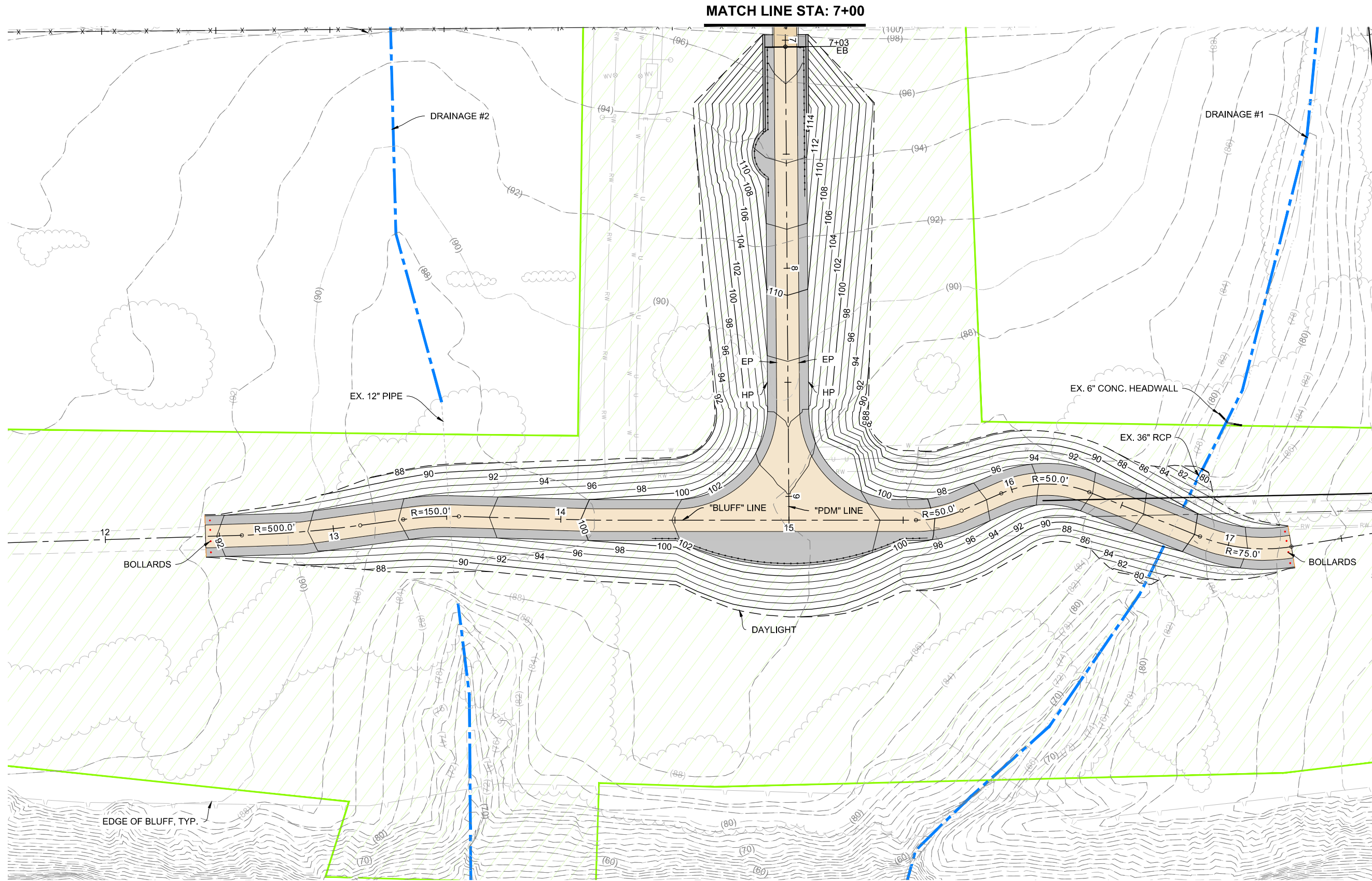
HS / MW  
HS / LC  
SO  
Design  
Drawn  
Chk'd  
30% UPRR  
SUBMITTAL

352.84  
UPRR MILE POST  
SANTA BARBARA COUNTY, CA  
LOCATION  
N 03° 26' 13.1" LATITUDE  
W 119° 56' 02.7" LONGITUDE

CALIFORNIA COASTAL TRAIL AT PARADISO DEL MARE  
MOUNTAINSIDE TRAIL LAYOUT  
PLAN & PROFILE

PBW. NO.  
LO-1  
BID NO. SHT. DES.  
DWG. NO.  
SHT. 6 OF 18

FOR REDUCED PLANS  
ORIGINAL SCALE IS IN INCHES



MATCH LINE STA: 7+00

PLAN  
SCALE 1" = 20'



**BENGAL ENGINEERING**  
360 S. Hope Ave  
Santa Barbara, CA

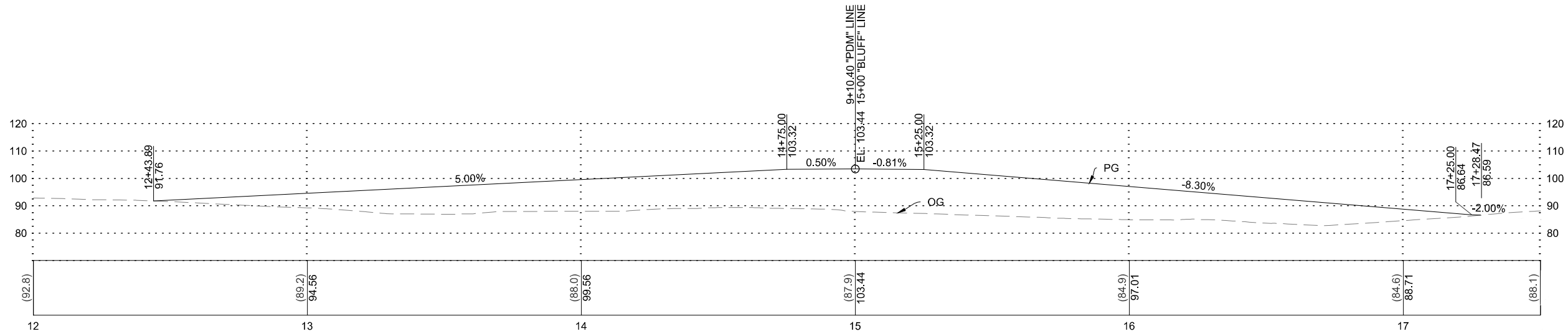
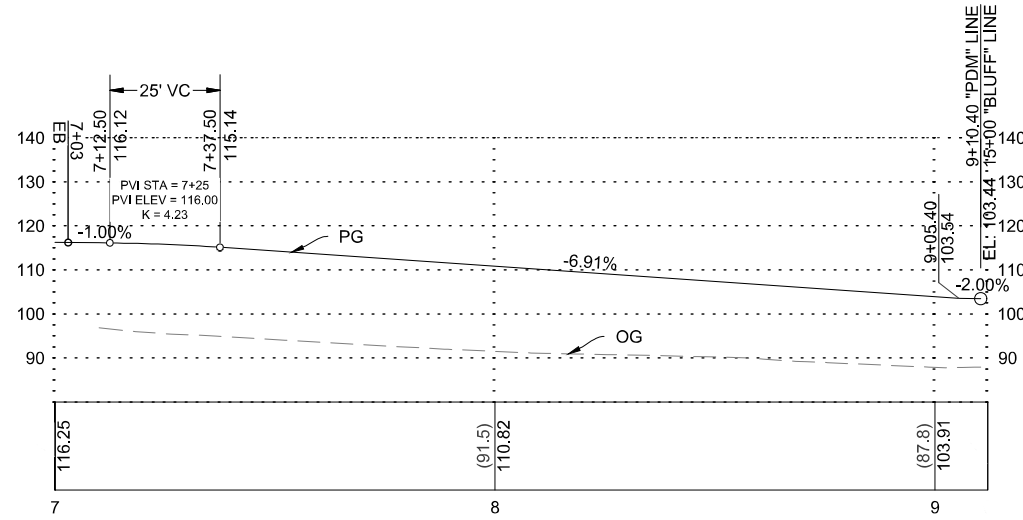
HS / MW	HS / LC	SO
Design	Drawn	Chk'd
30% UPRR		SUBMITTAL

352.84	SANTA BARBARA
UPRR MILE POST	SUBDIVISION
	SANTA BARBARA COUNTY, CA
	LOCATION
N 034° 26' 13.1"	W 119° 56' 02.7"
LATITUDE	LONGITUDE

CALIFORNIA COASTAL TRAIL AT PARADISO DEL MARE  
OCEANSIDE TRAIL LAYOUT  
PLAN

PBW. NO.	LO-2
BID NO.	SHT. DES.
DWG. NO.	
SHT. 7 OF 18	

FOR REDUCED PLANS  
ORIGINAL SCALE IS IN INCHES



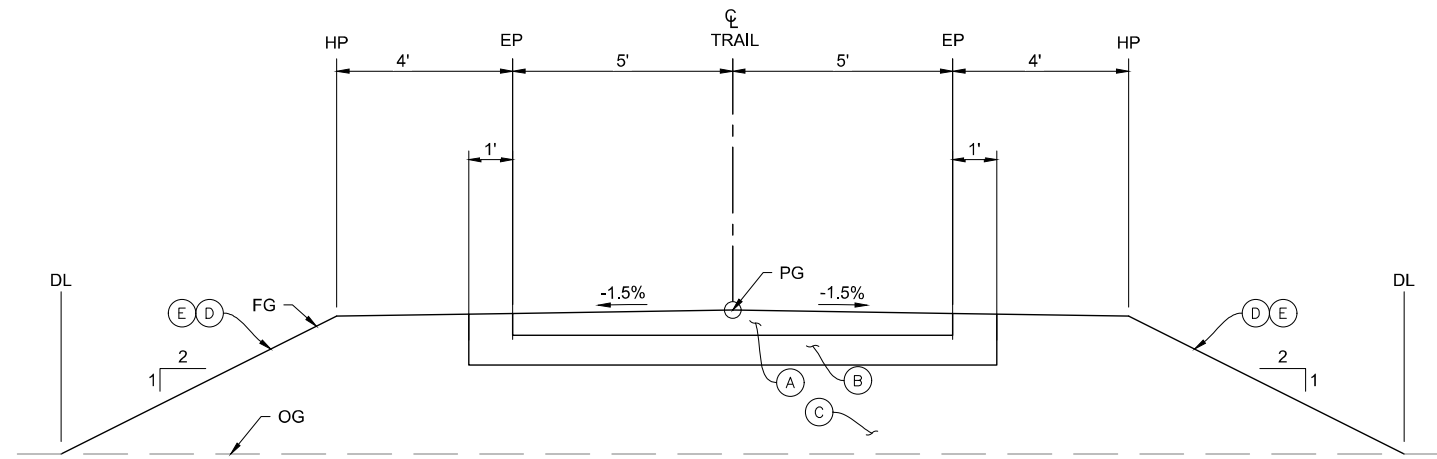
**BENGAL ENGINEERING**  
360 S. Hope Ave  
Santa Barbara, CA

HS / MW	HS / LC	SO
Design	Drawn	Chk'd
30% UPRR SUBMITTAL		

352.84 UPRR MILE POST	SANTA BARBARA SUBDIVISION
SANTA BARBARA COUNTY, CA	
LOCATION	
N 03° 28' 13.1"	W 119° 56' 02.7"
LATITUDE	LONGITUDE

CALIFORNIA COASTAL TRAIL AT PARADISO DEL MARE  
OCEANSIDE TRAIL LAYOUT  
PROFILES

PBW. NO.	LO-3
BID NO.	SHT. DES.
DWG. NO.	
SHT. 8 OF 18	



**PROPOSED TRAIL TYPICAL CROSS SECTION**  
NO SCALE

**TYPICAL SECTION CONSTRUCTION NOTES:**

- (A) 6" LOCALLY SOURCED AGGREGATE (COMPACTED)
- (B) 12" AB (CLASS 2)
- (C) IMPORT BORROW
- (D) HYDROSEED (CALIFORNIA NATIVE MIX)
- (E) ROLLED EROSION CONTROL PRODUCT (JUTE MESH)



**BENGAL ENGINEERING**  
380 S. Hope Ave  
Santa Barbara, CA

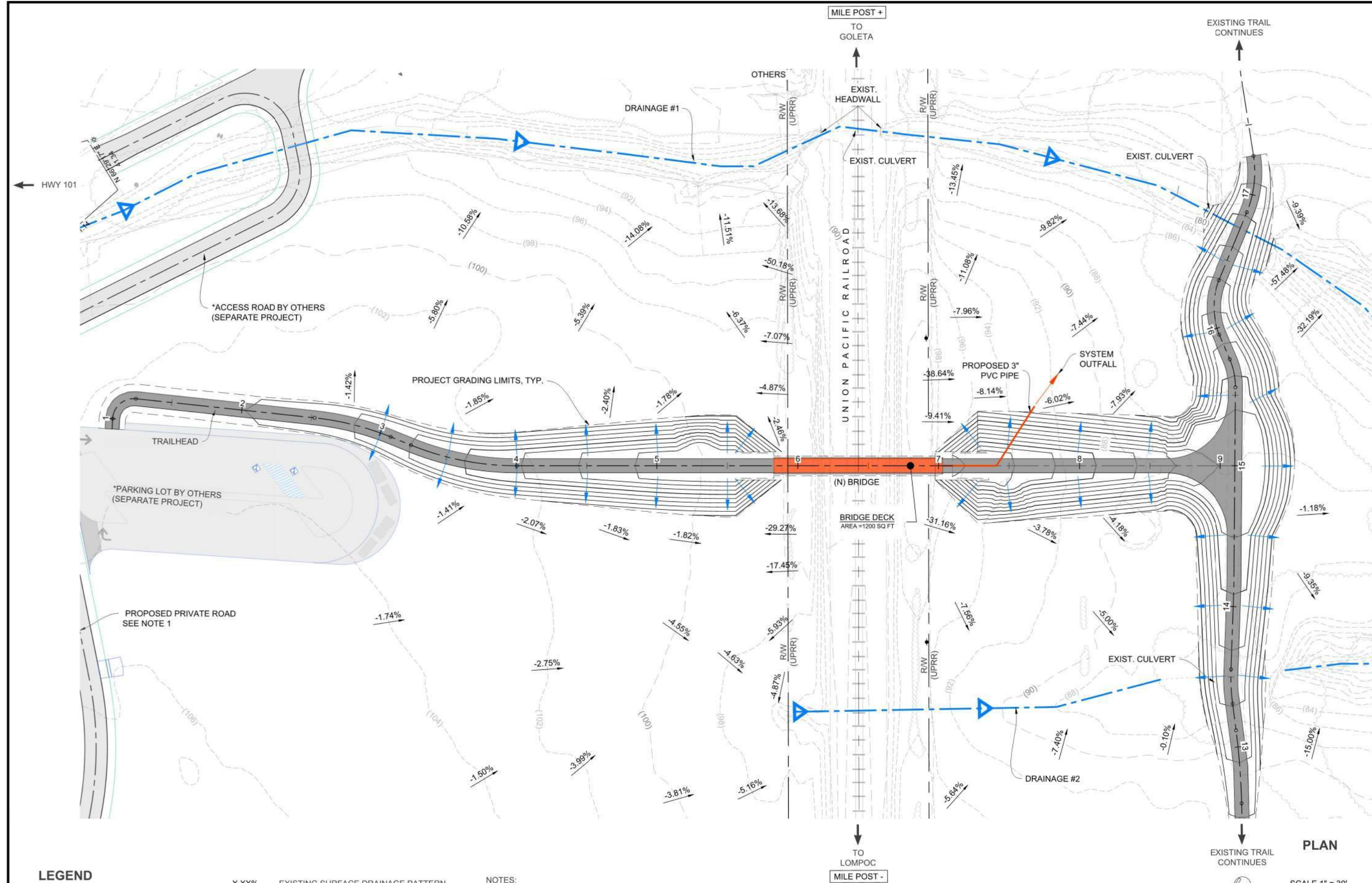
HS / MW	HS / LLC	SO
Design	Drawn	CHK'G
		30% UPRR
		SUBMITTAL

SANTA BARBARA	SANTA BARBARA COUNTY, CA
SUBDIVISION	LOCATION
352.84	N 034° 28' 13.1"
UPRR MILE POST	LATITUDE
	W 119° 56' 02.7"
	LONGITUDE

**CALIFORNIA COASTAL TRAIL AT PARADISO DEL MARE**  
**TYPICAL CROSS SECTIONS**

PBW. NO.	X-1
BID NO.	SHT. DES.
DWG. NO.	
SHT. 9 OF 18	

Exhibit B3 Plans & Profile



**LEGEND**

- TRAIL
- BRIDGE
- X.XX% EXISTING SURFACE DRAINAGE PATTERN
- EMBANKMENT DRAINAGE PATTERN
- BRIDGE DECK DRAINAGE SYSTEM OUTFLOW
- ▶ EXISTING DRAINAGE FLOW DIRECTION

**NOTES:**  
 1. PROPOSED BRIDGE STRUCTURE WILL NOT CHANGE THE QUANTITY AND CHARACTERISTICS OF THE FLOW IN RAIL ROAD DITCHES AND DRAINAGE STRUCTURES.

**PLAN**

NORTH

SCALE 1" = 30'

0 30' 60'

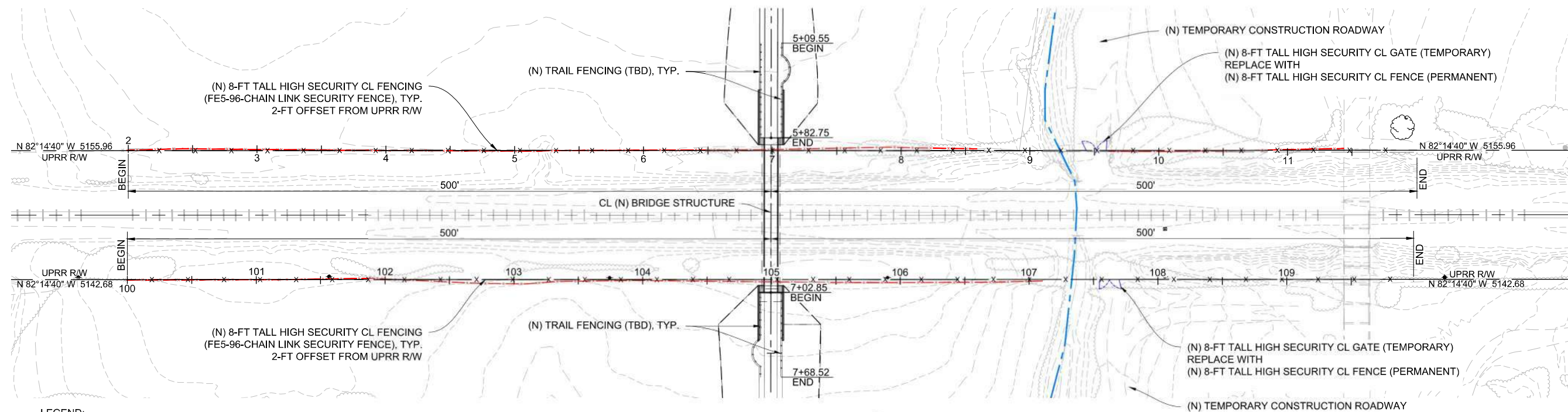
**SANTA BARBARA COUNTY**  
**Trails Council**

**BENGAL ENGINEERING**  
 360 S. Hope Ave  
 Santa Barbara, CA

352.84	SANTA BARBARA	SANTA BARBARA COUNTY, CA	30% UPRR SUBMITTAL
UPRR MILE POST	SUBDIVISION	LOCATION	DESIGN CHK'D
		N 034° 26' 13.1" LATITUDE	30% UPRR SUBMITTAL
		W 119° 56' 02.7" LONGITUDE	

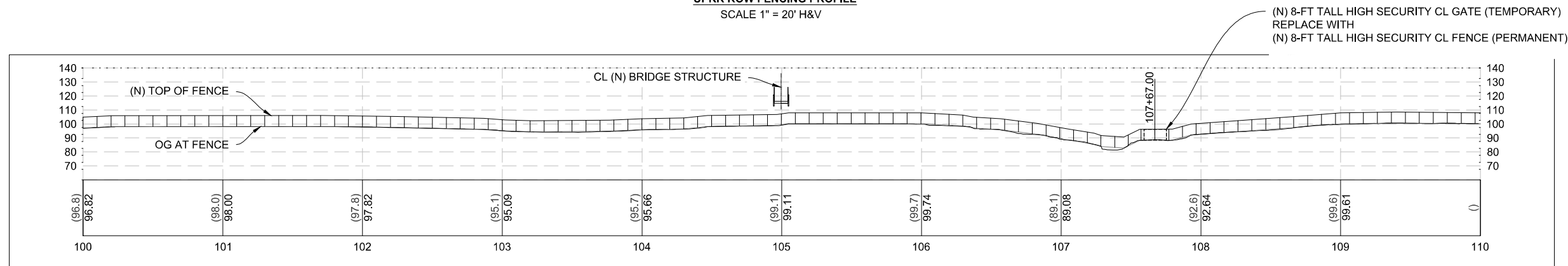
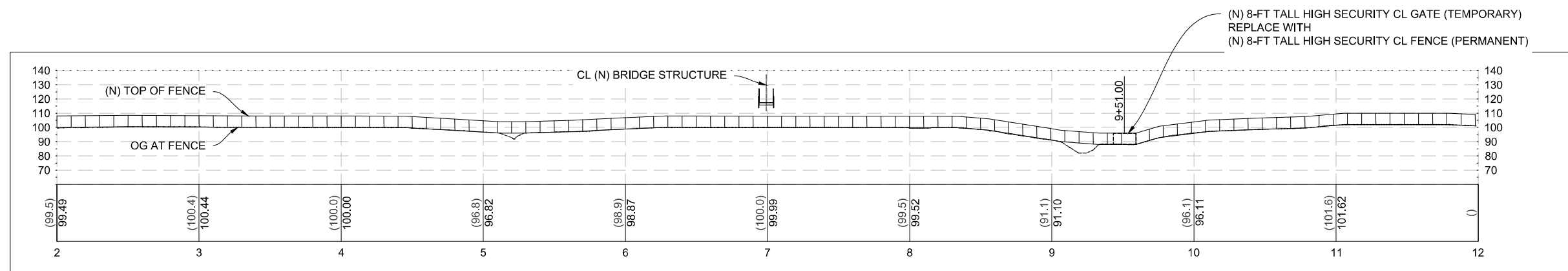
**CALIFORNIA COASTAL TRAIL AT PARADISO DEL MARE**  
**DRAINAGE**

PBW. NO. D-1  
 BID NO. SHT. DES.  
 DWG. NO.  
 SHT. 10 OF 18



- LEGEND:
- x--- REMOVE (E) FENCE TYPE BW
  - x--- (N) FE-96-CHAIN LINK SECURITY FENCE PER UPRR STD 0077A
  - o--- (N) TRAIL FENCING (TBD)

PLAN  
SCALE 1" = 20'



BENGAL ENGINEERING  
360 S Hope Ave  
Santa Barbara, CA

Design: HIS / MW  
Drawn: HIS / LC  
Checked: SO  
30% UPRR SUBMITTAL

SANTA BARBARA SUBDIVISION  
SANTA BARBARA COUNTY, CA  
LOCATION  
N 034° 28' 13.1" LATITUDE  
W 119° 56' 02.7" LONGITUDE

CALIFORNIA COASTAL TRAIL AT PARADISO DEL MARE  
FENCING PLAN

PBW. NO.  
BID NO. F-1  
SHT. DES.  
DWG. NO.  
SHT. 11 OF 18





**BENGAL ENGINEERING**  
360 S. Hope Ave  
Santa Barbara, CA

Design	H.S./M.W.	UPRR
Drawn	J.H.S./L.C.	SUBMITTAL
Chkd	S.D.	

SANTA BARBARA	SANTA BARBARA
SUBDIVISION	SUBDIVISION
SANTA BARBARA COUNTY, CA	SANTA BARBARA COUNTY, CA
LOCATION	LOCATION
W 119° 56' 02.7"	LONGITUDE

352.84	N 034° 26' 13.1"
UPRR MILE POST	LATITUDE
SANTA BARBARA COUNTY, CA	
LOCATION	
W 119° 56' 02.7"	LONGITUDE

CALIFORNIA COASTAL TRAIL AT PARADISO DEL MARE  
BRIDGE  
FOUNDATION PLAN

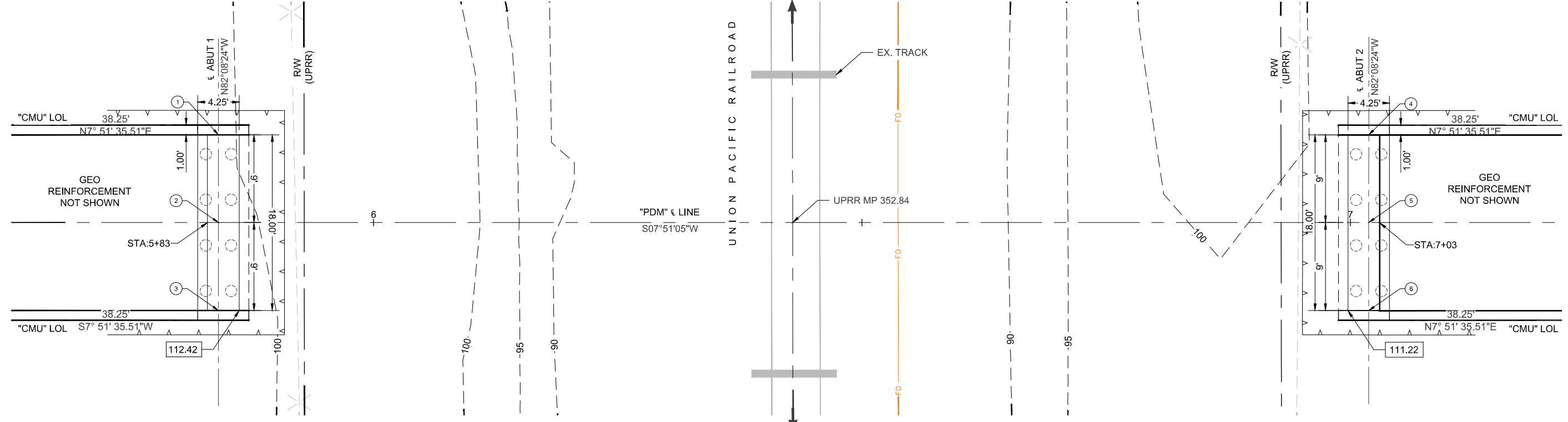
PBW. NO.	
BID. NO.	SHT. DES.
DWG. NO.	
SHT.	OF 18

FOR REDUCED PLANS  
ORIGINAL SCALE IS IN INCHES

F:\Bengal\SB Trails Council - PDM - Documents\CAD\Production Drawings\3. PDM - GP.dwg  
5/12/2026 10:52 AM

RR SOUTH  
TO GOLETA  
NEAREST TIMETABLE STA: ELLWOOD (MP 355.72)

RR NORTH  
TO LOMPOC  
NEAREST TIMETABLE STA: CAPITAN (MP 346.50)



XX.X INDICATES BOTTOM OF ABUTMENT FOOTING ELEVATION.

**PLAN**  
NORTH

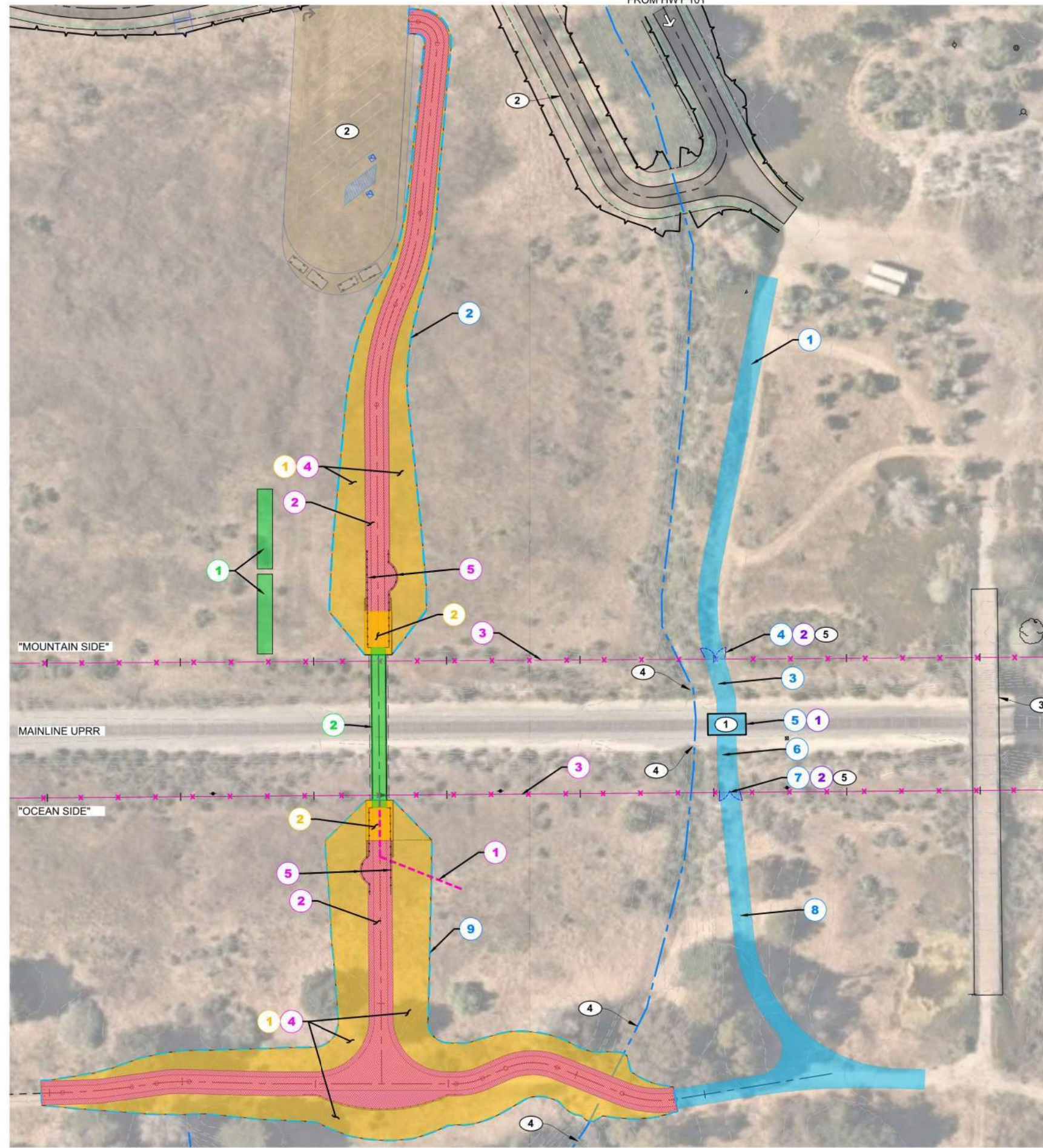
**FOUNDATION PLAN**  
SCALE 1" = 5'

ABUTMENT FOOTING COORDINATES

POINT #	Northing	Easting
①	N34° 26' 13.87"	W119° 55' 57.91"
②	N34° 26' 13.88"	W119° 55' 58.02"
③	N34° 26' 13.89"	W119° 55' 58.12"
④	N34° 26' 12.71"	W119° 55' 58.08"
⑤	N34° 26' 12.73"	W119° 55' 58.18"
⑥	N34° 26' 12.74"	W119° 55' 58.29"

**Exhibit B5 Construction Staging and Temporary Grade Crossing**

CONSTRUCTION ACCESS FROM HWY 101



**PLAN**  
SCALE 1" = 20'  
NORTH

TASK #	PHASE 1
1	CLEAR AND GRUB / CONSTRUCT TEMP. CONSTRUCTION ROADWAY (OUTSIDE UPRR ROW) TOWARD TEMP. UPRR GRADE CROSSING (CONTRACTOR)
2	CLEAR AND GRUB / ROUGH GRADE MOUNTAIN SIDE TRAIL (CONTRACTOR)
3	CLEAR AND GRUB / CONSTRUCT ACCESS ROAD (WITHIN UPRR ROW) TO TEMPORARY GRADE CROSSING INSIDE UPRR ROW (CONTRACTOR)
4	INSTALL TEMPORARY GATE AT RAIL CROSSING (CONTRACTOR)
5	CONSTRUCT TEMPORARY GRADE CROSSING AT MP:352.90 (UPRR)
6	CLEAR AND GRUB / CONSTRUCT ACCESS ROAD WITHIN UPRR ROW (CONTRACTOR)
7	INSTALL TEMPORARY GATE AT RAIL CROSSING (CONTRACTOR)
8	CLEAR AND GRUB / CONSTRUCT TEMP. CONSTRUCTION ROADWAY FROM UPRR ROW TO EXISTING TRAIL INSIDE FLOATING EASEMENT (CONTRACTOR)
9	CLEAR AND GRUB / ROUGH GRADE OCEAN SIDE TRAIL (CONTRACTOR)

TASK #	PHASE 2
1	GRADE TRAIL APPROACHES AND EMBANKMENT FILL (CONTRACTOR)
2	CONSTRUCT MSE WALL & BRIDGE ABUTMENTS (CONTRACTOR)

TASK #	PHASE 3
SEE BRIDGE ERECTION NOTES BELOW FOR MORE INFORMATION	
1	FURNISH AND DELIVER PREFABRICATED STEEL TRUSS BRIDGE (ASSEMBLE ON SITE) (CONTRACTOR)
2	ERECT AND PLACE PREFABRICATED STEEL TRUSS BRIDGE ON BRIDGE ABUTMENTS (CONTRACTOR)

TASK #	PHASE 4
1	CONSTRUCT DRAINAGE SYSTEM (CONTRACTOR)
2	FINAL TRAIL SURFACE (CONTRACTOR)
3	INSTALL R/W FENCING (EXTENDS BEYOND LIMITS SHOWN IN THIS VIEW) (CONTRACTOR)
4	INSTALL EROSION CONTROL PRODUCT & HYDROSEED EMBANKMENT (CONTRACTOR)
5	INSTALL WOODEN TRAIL FENCING (CONTRACTOR)

TASK #	PHASE 5
1	REMOVE TEMPORARY GRADE CROSSING (UPRR)
2	REMOVE TEMPORARY GATE & REPLACE WITH ROW FENCING (CONTRACTOR)

- NOTES:
- 1 UPRR FLAGGING IS REQUIRED WHEN TEMPORARY CROSSING IS IN USE AND WHEN ANY PERSON OR EQUIPMENT WILL BE WITHIN 25' OF THE TRACK, INCLUDING BRIDGE ERECTION OVER TRACKS.
  - 2 CONSTRUCTED BY OTHERS (SEPARATE PROJECT)
  - 3 (E) BRIDGE TO BE REMOVED BY OTHERS (SEPARATE PROJECT)
  - 4 (E) DRAINAGE HEADWALL PROTECT IN PLACE
  - 5 TEMPORARY CROSSING GATE SHALL BE LOCKABLE WITH ONLY THE FLAGGER AND RAILROAD TRACK MAINTAINER HAVING A KEY.

BRIDGE ERECTION NOTES:  
 PREFABRICATED STEEL TRUSS BRIDGE DELIVERED ON SITE IN TWO COMPONENTS. STRUCTURE ASSEMBLED ON THE MOUNTAIN SIDE OUTSIDE OF RAILROAD RIGHT OF WAY, LIFTED AND PLACED WITH CRANE LOCATED ON MOUNTAIN SIDE AND PLACED ON ABUTMENT SEATS.  
 \*CRITICAL PICK MAY BE REQUIRED PENDING FINAL BRIDGE WEIGHTS  
 \*\*RAILROAD FLAGGING REQUIRED DURING PLACEMENT OF THE BRIDGE.

SANTA BARBARA COUNTY  
**Trails Council**



BENGAL ENGINEERING  
 360 S. Hope Ave  
 Santa Barbara, CA

HS / MW  
 HS / LC  
 SO  
 Design  
 Drawn  
 Chkd  
 30% UPRR  
 SUBMITTAL

SANTA BARBARA  
 SUBDIVISION  
 SANTA BARBARA COUNTY, CA  
 LOCATION  
 W 119° 56' 02.7"  
 LONGITUDE  
 N 034° 26' 13.1"  
 LATITUDE

CALIFORNIA COASTAL TRAIL AT PARADISO DEL MARE  
 CONSTRUCTION PHASING PLAN

PBW. NO.  
 PH-1  
 BID NO. SHT. DES.  
 DWG. NO.  
 SHT. 12 OF 18

