



**BEFORE THE PUBLIC UTILITIES COMMISSION OF THE
STATE OF CALIFORNIA**

FILED

06/30/26

04:59 PM

R1812005

Order Instituting Rulemaking to Examine
Electric Utility De-Energization of Power
Lines in Dangerous Conditions.

Rulemaking 18-12-005

**SOUTHERN CALIFORNIA EDISON COMPANY'S (U 338-E) QUARTERLY
PROGRESS REPORT ON PUBLIC SAFETY POWER SHUTOFF ADVISORY BOARD
AND WORKING GROUPS**

CLAIRE TORCHIA

WILLIAM YU

Attorneys for

SOUTHERN CALIFORNIA EDISON COMPANY

2244 Walnut Grove Avenue

Post Office Box 800

Rosemead, California 91770

Telephone: (626) 302-1634

E-mail: William.Yu@sce.com

Dated: **June 30, 2026**

**BEFORE THE PUBLIC UTILITIES COMMISSION OF THE
STATE OF CALIFORNIA**

Order Instituting Rulemaking to Examine
Electric Utility De-Energization of Power
Lines in Dangerous Conditions.

Rulemaking 18-12-005

**SOUTHERN CALIFORNIA EDISON COMPANY’S (U 338-E) QUARTERLY
PROGRESS REPORT ON PUBLIC SAFETY POWER SHUTOFF ADVISORY BOARD
AND WORKING GROUPS**

Pursuant to guidelines set forth in Appendix A of Commission Decision 20-05-051, Southern California Edison Company (“SCE”) respectfully submits its Quarterly Progress Report on Public Safety Power Shutoff (“PSPS”) Advisory Board and Working Groups, which is attached hereto.

Respectfully submitted,

WILLIAM YU

/s/ William Yu

By: William Yu

Attorneys for
SOUTHERN CALIFORNIA EDISON COMPANY

2244 Walnut Grove Avenue
Post Office Box 800
Rosemead, California 91770
Telephone: (626) 302-1634
E-mail: William.Yu@sce.com

June 30, 2026

Attachment



Southern California Edison's Quarterly
Progress Report on PSPS Advisory Board
and PSPS Working Group – Pursuant to
Guidelines set forth in Appendix "A" of
Decision (D.) 20-05-051

Rosemead, CA
June 30, 2026

TABLE OF CONTENTS

I. Background	1
II. Advisory Board	2
1. Advisory Board Members	2
2. Advisory Board Meeting Agenda and Minutes.....	2
III. Working Group	4
1. Working Group Members	4
2. Working Group Meeting(s) Agenda and Minutes.....	4
IV. Appendix	5

Appendix A – Advisory Board/Working Group Presentation

Appendix B - PSPS Advisory Board Invitee List

Appendix C - PSPS Working Group Invitee List

I. BACKGROUND

On December 19, 2018, the California Public Utilities Commission (CPUC or Commission) opened Public Safety Power Shutoff (PSPS) Order Instituting Rulemaking (R.)18-12-005 (OIR) to examine the rules that allow electric utilities, under the Commission’s jurisdiction, to de-energize power lines in case of dangerous conditions that threaten life or property in California. On June 4, 2019, the Commission issued Decision (D.)19-05-042 (PSPS OIR Phase 1 Decision), which established the PSPS Guidelines, building on directives established in Resolution ESRB-8. On June 5, 2020, the Commission issued D.20-05-051 (PSPS OIR Phase 2 Decision) adopting updated and additional PSPS guidelines.

The PSPS OIR Phase 2 Decision required Southern California Edison Company (SCE) to convene, at least quarterly, regionalized working group meetings providing the opportunity for participation from small multi-jurisdictional electric utilities, community choice aggregators, publicly owned electric utilities, communications and water service providers, CPUC staff, tribal and local government entities, Public Safety Partners, and representatives of people/communities with access and functional needs (AFN) and vulnerable communities. These working groups provide a forum to share lessons learned between the impacted communities and the electric investor-owned utilities. Components of the de-energization protocols that could be addressed by the Working Group include the provision of Community Resources, communication strategies, information sharing, identification of critical facilities, strategies for supporting people/communities with AFN, and contingency plans. SCE is required to report back to the CPUC on the Working Group progress on a quarterly basis.

In addition, the PSPS OIR Phase 2 Decision required SCE to establish an Advisory Board to provide advisory functions regarding de-energization, consisting of Public Safety Partners, communications and water service providers, local and tribal government officials, business groups, non-profit organizations, representatives of people/communities with AFN, and academic organizations. SCE is working with this territory-wide Advisory Board to discuss best practices for de-energization issues and safety, community preparedness, regional coordination, and the optimal use of existing and emerging technologies. SCE is also required to report back to the CPUC on the Advisory Board progress on a quarterly basis.

To comply with the guidelines provided by the Commission in D.20-05-051, SCE formed the PSPS Regional Working Group Meetings and a service area-wide Advisory Board immediately following the issuance of the decision on June 5, 2020.

On February 12, 2021, SCE submitted its PSPS Corrective Action Plan to the CPUC. In SCE’s PSPS Corrective Action Plan, SCE will leverage the Working Group and Advisory Board to review progress and identify further corrective actions to update the PSPS protocols and procedures.

On June 29, 2021, the Commission issued D.21-06-034 (PSPS OIR Phase 3 Decision) adopting updated and additional PSPS guidelines. The Commission noted that “Each electric investor-owned utility must file and serve its quarterly regional working group reports in R.18-12-005 or its successor proceeding.”

This is the Q2 2026 progress report on SCE’s Advisory Board and Working Group Meetings as required by the Commission.

For the 2026 Q2, the Advisory Board and Working Group meetings were combined and offered in a hybrid in-person/virtual mode at the SCE Energy Education Center in Irwindale on June 3. This provided the opportunity for participants in the morning’s SCE PSPS full-scale Exercise and/or Showcase to meet in person. For this reason, questions, presentation materials and schedules for both groups align for this meeting.

II. ADVISORY BOARD

SCE developed an approach for establishing a wildfire safety community Advisory Board that follows the approach implemented by San Diego Gas & Electric Company. SCE’s Advisory Board addresses service area-wide de-energization and wildfire issues, providing hands-on, direct involvement and advisory functions on various aspects of PSPS de-energizations. SCE has established an Advisory Board for the entire SCE service area, with meetings scheduled quarterly.

The PSPS Advisory Board was created during the third quarter of 2020, and the first Advisory Board meeting was held on October 20, 2020. As directed by the Commission, SCE invited key stakeholders to represent SCE communities on the Advisory Board.

The schedule of the 2026 Advisory Board meetings is shown in Table 1 below:

Table 1

Q1 2026	Q2 2026	Q3 2026	Q4 2026
Tuesday, March 17 1:00 pm (virtual)	Wednesday, June 3 1:15 pm (combined with Working Group, hybrid in person/virtual)	Tuesday, August 18 1:00 pm (virtual)	Thursday, December 10 1:00 pm (virtual)

1. ADVISORY BOARD MEMBERS

SCE reached out to the following organizations, as directed in the PSPS OIR Phase 2 Decision, to request participation in the Advisory Board:

- Public Safety Partners
- Communications and water service providers
- Tribal and local government entities
- Business groups
- Nonprofit organizations
- Representatives of people/communities with AFN and vulnerable communities
- Academic organizations

2. ADVISORY BOARD MEETING AGENDA AND MINUTES

The Q2 2026 Advisory Board meeting was held in a combined meeting with the Q2 2026 Working Group on Wednesday, June 3, 2026. Stakeholders required by the Phase 2 Decision were invited; the list of invited

organizations is provided in Appendix B. The meeting was hosted by SCE’s Advisory Board Member, Tom Brady, Principal Manager, Business Resiliency.

The following topics were discussed during this meeting:

- Welcome & Safety
- Highlights from PSPS Showcase/Exercise
- SCE Weather & Wildfire Outlook
- PSPS Season Update
- Drone Overview
- Guest Presentation: 211 California Overview
- SCE System Reliability Overview
- PSPS Resource Guide
- Roundtable Q&A
- Closing Remarks

The presentation for the combined meeting is in Appendix A.

Questions and responses in Table 2 below reflect all in-event questions during the combined meeting.

Table 2

	Participant Questions/Comments	SCE Responses	Action Items
	None	N/A	N/A
1	Participant asked how they can obtain social media links/kits for PSPS communications?	SCE provided both hard copies and email versions of our Social Media PPS Kit. Furthermore, organizations can also reach out to their government relations or account managers. Hard copies were distributed at the meeting.	N/A
2	During 211 presentation, participant asked how 211 calls are directed to the correct call centers?	The 211 team clarified that calls are routed based on area code for phone calls and zip code for text messages.	N/A
3	During 211 presentation, participant asked whether customers outside high fire threat areas, but impacted by PPS, can access 211 resources?	The 211 team confirmed they use zip codes and coordinate with SCE supervisors to ensure no one is turned away, even if outside typical high fire threat areas.	N/A

III. WORKING GROUP

During the third quarter of 2020, SCE established three Working Groups to include representation from various key stakeholders as directed by the Commission. SCE formed three distinct regionalized Working Groups that collectively represent the entire SCE service area. The counties in SCE’s service area are represented in alignment with Cal OES defined regions.

The Q2 2026 Working Group/Advisory Board meeting for all regions was held on June 3rd, 2026, at 1:15pm. The 2026 Working Group meeting schedule is listed in Table 3 below:

Table 3

Working Group	Q1 2026	Q2 2026	Q3 2026	Q4 2026
Central Region (Region V)	March 12, 2026 1:00 pm	June 3, 2026 1:15 pm	August 13, 2026 1:00 pm	December 8, 2026 1:30 pm
LA Metro & Coastal Region (Region I)	March 12, 2026 9:00 am	Hybrid (In person/virtual) combined with Advisory Board	August 13, 2026 9:00 am	December 8, 2026 9:00 am
Inland Empire & Northern Region (Region VI)	March 12, 2026 1:00 pm		August 13, 2026 1:00 pm	December 8, 2026 1:30 pm

1. WORKING GROUP MEMBERS

SCE currently has representation from the following stakeholders for each of the three regional Working Groups:

- Small multi-jurisdictional electric utilities
- Community Choice Aggregators (CCAs)
- Publicly owned electric utilities
- Communications and water service providers
- Tribal and local government entities
- Public Safety Partners
- Representatives of people/communities with AFN and vulnerable communities
- Transmission-Impacted Publicly Owned Utilities
- Electric Cooperatives
- Commission staff
- Cal OES representatives
- Others (e.g., Healthcare facilities)

The list of invited organizations is provided in Appendix C of this document.

2. WORKING GROUP MEETING(S) AGENDA AND MINUTES

SCE’s Q1 2026 Working Group meetings were hosted virtually via Microsoft Teams. The agenda included:

- Welcome & Safety
- Highlights from PSPS Showcase/Exercise
- SCE Weather & Wildfire Outlook
- PSPS Season Update
- Drone Overview
- Guest Presentation: 211 California Overview
- SCE System Reliability Overview
- PSPS Resource Guide
- Roundtable Q&A
- Closing Remarks

The presentation for the Working Group and Advisory Board combined hybrid meeting is included in Appendix A of this document.

The Q2 PSPS Working Group-Advisory Board + Resiliency Workshop was held in person and virtually (a hybrid all-region meeting) on Wednesday, June 3rd at 1:15pm. Table 4 below lists pre-submitted questions that SCE responded to during this meeting. In-event questions and responses are listed in Table 2.

Table 4

	Questions	SCE Response	Action Items
1	PSPS Decision Criteria (Pre-Submitted Question) What criteria are used during the PSPS decision-making process?	This was covered during the presentation and hard copies of SCE’s Decision-making Guide was distributed at the meeting. Additionally, the organization received an email copy of the Guide.	N/A
2	Brochures/Infographics (Pre-Submitted Question) What publicly available PSPS brochures and infographics can be shared with communities?	All fact sheets shared with partners can be shared publicly. All publicly available factsheets are indexed and available on the Energized by Edison website.	N/A

IV. APPENDIX

- A. Advisory Board/Working Group Presentation
- B. Advisory Board Invitee List
- C. Working Groups Invitee List

Appendix A

Advisory Board/Working Group Presentation (same presentation is used for all regions)



**OUR
COMMITMENT
TO CALIFORNIA
KEEPING OUR
COMMUNITIES SAFE**

Q2 PSPS WORKING
GROUP / ADVISORY
BOARD + RESILIENCY
WORKSHOP

JUNE 3, 2026



WELCOME

Tom Brady
Principal Manager
Wildfire/PSPS Response
Business Resiliency



SAFETY – ROOM EVACUATION INFORMATION

GATEWAY BUSINESS CENTER – IRWINDALE, CA
ASSEMBLY AREA MAP

As of 3/27/23 - Map not to scale

Note: Not all suites have their own AED, EAP, or First Aid Kit. Smaller occupancy and/or interconnected suites can use the items nearest to them.

EVACUATION MAP FOR EMERGENCY CALL 911

Call 911: Haig Kartounian

First Responders: Shruti Amin

AED: Rosa Perea

CPR: Cameron Griffin

Call ESOC: Mary Ann Larrieu

LEGEND

- Emergency Action Plan (EAP)
- First Aid Kit
- AED
- Evacuation Paths
- Assembly Area

Safety: Heat Illness Prevention

Prevent heat illnesses by protecting yourself and proactively addressing hydration

Hydrate Frequently

Frequently drinking small quantities of water is key. During hot weather, you should drink four, 8-ounce cups of water per hour.

Avoid Dehydrators

Be mindful of caffeinated beverages, energy drinks, and medications that can contribute to dehydration.

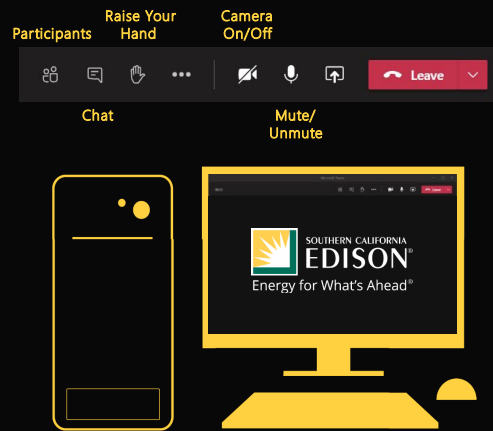
Take Frequent Breaks

Find ways to cool down. Use fans, take cool showers, limit outdoor activities during peak heat hours 10am to 4pm. If outdoors, seek shaded areas, use cooling towels, hats for sun protection.



HOUSEKEEPING

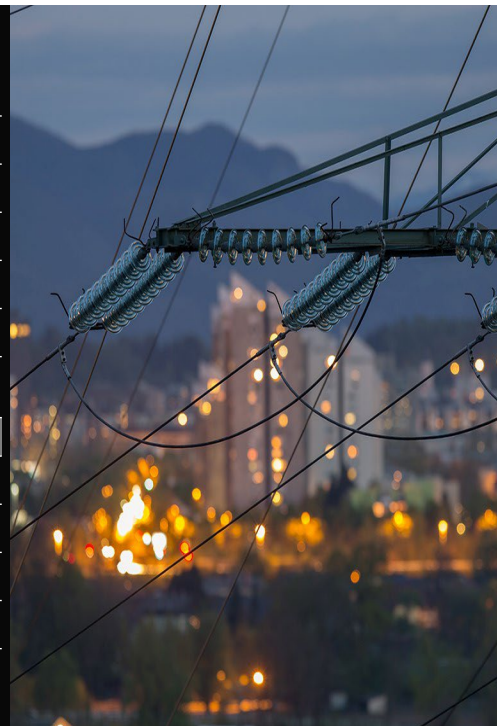
- Meeting will be **recorded**
- As required, **attendee names will be documented and may be disclosed to the CPUC or other government entities** requiring information related to this meeting
- Use the **Raise your hand** or **Chat** feature located on your screen if you have a question
- Turn on your **camera** if you feel comfortable
- You'll be announced when it's your time to ask your question; remember to mute/unmute yourself
- If you have any issues with using Teams, email us at SCEBCDCustomerSupport@sce.com



Energy for What's Ahead®

MEETING AGENDA

TOPIC	PRESENTER	DURATION
Welcome & Safety	Tom Brady	5 minutes
Highlights from PSPS Showcase/Exercise	Jude Schneider	10 minutes
SCE Weather & Wildfire Outlook	Tom Rolinski	10 minutes
PSPS Season Update	Jude Schneider	15 minutes
Drone Overview	Rob Ford	10 minutes
211 California Overview	Jennifer Ocampo and Linda Wingert	15 minutes
Resiliency Workshop		
SCE System Reliability Overview	Ruben Soto	15 minutes
PSPS Resource Guide	Haig Kartounian	10 minutes
Q&A	Haig Kartounian	15 minutes
Closing Remarks	Lori Blackwell	5 minutes



PSPS EXERCISE OVERVIEW

Jude Schneider

Senior Advisor
Wildfire/PSPS Response
Business Resiliency



SHOWCASE FOCUS AREAS



Public Safety Partner Collaboration

Interagency Coordination
& Mutual Assistance



Operational Execution

PSPS Planning
& Field Operations



Communication Workflow

Alerts & Notification
Processes



Community Resilience

Customer Support
& Resources



EOC Tour

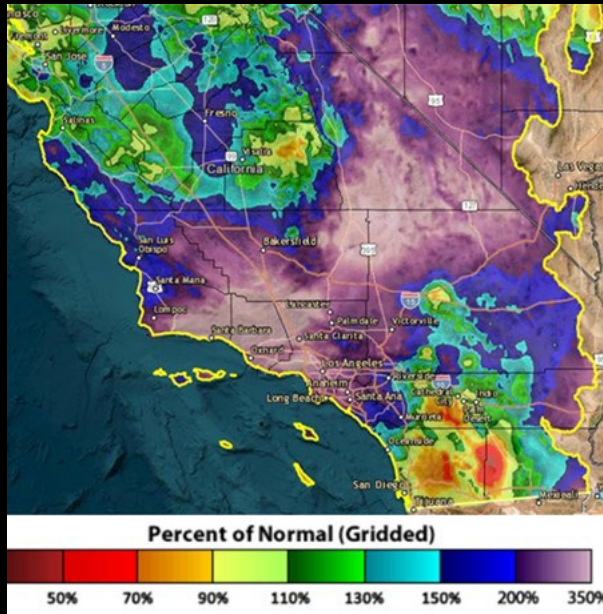
Situational Assessment Center

2026 WEATHER & WILDFIRE OUTLOOK

Tom Rolinski
Fire Science Expert
Meteorology



WHAT HAPPENED LAST YEAR



Early rain in the fall led to early green-up

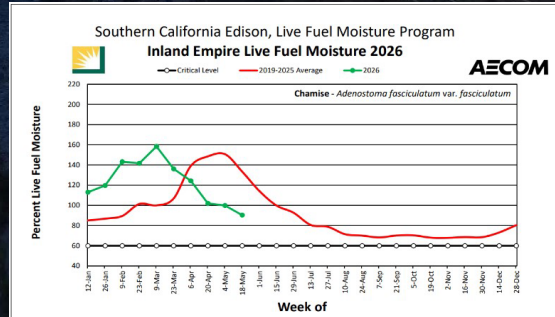
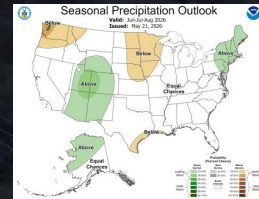
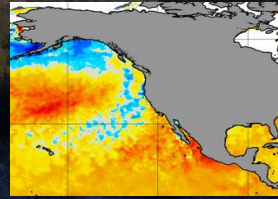
Fewer wind events occurred in the fall

Heavy rains in November and December ended fire season

2026 WEATHER AND WILDFIRE FORECAST

Weather, Fuels, & Fire Potential Highlights

- Southern California saw a large increase in fire activity in May which reflects how dry and receptive the vegetation is becoming.
- Moisture levels in the live vegetation are at levels more typical of late June or early July.
- Fire activity will continue to increase throughout the region with larger, multi-thousand acre fires becoming more common.
- This summer is expected to be hotter than normal with the potential for a more active thunderstorm season across the mountains and deserts.
- The greatest threat for large fires will be across the inland valleys and nearby foothills in June, expanding to include most of the service territory in July and August.
- There will be increasing chances for PSPS activations during windy periods moving forward.



9

PSPS EXERCISE OVERVIEW

Jude Schneider

Senior Advisor
Wildfire/PSPS Response
Business Resiliency



DECISION-MAKING: FIRE POTENTIAL INDEX (FPI)

Baseline Criteria

Established before or during the active PSPS season

Uses historic and pre-determined data

- Wind speed history
 - 99th percentile
- Bare wire
 - 31 mph /46 mph
- Covered conductor
 - 40 mph/58 mph
- Outage informed
 - 18-27 mph (2 circuits)

Wind Threshold

The threshold at which a forecast windspeed triggers a PSPS event

Uses circuit specific factors

- Forecast peak FPI
- Circuit health factors
- Fire risk severity
- Consequences

Wind Trigger

Circuits will be de-energized as they meet or approach these values

Uses event specific factors

- Urban conflagration potential
- Fire suppression levels
- Event size & complexity
- National Weather Service declarations (i.e., Particularly Dangerous Situation-PDS)

12

OUTAGE TYPES

	Is it PSPS?	Is it Repair?	Is it Maintenance?
Notifications	First notification 1-3 days before planned shut off/ mentions <u>high winds and fire conditions</u>	First notification is typically up to 10 minutes after shutoff / lets customers know <u>SCE is responding</u>	First notification up to 10 days before shut off / mentions <u>need for repairs</u>
Mandatory notifications?	YES Emergency communications	NO Customers must sign up	NO Customers must sign up
Average Length	23 hours, but can be longer	Depends on complexity: often same day restoration	Typically, less than 5 hours

13

DRONES, DOCKS AND AI

The State of Remote Sensing and UAS at SCE 2026

Rob Ford

Senior Manager - Remote Sensing & UAS
Aircraft Operations - TSD
Operational Services



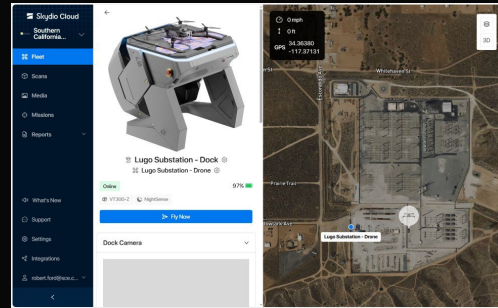
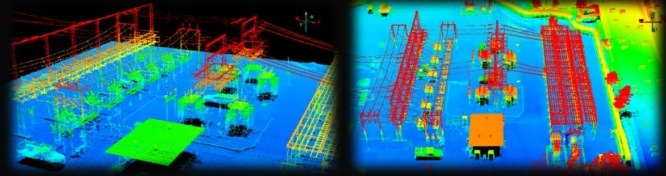
Progress in 2025

- NDAA compliance achieved
 - Parrot Anafi fleet removed
 - Skydio X-10s trained and deployed
 - Enhanced abilities for OUs performing inspections
 - Obstacle avoidance, zoom, radiometric thermal, flight time, tracking, etc.
 - Vendor compliance achieved
 - No more DJI/Covered Entity equipment permitted or needed
- LiDAR Drone tested and procured
 - Ranch Palos Verdes - Land movement, water table test, fault line test
 - Substation - Capture for Grid Digitalization Proof Of Concept (POC)
- Docks
 - 5 procured
 - 2 deployed - Lugo and Dagget
 - POCs tested and in progress - IT & Security so far
- Night Training
 - Developed
 - Deployed to 12 pilots
 - Goal of improved restoration times, lower dependency on crewed aircraft, enhanced safety



Planned for 2026

- LIDAR Drone
 - Business Resiliency – Additional support options
 - Substation Construction & Maintenance
 - Rights-of-way
 - More use cases to be tested
- Docks
 - 3 to be deployed – Pardee, Filmore, Catalina
 - Planned testing with Distribution Operations Center for enhanced situational awareness
 - 1 to be re-deployed – Location TBD
- BVLOS training for remote pilot in field
 - Developed & Deployed
 - First class Jan 14 – 6 Troubleman trained
- PSPS Drone usage
 - Simulation scheduled to complete by end of January
- Drones for interior & confined spaces
- Long Range Fixed Wing/VTOL drones
- Program updates and enhancements based on audit feedback



16

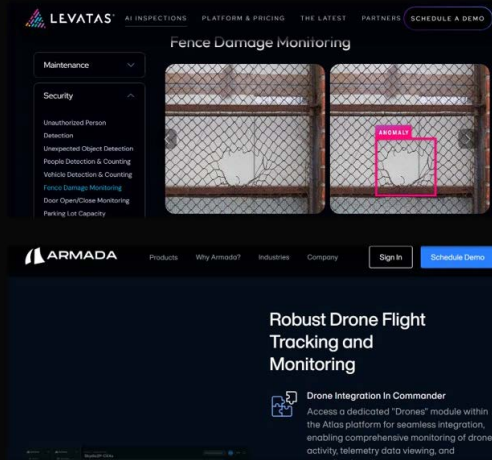
Known Unknowns for 2026

- Part 108 & Part 146 – Pathway to Autonomous BVLOS
 - Notice of Proposed Rule Making(NPRM) issued in August 2025
 - SCE Led the EEI response and recommendations across IOUs
 - FAA given 240 days to finalize the rule targeting February 1, 2026
 - Drones up to 1,320 pounds
 - Two Tier Authorizations
 - Permitted – Simpler and smaller operations
 - Certificated – Larger and more complex operations
 - New Roles – Operations Supervisors & flight Coordinators
 - Shift Limits of 14 hrs & 10 hrs mandatory rest
 - Technical Requirements – Detect & Avoid
 - UTM – Uncrewed Traffic Mangement
 - ADSPs- Automated Data Service Providers
 - Part 2209 – Protect critical infrastructure from drone activity
 - Started in 2016
 - Delayed until New Jersey incidents occurred in late 2024 and early 2025 leading to 22 TFRs across the state and into New York
 - In late 2025 was moving through committee
 - Anticipated NPRM to be issued in Q1 2026
 - Formal process for designating "fixed site" facilities where drone flights are prohibited or restricted.
 - Eligible "Fixed Site" Facilities:
 - **Energy Infrastructure:** Power plants, transmission facilities, and distribution equipment.
 - **Refineries and Chemical Plants:** Oil refineries and chemical manufacturing sites.
 - **Amusement Parks:** Large-scale entertainment venues.
 - **Prisons:** State and federal correctional facilities (added explicitly in the 2024 Reauthorization).
 - **Other Critical Sites:** Railroads, government facilities, and locations deemed vital to national security.
- FCC block on new foreign manufactured drones will not hurt current efforts. Potential cost increases if there are shortages due to this. Long term chances of increased competition in US will improve affordability and technical capabilities available

17

Drones & AI – SCE History

- VICO inspections developed AI/ML tools to perform secondary review of images in 2019
 - Currently 30+ million images reviewed since 2022 in GR Viewer.
 - Approx. 5,000 images with tags and annotations (trained AI)
 - Nearly 150k images with AI/ML inferences (self trained AI/ML)
- Security - POC with Levitas at Lugo Substation is ongoing.
 - Security patrols include but are not limited to:
 - Unauthorized Person Detection
 - Unexpected Object Detection
 - People Detection & Counting
 - Vehicle Detection & Counting
 - Fence Damage Monitoring
 - Door Open/Close Monitoring
 - Parking Lot Capacity Awareness
 - Weapon status & detection
 - Lock and shackle status
- IT – Digital Process Transformation – Emerging Technologies
 - Testing of Armada AI to review live feed video and assess for issues - ongoing



18

211 California Overview

Jennifer Ocampo

Senior Advisor
PSPS Customer Experience





NATIONAL ACCESS & FUNCTIONAL NEEDS (AFN)
SYMPOSIUM

INCLUSIVE INNOVATIVE COLLABORATIVE WHOLE COMMUNITY

Inclusive. Innovative. Collaborative. Whole Community.

JULY 7-8, 2026
9:00 AM - 12:00 PM (PST)

VIRTUAL EVENT

Cal OES
GOVERNOR'S OFFICE OF EMERGENCY SERVICES

NYU

IAEM
International Association of Emergency Managers

COLORADO
Division of Homeland Security & Emergency Management
Department of Public Safety



Register here:

20

211 Public Safety Power Shutoff Preparedness & Outage Support Program

Linda Wingert, 211 California
 Laura Krolikowski, Interface Children & Family Services
 Amy Castro, 211 LA

May 2026

2-1-1

211 maintains a comprehensive database of community resources and provides information and referrals for essential needs like:

211 also can connect people with information and referrals for:



2.1.1

Live Support by Phone & Text

One-on-one information and referral support that is:



- Free to callers
- Provided by local CBOs
- Comprehensive: all human services
- Confidential
- Available 24 hours/day, 7 days a week
- Available in 240+ languages
- Trusted, reliable connection point

Help Online



HOME ABOUT US STAY INFORMED SERVICE PROVIDERS CONTACT US CALL 211

Search by Category



Housing & Homeless Services



Income & Expenses



Food



Crisis Services



Transportation



Health Care



Mental Health & Substance Use Disorders



Utilities



Education



Legal Assistance



Post Incarceration Reentry Services



Children & Family



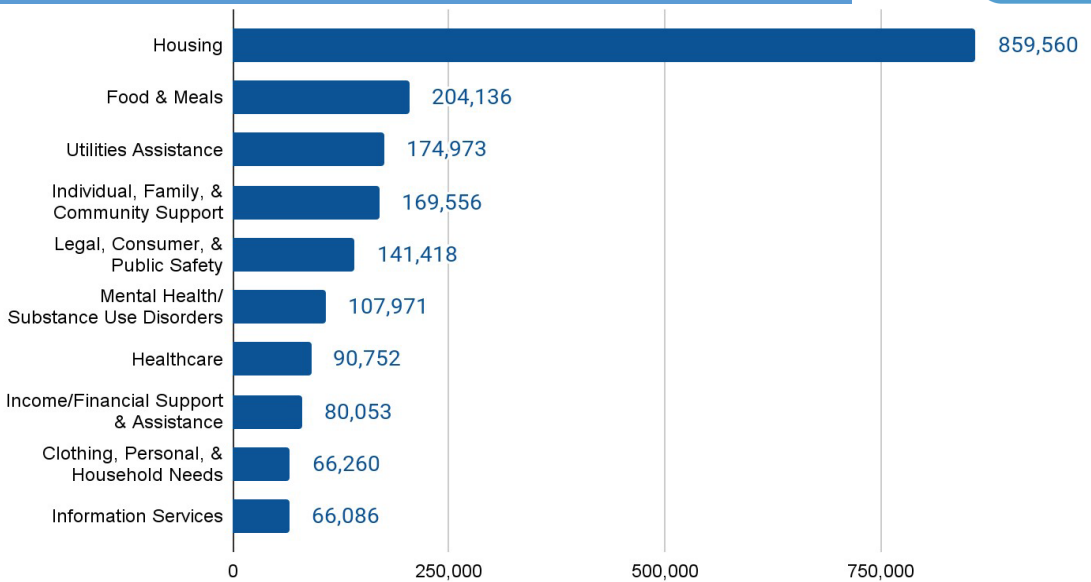
Youth Services



Seniors

- Find resource information online on local 211 websites or 211ca.org
- Resources updated regularly by Community Resource Database Specialists
- + 4 million searches/year

2025 211 Caller Needs - Top 10



211 Coverage



- 14 Contact Centers
- 25 Local CBO Network Members
- 800+ team members
- 98% of CA residents are covered by 211
- 211 Enabled/No Service Counties have IVR messaging for PSPS
- Goal is full statewide coverage



PSPS Program Partnership



Emergencies and safety power outages can happen at any time. SCE and 211 CA have partnered to help customers prepare, get support and stay safe.

- ❖ Find ADA-accessible rides, hotel stays and food during power outages.
- ❖ Explore backup power options and available programs.
- ❖ Create an emergency plan.
- ❖ Get support during or after a power outage or emergency.
- ❖ Sign up for bill payment assistance.

To learn more, customers can call **211**, text 'PSPS' or 'PREPARE' to **211-211** or visit 211now.com



PSPS Program Qualifications

2.1.1

Households are eligible for 211 PSPS Program if:

- SCE residential customer
- Living in High Fire Threat Area
- One or more members of the household have an Access or Functional Need (AFN)

AFN includes individuals with the following conditions:


- ❖ Developmental or intellectual disabilities
- ❖ Physical disabilities
- ❖ Injuries
- ❖ Limited English proficiency or non-English speaking
- ❖ Older adults
- ❖ Children
- ❖ People living in institutionalized settings
- ❖ Low income
- ❖ Homeless
- ❖ Transportation disadvantaged, including those dependent on public transit
- ❖ Pregnant

Before PSPS/During Blue Skies

2.1.1

Power Outage Safety Planning & Care Coordination

 <p>Identify utility customers with electricity-dependent household members or AFN</p>	 <p>Review and Document household's unique needs</p>	 <p>Connect customers to appropriate resources and local programs</p>	 <p>Co-create a personalized household safety plan and send to customer's home</p>	 <p>Assist applications for eligible utility programs</p>
--	--	---	--	---

 **Ongoing Check Ins:** Outreach to households to assess new needs, changes to household members and medical situations, resources connection status, & preparedness

Thank you

Linda Wingert, 211 California - linda@ca211.org

Laura Krolkowski, ICFS - l.krolkowski@icfs.org

Amy Castro, 211 LA - amy.castro@211la.org

2.1.1

SCE System Reliability

Ruben Soto

Senior Advisor
System Planning & Engineering



What is Reliability?

Simply put, reliability is -

Having dependable electricity when you need it

Outages can be broken down by -

1. Maintenance outages (aka planned outages)
2. Repair outages (aka unplanned outages)
3. Public Safety Power Shutoff (aka PSPS)



Public Safety Power Shutoff (PSPS): An operational protocol that SCE implements under extreme weather conditions in order to minimize the threat of wildfires and keep communities safe from potentially dangerous situations.

33

How Do We Measure System Reliability?

SAIDI

=

Total minutes every SCE customer was without power due to sustained outages (CMI)

÷

Total number of customers

System Average Interruption Duration Index

“What was the average amount of time that the system’s power service experience unexpected interruptions in any given period?”

SAIFI

=

Number of sustained customer outages experienced by all SCE customers (CI)

÷

Total number of customers

System Average Interruption Frequency Index

“How many times on average did the system’s power service have unexpected interruptions in any given period?”

MAIFI

=

Number of momentary customer outages experienced by all SCE customers (MI)

÷

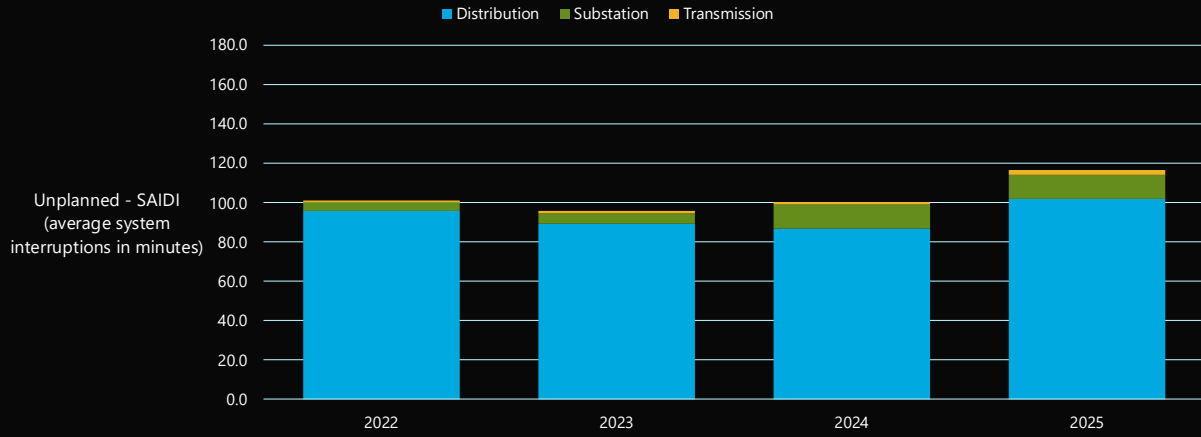
Total number of customers

Momentary Average Interruption Frequency Index

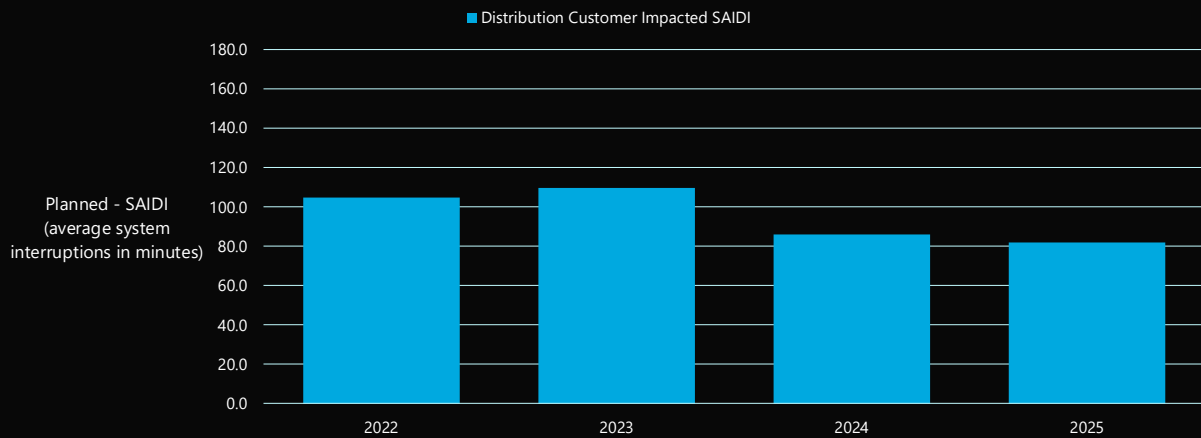
“How many times will my power service be momentarily interrupted (≤ 5 minutes) this year?”

34

2022 - 2025 System Reliability History – Unplanned



2022 - 2025 System Reliability History – Planned



How Can I Get Reliability Information?

- Local Reliability Reports can be found at [Outage Reliability Reports-Outages & Safety-SCE](#)
- There are Reliability Presentations available for every city, county supervisorial district, and tribe in SCE's service area
- These reports are updated annually
- Reliability reports include the following information:
 - Listing and map of circuits serving that jurisdiction
 - Circuit reliability performance
 - Causes of repair outages on those circuits
 - Capital Improvement Plans on those circuits
 - Historical SAIDI/SAIFI for circuits

Reliability Reports

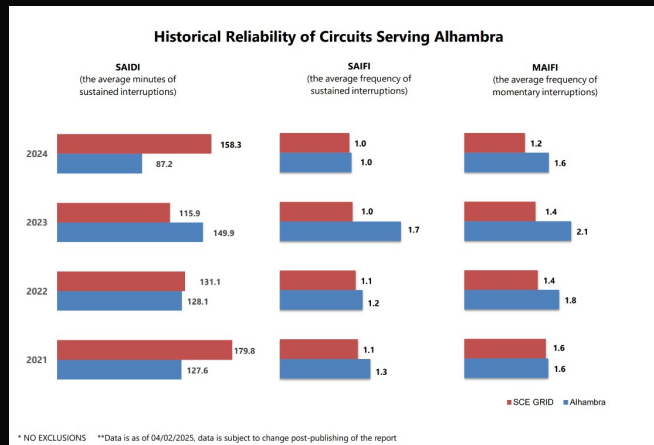
- Each report will list all circuits that serve that jurisdiction as well as the number of customers on each of those circuits
- Provides reliability history for the current year and the prior 3 years
 - SAIDI
 - SAIFI
 - MAIFI

Overview of Alhambra

There are 42 circuits that serve Alhambra

Note: The number of customers listed represents the total number of customers on each circuit (not the total jurisdiction)

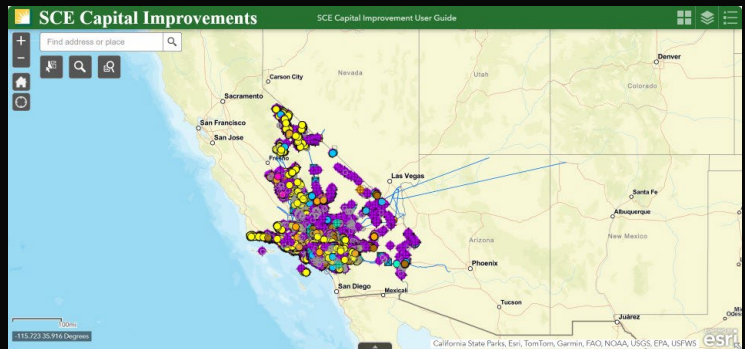
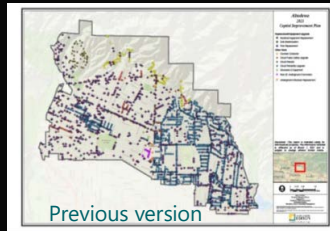
Circuit Type	Customers	Circuit Type	Customers	Circuit Type	Customers	Circuit Type	Customers
ALHAMBRA(16KV)	2,255	FEELSTRA(16KV)	955				
ASTERIOD(16KV)	4,451	ROANOK(16KV)	379				
BILTON(16KV)	3,300	SARAH(16KV)	704				
BRIAN(16KV)	2,248	SHOBAN(16KV)	1,029				
BRUNN(16KV)	872	ST CHARLES(16KV)	1,253				
CHOCOMA(16KV)	879	STOR(16KV)	582				
COMANQUE(16KV)	366	TANNING(16KV)	3,680				
CORONAL(16KV)	230	TEST(16KV)	3,383				
CRESTA(16KV)	3,154	TRICITY(16KV)	3,214				
DEERFIELD(16KV)	2,771	TRUMP(16KV)	1,626				
DOLGELIE(16KV)	302	WALMAR(16KV)	956				
EUGEN(16KV)	384	WOODWARD(16KV)	398				
FLORAL(16KV)	2,110						
GERONA(16KV)	3,106						
GLENDALE(16KV)	700						
GRAVISE(16KV)	339						
GUEST(16KV)	696						
HAMPTON(16KV)	511						
HELMANN(16KV)	622						
HOLGUS(16KV)	408						
HONOR(16KV)	2,342						
HOOVER(16KV)	280						
KAY(16KV)	2,364						
MARINCO(16KV)	189						
MARSHFIELD(16KV)	1,583						
MAYFAIR(16KV)	776						
MERCER(16KV)	3,905						
MICHOE(16KV)	888						
PALMAY(16KV)	1,965						
PHITTS(16KV)	2,956						
Grand Total	64,561						



Capital Improvement Map

The capital improvement map has transitioned to a virtual format via [SCE Capital Improvements](#) and can be accessed using the link provided or sce.com/CapitalImprovements.

- The map highlighting capital improvement work being performed on the circuits (includes Transmission work, if applicable)
 - Pole replacement
 - Circuit rebuild
 - Electrical equipment replacement



41

PSPS Resource Guide

Haig Kartounian
Senior Advisor
Local Public Affairs



42

PSPS Resource Guide

A comprehensive toolkit for local and tribal governments to prepare for, respond to and mitigate the impact of PSPS, specifically designed to help agencies identify and support vulnerable populations.

- **Identifying AFN Populations**
 - Provides strategies and tools for locating and assisting individuals with access and function needs (AFN) while encouraging collaboration with local stakeholders to ensure these group receive timely updates and resources.
- **Multi-Channel Communications**
 - SCE uses phone, text, email, social media and address-level alerts to notify customers and public safety partners about PSPS events, with notifications beginning up to three days in advance.
- **CRCs & CCVs**
 - Partnership opportunities are available to provide accessible locations for residents to receive information, water, snacks, device charging and other support during PSPS events.



43

Resources & Tools for Local and Tribal Governments

Direct Support and Communication:

- **Emergency Contacts:** Dedicated hotlines and email addresses are provided for first responders, emergency managers, government officials and AFN issues during PSPS activations.
- **Public Safety Partner Portal:** A secure portal offers real-time circuit maps, outage boundaries and lists of impacted medical baseline and critical infrastructure customers.

Additional Resources:

- **Customer Programs and Support:** The guide lists backup power solutions, rebates, battery programs, generator safety tips and medical equipment contingency planning.
 - Free 211 support services connect AFN customers to emergency resources.
- **Reporting and Planning Tools:** Annual reliability reports, maintenance outage dashboards and post-event reports help governments track PSPS impacts and plan mitigation efforts.

44

Q&A

Haig Kartounian

Senior Advisor
Local Public Affairs



45

CLOSING REMARKS

Lori Blackwell

Principal Manager
Outage & PSPS



HELPFUL INFORMATION & RESOURCES

SCE Wildfire Webpage – [sce.com/wildfire](https://www.sce.com/wildfire)
PSPS Webpage – [sce.com/psps](https://www.sce.com/psps)

SCE Notifications

- Sign up for PSPS alerts – [sce.com/pspsalerts](https://www.sce.com/pspsalerts)
- Sign up for the Energized by Edison Wildfire Mitigation Newsletter – energized.edison.com/newsletter

Situational Awareness

- SCE outage map – [sce.com/outagemap](https://www.sce.com/outagemap)
- PSPS information – [sce.com/psps](https://www.sce.com/psps)
- PSPS decision making – [sce.com/pspsdecisionmaking](https://www.sce.com/pspsdecisionmaking)
- Role of weather in PSPS – [sce.com/fireweather](https://www.sce.com/fireweather)
- Weather awareness for PSPS – [sce.com/wildfire/weather-awareness](https://www.sce.com/wildfire/weather-awareness)
- Weather & fire detection map – [sce.com/wildfire/situational-awareness](https://www.sce.com/wildfire/situational-awareness)
- Wildfire cameras – alertcalifornia.org
- Weather stations – [sce.com/weatherstations](https://www.sce.com/weatherstations)
- CPUC high fire threat district maps – ia.cpuc.ca.gov/firemap/

Preparedness

- SCE emergency preparedness – [sce.com/safety/family/emergency-tips](https://www.sce.com/safety/family/emergency-tips)
- CAL FIRE preparedness – readyforwildfire.org

Vegetation Management

- Vegetation Management – [sce.com/safety/power-lines](https://www.sce.com/safety/power-lines); contact 1-800-655-4555 or safetrees@sce.com

Targeted Undergrounding

- Targeted Undergrounding – [sce.com/tug](https://www.sce.com/tug); contact 1-888-331-0010 or SCEprojects@sce.com

Customer Programs & Rebates

- SCE Customer Programs & Resources – [sce.com/customerresources](https://www.sce.com/customerresources)
- SCE Marketplace (rebates and programs) – marketplace.sce.com
- SCE Critical Care Backup Battery Program – [sce.com/cbbb](https://www.sce.com/cbbb)
- SCE Access & Functional Needs Resources – [sce.com/afn](https://www.sce.com/afn)
- SCE Medical Baseline Program – [sce.com/medicalbaseline](https://www.sce.com/medicalbaseline)
- Self Generation Incentive Program (SGIP) – [sce.com/sgip](https://www.sce.com/sgip) or selfgenca.com
- SCE Customer Support: 1-800-655-4555

Community Meetings

- Join SCE's wildfire safety community meetings – [sce.com/wildfiresafetymeetings](https://www.sce.com/wildfiresafetymeetings)

Energized by Edison

- Stories and videos on SCE's wildfire safety efforts – edison.com/wildfire-safety
- Corrections to recent articles & online content – edison.com/edison-for-the-record

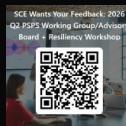
REMINDERS

Remainder of our 2026 Meetings

- **2026 PSPS Working Group Meetings** (dates subject to change)
 - **3rd Quarter – Working Group (virtual)**
 - August 13th 9am – LA Metro & Coastal Region
 - August 13th 1:30pm – Central Region – AND – Inland Empire & Northern Region
 - **4th Quarter – Working Group + Resiliency Workshop (virtual)**
 - December 8th 9am – LA Metro & Coastal Region
 - December 8th 1pm – Central Region – AND – Inland Empire & Northern Region

Report summarizing today's meeting will be provided once it is finalized including a copy of today's deck

Survey & Questions - Please complete our [survey link](#) **QR Code:**



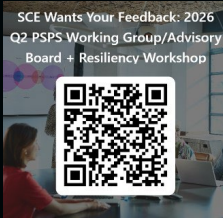
If you have any questions, email us at SCECSCustomerSupport@sce.com

Thank you for your participation!



THANK YOU

**Please don't forget
to fill out our brief survey.**



Appendix C
PSPS Advisory Board Invitee List

PSPS Advisory Board Invitee List

Advisory Board
<ul style="list-style-type: none">• Academic Organization: Desert Research Institute, San Jose State University• AFN: State Council on Developmental Disabilities• Business Group: Association of California Water Agencies, California Large Energy Consumers Association (CLECA), California Manufacturers & Technology Association (CMTA), Southern California Public Power Authority• CCA: California Community Choice Association, Clean Power Alliance of Southern California• Communication Provider: AT&T, Cox Communications, T-Mobile, Crown Castle, Frontier Communications (2 invited), Verizon• Healthcare/Hospital: Northern Inyo Health, Hospital Association of Southern California• Local Government: California State Association of Counties, League of California Cities, Southern California Association of Governments• Non-Profits: 211, Red Cross Central, Salvation Army, CUEA, United Way• Public Safety Partner: Fresno County Emergency Manager, Fresno Fire Department, Fresno Law Enforcement, Inyo County Emergency Manager, Inyo Fire Department, Inyo Law Enforcement, Kern County Emergency Manager, Kern Fire Department, Kern Law Enforcement, Los Angeles County Emergency Manager, Los Angeles Fire Department, Los Angeles Law Enforcement, Mono County Emergency Manager, Mono Fire Department, Mono Law Enforcement, Orange County Emergency Manager, Riverside County Emergency Manager, San Bernardino County Emergency Manager, San Bernardino Fire Department, San Bernardino Law Enforcement, Santa Barbara County Emergency Manager, Tulare County Emergency Manager, Tulare Fire Department, Tulare Law Enforcement, Tuolumne County Emergency Manager, Tuolumne Fire Department, Tuolumne Law Enforcement, Ventura County Emergency Manager, Ventura Fire Department, Ventura Law Enforcement• Tribal Government: Soboba Band of Luiseno Indians• Water Entity: Las Virgenes Municipal Water District, Santa Clarita Valley Water Agency, Eastern Municipal Water District, Inland Empire Utility Agency, Irvine Ranch Water District

Appendix D
PSPS Working Group Invitee List

PSPS Working Group Invitee List

Central Region V	LA Metro & Coastal County Region I	Inland Empire & Northern County Region VI
<ul style="list-style-type: none"> • AFN: Community Action Partnership of Kern (211); Independent Living Center of Kern County • Communications Provider: Charter Communications; Comcast • Healthcare: California Association of Health Facilities • Local Government: City of Tehachapi • Public Safety Partner: Kern County Emergency Services Management; Madera County Emergency Services Management • Tribal Government: Tule River Tribal Council • Water Entity: Bear Valley Community Services District; Golden Hills Community Services District • Other: California Public Utilities Commission 	<ul style="list-style-type: none"> • AFN: 211 - Orange County; 211 - Interface Children & Family Services; Service Center for Independent Life LA; Independent Living Resource Center Santa Barbara • CCA: Cal Choice; Clean Power Alliance of Southern California • Communications Provider: AT&T; Cox; Frontier Communications; Crown Castle; Verizon • Healthcare: Community Memorial Hospital; Kaiser Permanente; Santa Barbara Cottage Hospital • Local Government: City of Santa Barbara; City of Camarillo; City of Goleta; City of Irvine; City of La Canada Flintridge; City of Malibu; City of Moorpark; City of Santa Clarita; City of Simi Valley; City of Thousand Oaks • Public Safety Partner: Central Ventura County Fire Safe Council; City of Newport Beach Fire Department; Montecito Fire Protection District; Orange County Fire Authority; Orange County Sheriff's Department; Topanga Coalition Emergency Preparedness; City of Santa Barbara Fire/OES; City of Fillmore Fire Department; Laguna Beach Fire Department; City of Irvine Police Department • Publicly Owned Utility: City of Anaheim; Los Angeles Public Works • Transportation: Southern California Regional Rail Authority • Water Entity: California Water Services Co.; El Capitan Mutual Water Company; Metropolitan Water District; Moulton Nigel Water District • Other: Amgen; California Public Utilities Commission 	<ul style="list-style-type: none"> • AFN: Community Access Center; Interface Children and Family Services (211 for Mono/Inyo); Rolling Start, Inc. • CCA: Desert Community Energy; Western Community Energy • Communications Provider: T-Mobile • Healthcare: California Hospice and Palliative Care Association • Local Government: City of Mammoth Lakes; City of Corona • Public Safety Partner: Idyllwild Fire Protection District; Inyo County Emergency Services Management; Mtn Rim Fire Safe Council; Pine Cove Property Owners Association; San Bernardino County Fire Office of Emergency Services; San Bernardino County Sheriff's Department; San Bernardino County VOAD/COAD • Publicly Owned Utility: Anza Electric Cooperative; Bear Valley Electric Service, Inc.; Western Community Energy (WRCOG); Pechanga Western Electric; Riverside Public Utility • Tribal Government: 29 Palms Band of Mission Indians; Agua Caliente Band of Cahuilla Indians; Bishop Paiute Tribe; Bridgeport Indian Colony; Morongo Band of Mission Indians; San Manuel Band of Mission Indians; Soboba Band of Luiseno Indians; Tule River Tribe; Utu Gwaitu Tribe of the Benton Reservation • Water Entity: Desert Hot Springs/Mission Springs Municipal Water District; Eastern Municipal Water District; Western Municipal Water District; Mammoth Community Water District, Rancho CA Water District • Other: Desert Hills Premium Outlet/CABAZON; California Public Utilities Commission