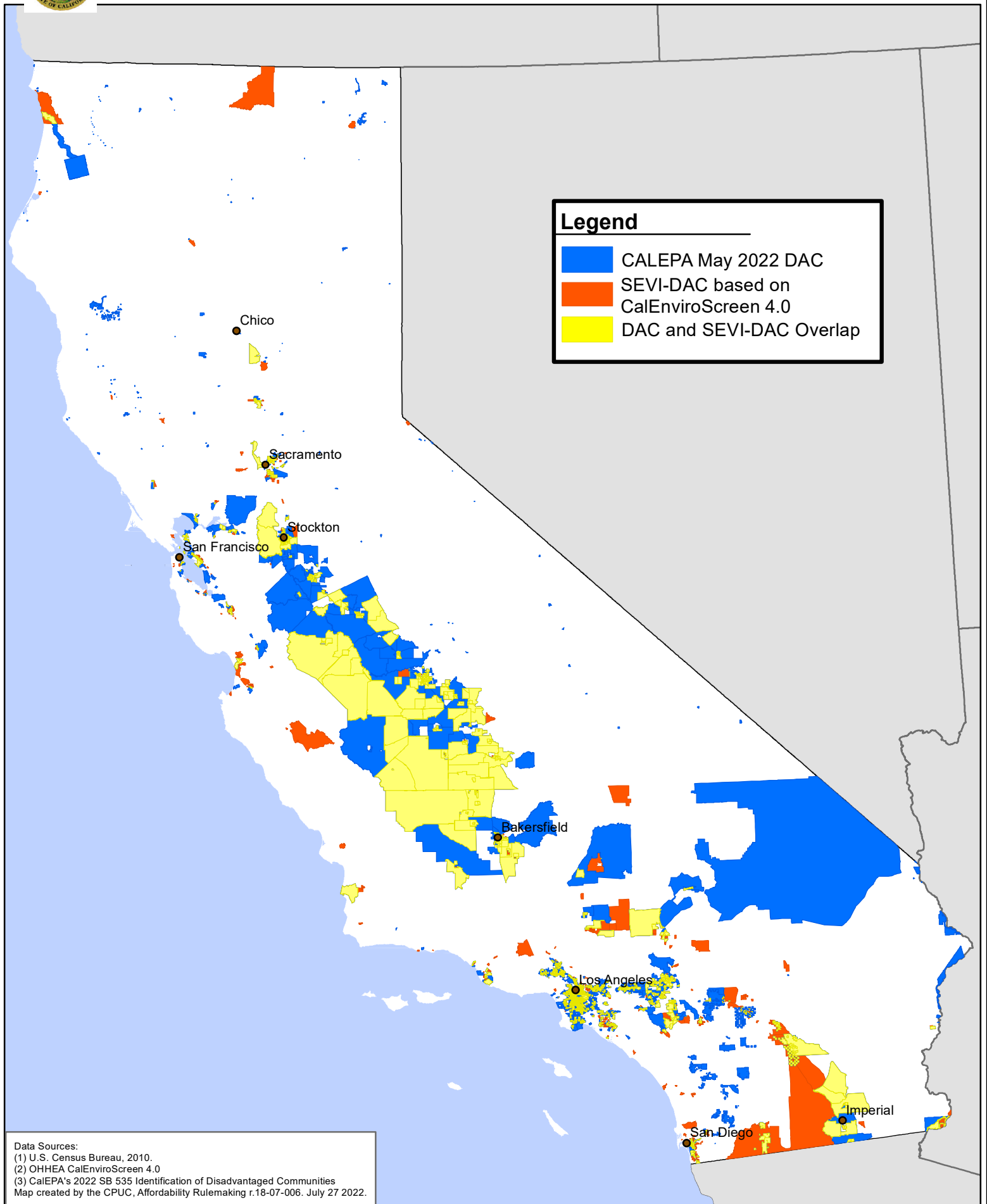


# **APPENDIX D**

## **Updated Comparison of Vulnerable Communities**



# SEVI-DAC vs DAC Comparison



**Legend**

- Blue: CALEPA May 2022 DAC
- Orange: SEVI-DAC based on CalEnviroScreen 4.0
- Yellow: DAC and SEVI-DAC Overlap

Data Sources:  
(1) U.S. Census Bureau, 2010.  
(2) OHHEA CalEnviroScreen 4.0  
(3) CalEPA's 2022 SB 535 Identification of Disadvantaged Communities  
Map created by the CPUC, Affordability Rulemaking r.18-07-006. July 27 2022.

**(END OF APPENDIX D)**