


Exhibit Number: : SED-47  
CPUC Proceeding : H.25-07-005  
Sponsor : SED  
Witness : Ed Pike  
Date Ident. : \_\_\_\_\_  
Recd. : \_\_\_\_\_  
Admin. Law Judge : Gerald F. Kelly



**SAFETY ENFORCEMENT DIVISION  
California Public Utilities Commission**

**USFS Slater Fire Investigation Report**

San Francisco, California  
May 2026

	<b>REPORT OF INVESTIGATION</b> <i>(Reference FSH 5309.11)</i>	Case/File Number <b>20-05-MBBK0WI</b>														
Controlling Office <b>R5 - Law Enforcement and Investigations</b>		Investigating Office <b>LE&amp;I – Klamath National Forest</b>														
Case Type <b>Fire</b>		Investigative Period From: <b>10/5/20</b> To <b>12/8/20</b>														
Case Status <b>Pending Judicial Action</b>		Report Type <b>Supplemental/Final</b>														
Case Name <b>Slater Fire</b>		Investigated By Special Agent <b>b6 &amp; b7C</b>														
<b>SYNOPSIS</b>																
<p>On September 8, 2020, the "Slater Fire" ignited on U.S. Forest Service (USFS) land on Slater Butte, 5 miles north of Happy Camp within the Klamath National Forest (KNF).</p> <p>At the time of report the fire has been estimated at burning 157,229 acres with firefighting cost yet to be determined. Approximately 237 structures have been reported damaged with 197 of those being residential. Two fatalities are being investigated related to the Slater Fire.</p> <p>An origin and cause investigation was conducted 3 days after discovery of the fire. A general origin area of the Slater Fire was located just off Forest Road (FR) 17N48 below the Slater Butte Lookout. The cause of the Slater Fire was determined to be down power lines.</p> <p>The power line is operated by PacifiCorp and is permitted by the KNF.</p> <p>Case pending judicial action.</p>																
Distribution <table style="width:100%; border-collapse: collapse;"> <thead> <tr> <th style="text-align: left;">Unit</th> <th style="text-align: center;">Copies</th> </tr> </thead> <tbody> <tr> <td>LEI, WO</td> <td style="text-align: center;">_____</td> </tr> <tr> <td>LEI, Region</td> <td style="text-align: center;">5</td> </tr> <tr> <td>LEI, Region</td> <td style="text-align: center;">_____</td> </tr> <tr> <td>US Attorney</td> <td style="text-align: center;">_____</td> </tr> <tr> <td>Other Case Agent</td> <td style="text-align: center;">1</td> </tr> <tr> <td>Other</td> <td style="text-align: center;">_____</td> </tr> </tbody> </table>	Unit	Copies	LEI, WO	_____	LEI, Region	5	LEI, Region	_____	US Attorney	_____	Other Case Agent	1	Other	_____	Prepared By: <b>b6 &amp; b7C</b> <div style="text-align: right; margin-right: 50px;">Signature _____</div> <div style="text-align: right; margin-right: 50px;">Date _____</div> Reviewed By: _____ <div style="text-align: right; margin-right: 50px;">Signature _____</div> <div style="text-align: right; margin-right: 50px;">Date _____</div> Approved By: <b>b6 &amp; b7C</b> <div style="text-align: right; margin-right: 50px;">Signature _____</div> <div style="text-align: right; margin-right: 50px;">Date _____</div>	
Unit	Copies															
LEI, WO	_____															
LEI, Region	5															
LEI, Region	_____															
US Attorney	_____															
Other Case Agent	1															
Other	_____															
NOTE: This document is for OFFICIAL USE ONLY. It and its contents are not to be distributed outside your agency, nor duplicated, without prior approval of the USDA, Forest Service, Law Enforcement and Investigations.																



**REPORT OF INVESTIGATION**  
(Reference FSH 5309.11)

Case/File Number

**20-05-MBBKOWI**

**INTRODUCTION**

The case originated on September 8, 2020 when fire was reported in the early morning hours on Slater Butte within the KNF. The fire would eventually spread to the north and west and impact 157,229 acres to also include portions of the Six Rivers NF, the Rouge Siskiyou NF, and the counties of Siskiyou (CA), Del Norte (CA), and Josephine (OR).

**DETAILS**

**Applicable Statutes – Not Limited to:**

**Title 18 of the United States Code, 1855- Willfully, without authority, set a fire in any National Forest land within Special Maritime and Territorial Jurisdiction- Felony.**

**Title 18 of the United States Code, 1856- Kindle a fire in any National Forest land within Special Maritime and Territorial Jurisdiction- Misdemeanor.**

**36 Code of Federal Regulations 261.5(a) – Carelessly placing a lighted substance that may cause a fire on National Forest land - Misdemeanor**

**36 Code of Federal Regulations 261.5(c) – Causing timber, trees, slash, brush or grass to burn on National Forest land without proper authorization - Misdemeanor**

**36 Code of Federal Regulations 261.5(e) – Allowing a fire to escape from control on National Forest land - Misdemeanor**

**California Penal Code section 451(d) – Willfully and maliciously set fire to any forest land - Felony**

**California Penal Code section 452(d) - Unlawfully Causing a fire of any forest land - Misdemeanor**

**Report of Fire**

On September 08, 2020 **b6 & b7C** a U.S. Forest Service (USFS) employee, awoke in the Slater Butte Lookout to discover that the power had went out sometime during the night. **b6 & b7C** reported very strong winds had arisen during the night and when awoke he could smell smoke. **b6 & b7C** got into his vehicle and found a large tree blocking his FR 17N48. The tree was near the gate used to close the road to the lookout and just beyond the gate **b6 & b7C** said he could see flames and a down power line to the west of the road. **b6 & b7C** reported his finding at 0638 hours.

Previous Editions are Obsolete



**REPORT OF INVESTIGATION**  
(Reference FSH 5309.11)

Case/File Number

**20-05-MBBK0WI****Specific Origin Identification**

Reduced fire activity allowed SA **b6 & b7C** and **b6 & b7C** to access Slater Butte on September 11, 2020 and an examination of the area revealed a 69kv transmission power line coming up the west slope of Slater Butte, crossing over a saddle at FR 17N48, and continuing down the east slope toward Cade Mountain. A 12kv power line was mounted under the 69kv line and split off at the saddle and turned south running up the ridge towards the lookout (**Exhibit 1- Distribution Line Google Map**). The insulators and cross member where the 12kv line left the transmission line were bent. **b6 & b7C** an employee with PacifiCorp met investigators on scene to confirm that the power line was deenergized. **b6 & b7C** indicated this was his first opportunity to see the equipment on Slater Butte and that he had made no alterations to the equipment. Two fuses were still in place with spare fuses hanging on a hook on the pole (**Exhibit 2- Fuse Between Transmission and Distribution Line Photos**). **b6 & b7C** stated that the fuses had been changed out months to weeks ago and the old fuses had been left hanging on the pole. Fuses at the top of Slater Butte where the 12kv distribution line terminated at the mountain top equipment also remained in place (**Exhibit 3- Fuse between Distribution Line and Transformer**). With the equipment deenergized at other locations, all equipment was left in the state it was found. A series of short videos was recorded by SA **b6 & b7C** shortly after arrival to document the scene as it was found.

The 12kv distribution line was approximately 1/3 of a mile long from the transmission line to where it terminated at a transformer located near the lookout tower. After the first pole south of the transmission line (Pole 6, 135400) the west conductor was down on the ground. The remnants of a large tree were located on the ground between Pole 5 (35300) and Pole 4 (136300) (**Exhibit 4- Photo of Fallen Tree into ROW**). The large tree, a White Fir, was the same tree that blocked FR 17N48 and appeared to have impacted the power lines when it fell. The center of the tree was hollowed and rotted but appeared healthy on the exterior with green needles and cones. A glossy, newly formed, fulgurite was located on the ground next to the west conductor in this same area. Burn marks were found on the upper portions of vegetation where the west conductor was resting in brush. The west Conductor was severed near this point with the north end resting in a small tree and the south end recoiling and coming to rest between Pole 4 (136300) and Pole 3 (136201). The east conductor remained intact but was pulled down from the Pole 4 (136300) and was resting on the ground at the base of the pole. Both conductors returned to the cross member on Pole 3 (136201) and continued to the point of termination near the lookout at Pole 1 (136102). The RAWS weather station located on Slater Butte had recorded winds that averaged 33 to 37 mph between 01:00 and 06:00 out of the east. The maximum wind speed recorded for that time was at 54 mph at 05:00 and 06:00 and relative humidity fell to 20 percent (**Exhibit 5- Slater RAWS Weather**).

The perimeter of the suspected general origin area was walked by SA **b6 & b7C** and **b6 & b7C** and then walked again in the opposing direction. By examining macro and micro burn pattern indicators SA **b6 & b7C** and SA **b6 & b7C** identified the initial run that the fire made from northeast to southwest, from the ridge under the power line, and across the western flank of Slater Butte. SA **b6 & b7C** and SA **b6 & b7C** worked back and forth across the initial run identifying fire indicators until the heel of the fire was reached. The heel of the fire was near the west side down conductor near where the vegetation had been struck by the conductor and the fulgurite was found. The area near the fulgurite and the struck vegetation was lightly burned. The top of the down tree lay between the fulgurite and struck vegetation and was largely consumed. Fire heavily impacted the area between the fulgurite and the vegetation strikes. It is likely multiple ignition points existed in this area, but indicators were destroyed by fire after the initial ignition. The origin and cause investigation concluded that a down power line was the most probable cause of the Slater Fire. The area was mapped on September 15, 2020 by SA **b6 & b7C** using a FARO laser scanning system.



**REPORT OF INVESTIGATION**  
(Reference FSH 5309.11)

Case/File Number

**20-05-MBBKOWI****Loss of Power to Slater Butte Lookout**

b6 & b7C reported the Slater fire to dispatch at 06:38 hours after awaking to find the power out at the lookout and going to investigate the reason for the power outage. Slater Butte host several communication sites permitted by the USFS. Several of the parties were contacted to determine if equipment had logged the power outage in order to determine the time that power was lost. Siskiyou County consulted online access to the digital PacifiCorp meter on its equipment and reported power loss at 05:15 AM. The meter reports in 15-minute intervals. Siskiyou Telephone reported receiving an interruption of power alarm at 05:41 AM. Verizon Wireless reported receiving an alarm for commercial power failure at 05:41 AM. CalOES also reported a fail alarm at 05:41 AM. All of these reports indicated a loss of commercial power and a switch to on site generated power (**Exhibit 6- Power Fail Alarm Reports**). Generators provided power for several days. b6 & b7C, an employee of the Grey Eagle Mine located on the west slope of Slater Butte, reported that an employee of PacifiCorp, b6 & b7C, passed through the mine at approximately 08:15 AM on September 8 and disconnected the power on the 69kv transmission line above the mine as the transmission line continued up to the saddle on Slater Butte (**Exhibit 7- Memorandum of Interview b6 & b7C**).

**Probable Course of Events**

Evidence supports that at some time in the early morning hours of September 8, 2020 a White Fir tree located on the east side of FR 17N48 near the Slater Butte lookout gate fell towards the west, onto the road, and into the 12kv distribution line of PacifiCorp that serviced equipment on the top of Slater Butte. A RAWS weather station on Slater Butte had registered increasing winds through the early morning hours of September 8, 2020. At 18:00 hours on September 7 the winds averaged 6 mph with a maximum gust of 23 mph. By 06:00 the following morning the winds averaged 34 mph with a maximum gust of 54 mph, the highest recorded gust prior to the fire's discovery. Red Flag warnings had been issued for the area by the National Weather Service through Wednesday, September 9 with the expectation that critical fire weather would persist (**Exhibit 8- Red Flag Fire Weather Forecast**). The White Fir tree was approximately 2 feet 10 inches at breast height and was cut and/or broken into several sections after it fell. When reconstructed the tree was estimated to be approximately 95.5 feet tall when it fell. It was approximately 43 feet from the base of the tree to the east edge of the of the power line right of way measured along the trunk of the tree.

When the tree fell it appears to have struck both conductors causing the east conductor to be pulled from the insulator of Pole 4. The west conductor and the insulator were broken from the crossmember of Pole 4. The west conductor then severed. The east conductor remained intact and possibly was freed from the tree as the tree burned. It is unknown at what time the conductors were struck by the tree or how long the conductors remained energized once struck by the tree or after contacting the ground.

**KNF Permits Issued to PacifiCorp**

The U.S. Forest Service had issued 11 separate permits to PacifiCorp at the time of the Slater Fire for distribution facilities crossing federal lands within the KNF. Work was underway to consolidate the 11 permits under one master permit at the time of the Slater fire. The 12Kv distribution line where the Slater Fire originated is located in Section 13 of Township 17N and Range 7E and it is approximately 1,860 feet from its origin at the 69Kv transmission line to Pole 1 at the top of Slater Butte. The distribution line consisted of six power poles. Both the 69Kv transmission line and 12Kv distribution line are addressed under the following permits.

Previous Editions are Obsolete

**REPORT OF INVESTIGATION**  
(Reference FSH 5309.11)

Case/File Number

**20-05-MBBK0WI**

HAP4029 12 was signed December 29, 1970 and is in effect for 50 years expiring on December 29 of 2020 (**Exhibit 9- Special Use Permit HAP4029 12**). The permit outlines the construction, operating, and maintenance of single-phase distribution lines of various voltages not to exceed 12.5Kv. The permit applies to lands and improvements up to 17,664 feet in length across lands of the United States within the Klamath National Forest in various sections to include Section 13, Township 17 N, Range 7E on Slater Butte. The permit states that the right of way will be 20 feet in width. Among the many provisions the permit states that the permittee will take all reasonable precautions to prevent and suppress forest fires, pay the United States the suppression costs resulting from any fires caused by the operation, and the permittee shall pay the United States for any damage resulting from this use .

The location of the distribution line, Section 13, T 17N, R7E, is also discussed in HAP4029 01 signed December 28, 1992 (**Exhibit 10- Special Use Permit HAP4029-01**). The permit that covers Sec. 13, T17N, R7E is listed as previously being covered by a permit dated March 18, 1952 and states the right of way being 40 feet. The legal descriptions within section 13 and the width of the right of way indicate that this permit was intended to include the 69Kv transmission line, and not the 12Kv distribution line in that same section.

**Evidence of Prior Line Maintenance**

Upon arrival on September 11, 2020 SA **b6 & b7C** and SA **b6 & b7C** located evidence of maintenance to the 12Kv power line. Two fuses were hanging from the center pole of the 69Kv transmission line. Several discarded pieces of power line and cooper wire were found within the power line right of way of the 12Kv distribution line. The power line pieces were determined to be discarded pieces from prior line maintenance due to the nature in the way it was located. The line was coiled and removed to the sides, or even outside the right of way. When digging out a fulgurite, solid copper wire was located buried below ground (**Exhibit 11- Discarded Conductor**).

The 12Kv distribution power lines had several splices located in the section where the Slater fire originated (**Exhibit 12- Photo of Line Splices**). Eight splices were located on the east conductor and 12 splices were located on the west over the span of the distribution line. In some places the splices were separated by only a few feet of conductor. At the point where the west conductor was severed, it appeared two separate diameters of aluminum power line were spliced together, one without a center steel wire.

Outside of the general origin area, between Pole 5 and 6, SA **b6 & b7C** and SA **b6 & b7C** noticed numerous fulgurites. The fulgurites were generally small and weathered. Burn pattern indicators did not support any of these fulgurites being the origin of the Slater fire. A video was taken to document the locations of the fulgurites and at the conclusion of the investigation the fulgurites were removed and approximately 40 separate pieces of fulgurite were collected (**Exhibit 13- Prior Fulgurite Collection**). The presence of fulgurites indicates that at some point in the past live conductors had impacted the ground in this area.

Maintenance records, line data, and hazard reduction records from PacifiCorp have not been obtained.



**REPORT OF INVESTIGATION**  
(Reference FSH 5309.11)

Case/File Number

**20-05-MBBKOWI****Description of West Conductor**

The west conductor severed at the approximate location the top of the large fallen tree had entered the power line right of way between Pole 5 and Pole 4. The north end of the severed west conductor was gathered into a short tree and had more or less appeared to come down in the same place as it had been suspended. The tree had burn marks around all the branches emanating from the tree trunk indicating the tree had become electrically charged. The frayed north end of the west conductor had strands that were necked down consistent with a tensile overload fracture (**Exhibit 14- Photo of North End of West Conductor End in Charred Tree**). Several other stems on trees and shrubs were located nearby with electrically burned and charred vegetation. Marks on the conductor corresponded to the charred vegetation (**Exhibit 15- Charred Vegetation & West Conductor**). In several places along the conductor the outer aluminum strands had been melted and stretched revealing the inner steel center strand. Where the west conductor had severed the center steel strand was not visible and it appeared this thinner section may be comprised of only aluminum strands. Further testing will be required to determine the conductor configuration.

The west conductor to the south of the severe had recoiled and had come to rest in the vegetation between Poles 4 and 3 (**Exhibit 16- Photo of South End of West Conductor End**). Vegetation in the area had charred marks indicating that the conductor remained energized after it had severed. An insulator was still attached to the west conductor from where it broke free from the top of Pole 4. The south end severe also had necked down strands consistent with a tensile overload fracture. No center steel strand was identifiable in the conductor.

The White Fir tree had fallen in the area just north of the severed north end of the west conductor and south of the fulgurite. The fallen tree top section had been largely consumed by fire and the west conductor had been melted into several sections in this area between Pole 4 and Pole 5 (**Exhibit 17- Photo of Melted Sections West Conductor**). No indication of the middle steel strand was found in these melted sections.

**Description of East Conductor**

The east conductor remained intact over the course of the span. A small diameter tree was resting on the east conductor between Poles 5 and 4. The tree had not been consumed by fire at the top but was heavily impacted at the base. The tree showed no signs of charring where it impacted the east conductor (**Exhibit 18- Photos of Contact of East Conductor and tree post fire**). This tree was unrelated to the incident that ignited the Slater fire.

Near where the west conductor was severed and just south of the fallen tree that had blocked FR 17N48, debris was located on the east conductor. The debris, which appeared to be sap and bark, was consistent with a tree impacting the conductor (**Exhibit 19- Photo of Residue on East Conductor**).

The east conductor was pulled from the insulator at the top of Pole 4 and was touching the ground at the base of Pole 4. No fulgurites, arc erosion on the conductor, or burn pattern indicators to suggest an ignition point were found at this location.

**REPORT OF INVESTIGATION**  
(Reference FSH 5309.11)

Case/File Number

20-05-MBBK0WI

**Examination of Fulgurite**

Along the west conductor and to the north of the north side severed conductor, a large fulgurite was located adjacent to the west conductor within the specific origin of the fire. The fulgurite had a thin, delicate glassy bubble on the top. The west conductor had marks where it was arc eroded and melted next to the fulgurite (**Exhibit 20- Fulgurite and West Conductor at Origin**). The soil was carefully removed from around the fulgurite with brushes, dental picks, and trowels by SA [b6 & b7C] and [b6 & b7C]. The fulgurite persisted just under the surface of the soil for several inches and then made a vertical turn down for several more inches. The fulgurite was removed in two sections and then the following day the third vertical sections was extricated. The fulgurite had a hollow center and terminated against the root of a tree approximately 8 inches underground. The root where it was impacted by the fulgurite was charred and burned. A mass of solid copper wire was unearthed near the fulgurite and a section of the wire was melted to the exterior of the fulgurite. Overall the fulgurite was approximately 27 inches long. The size of the fulgurite, depending on soil conditions, may indicate that the current flowed through the conductor for an extended period of time. No information on automatic circuit reclosers have been obtained from PacifiCorp.

**Examination of Fallen Tree**

[b6 & b7C] located a tree across FR 17N48 when he left the lookout on the morning of September 8, 2020, just prior to the lookout gate across the road. Engine 327 was dispatched to remove the tree from the roadway in order to free [b6 & b7C]. Engine 327 cut five pieces out of the tree and rolled them off the downslope side of the road in order to open the road. The tree had partially uprooted as it fell. The trunk of the tree then cracked at about six feet above ground level on the windward (east) side. The tree then cracked open down to the ground level on the west side. The interior of the tree near the base was hollow with wet, rotten wood (**Exhibit 21- White Fire Tree Photos**). [b6 & b7C], a Forest Pathologist with the USFS examined the tree and determined it to be a White Fire. [b6 & b7C] found heart-rot in the basal portion of the bole from below ground level extending upwards approximately six feet. [b6 & b7C] also discovered a white-rot and Rhizomorphs (melanized mycelial cords) present on the decaying wood (**Exhibit 22- [b6 & b7C] REPORT**). A cross section of the tree base was collected and stored by the USFS as evidence. The tree measured approximately 137 feet tall. The upper branches of the tree, though now burned, showed evidence of green healthy needles and was producing cones. [b6 & b7C] an entomologist with the USFS described the tree as one that would not be identified or classified as a hazard given its outward appearance.

**Cost to the Government**

To this date, the cost to the government for fire suppression has not been determined as cost continue to be incurred. Final costs, along with resource damages, have not been determined. As of November 28, 2020 the Slater Fire was 100% contained.

\*\*\*\*\*

**DISPOSITION**

Case closed pending judicial or civil action.



**REPORT OF INVESTIGATION**  
(Reference FSH 5309.11)

Case/File Number  
**20-05-MBBKOWI**

**SUMMARY**

On September 8, 2020, the Slater Fire was reported within the boundaries of the KNF. An origin and cause investigation was initiated, located a specific origin, and determined the cause of the fire to be down power lines. The Slater fire consumed 156,773 acres and caused two fatalities. 440 structures were lost due to the fire, with 197 being residences. The dower line was permitted by the USFS and was owned and operated by PacifiCorp. No suppression cost available.

\*\*\*\*\*

**EXHIBITS**

<u><b>Exhibit No.</b></u>	<u><b>Description</b></u>	<u><b>Page Introduced</b></u>
1	Google Map of Distribution Line on Slater Butte	3
2	Photos of Fuse Between Transmission and Distribution Lines	3
3	Photos of Fuse Between Distribution Line and Transformer	3
4	Photos of Fallen Tree Into ROW	3
5	RAWS Weather Information for Slater Butte, CA	3
6	Power Failure Alarm Reports	4
7	Memorandum of Interview <b>b6 &amp; b7C</b>	4
8	Red Flag Weather Forecast for September 8, 2020	4
9	USFS Special Use Permit "HAP4029 12"	5
10	USFS Special Use Permit "HAP4029 01"	5
11	Photos of Discarded Conductor	5
12	Photos of Power Line Splices	5
13	Photos of Previous Area Fulgurite Collection	5
14	Photos of Charred tree & North End West Conductor	6
15	Photos of Charred Vegetation & West Conductor	6
16	Photos of West Conductor South End	6
17	Photos of Melted Sections West Conductor	6
18	Photos of Contact of East Conductor and Tree Post Fire	6
19	Photos of Residue on East Conductor Above White Fir	6
20	Photos of West Conductor and Fulgurite at Origin	7
21	White Fir Tree Photos	7
22	Pathologist <b>b6 &amp; b7C</b> Report	7



**REPORT OF INVESTIGATION**  
*(Reference FSH 5309.11)*

Case/File Number

**20-05-MBBKOWI**

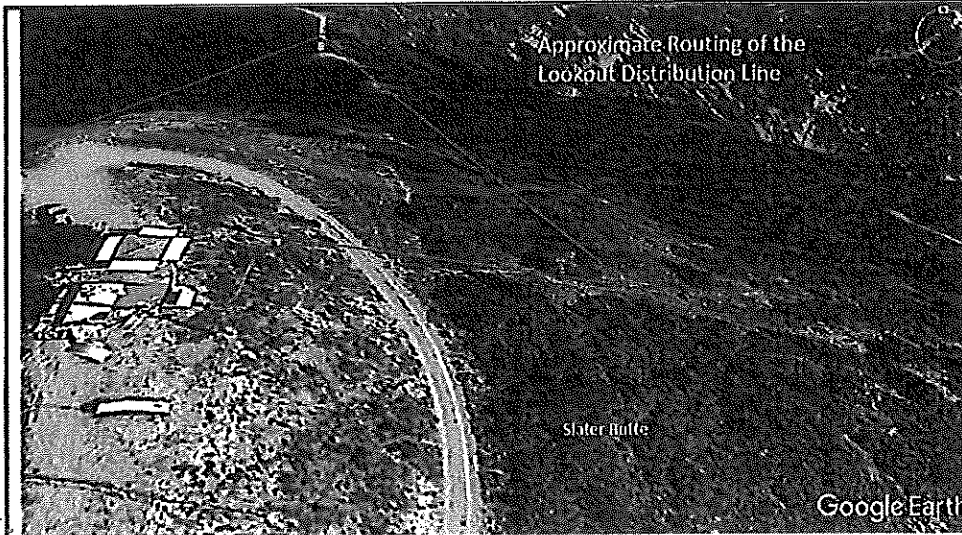
**NOTE:** This document is for OFFICIAL USE ONLY. It and its contents are not to be distributed outside your agency, nor duplicated, without prior approval of the USDA, Forest Service, Law Enforcement and Investigations.



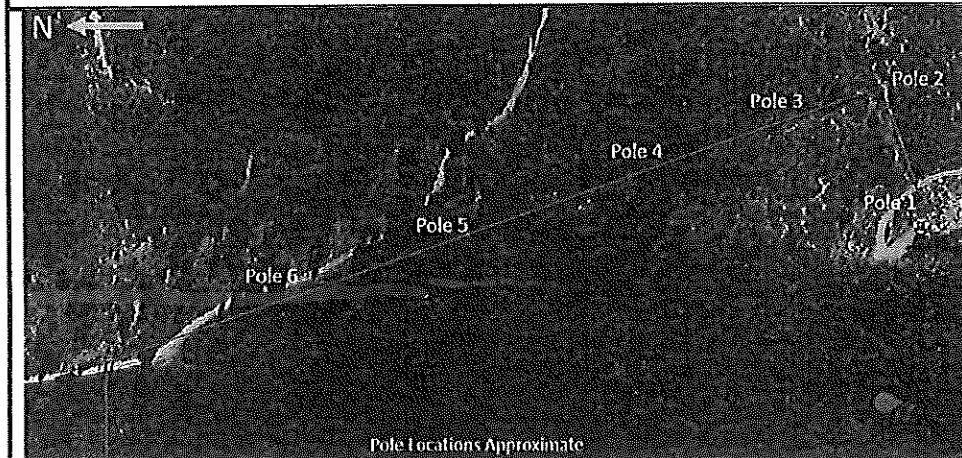
United States Department of Agriculture  
Forest Service

**Photograph Exhibit 1**

Case Name	Case/File Number
Slater	20-05-MBBK0WI
Case Type	Date of Incident
Wildland Fire	9/8/2020



Photograph Number: NA  
Date: NA  
Time: NA  
Photographer: NA  
Subject: Approximate Route of Distribution Line



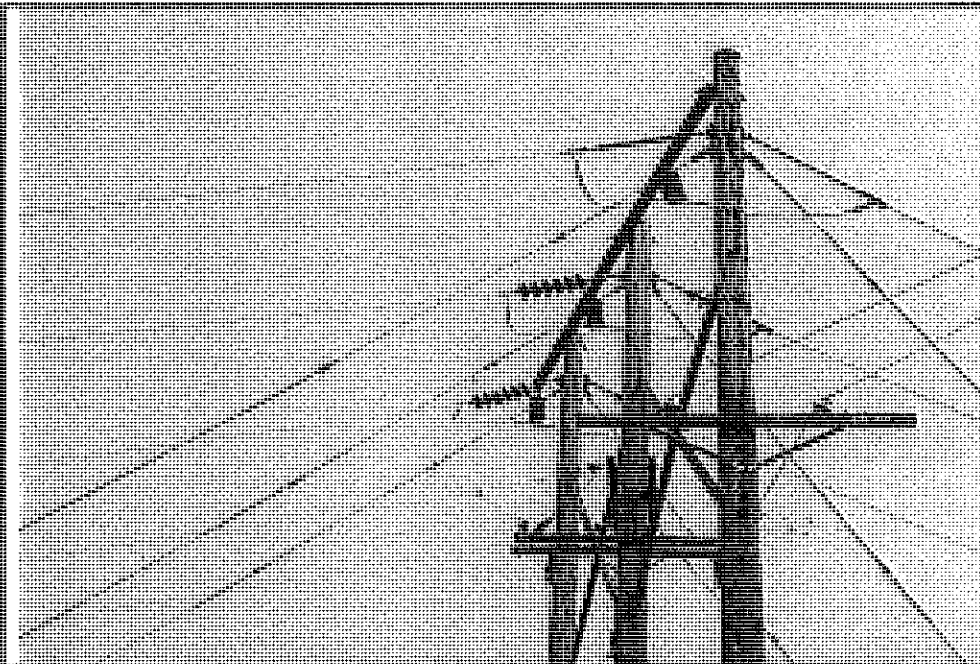
Photograph Number: NA  
Date: NA  
Time: NA  
Photographer: NA  
Subject: Power Pole Sequence In Distribution Line



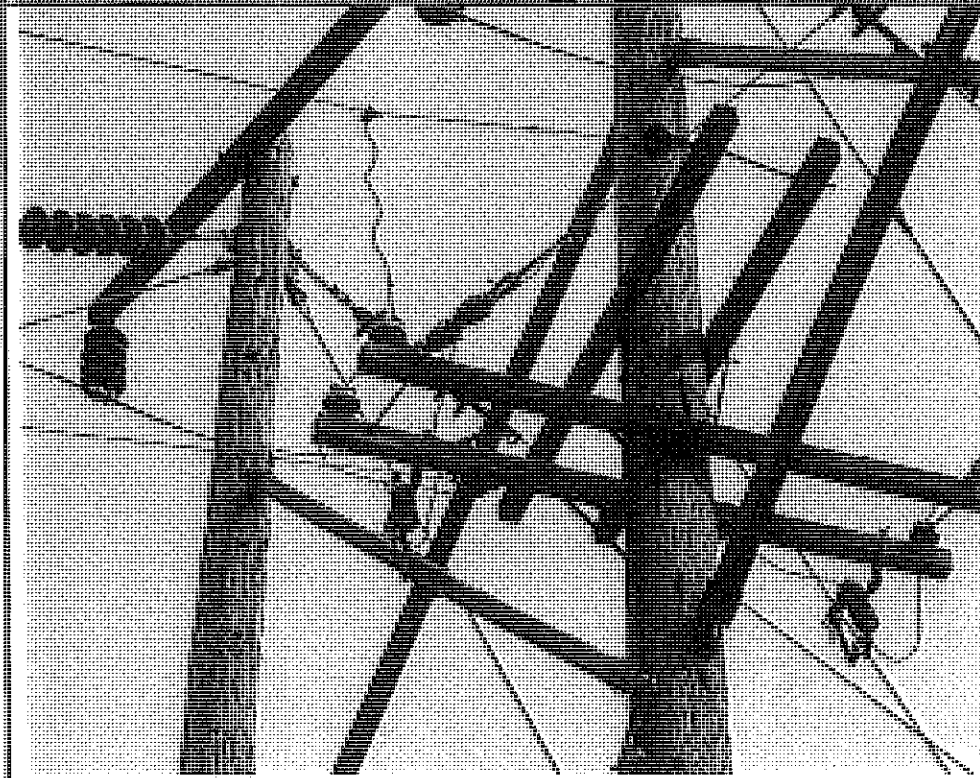
United States Department of Agriculture  
Forest Service

### Photograph Exhibit 2

Case Name <b>Slater</b>	Case/File Number <b>20-05-MBBK0W1</b>
Case Type <b>Wildland Fire</b>	Date of Incident <b>9/8/2020</b>



Photograph Number:  
5 Electrical  
Date:  
9/13/20  
Time:  
1:00  
Photographer:  
[REDACTED]  
Subject:  
Point at which where 69kV  
transmission line and 12kV  
distribution line diverge.



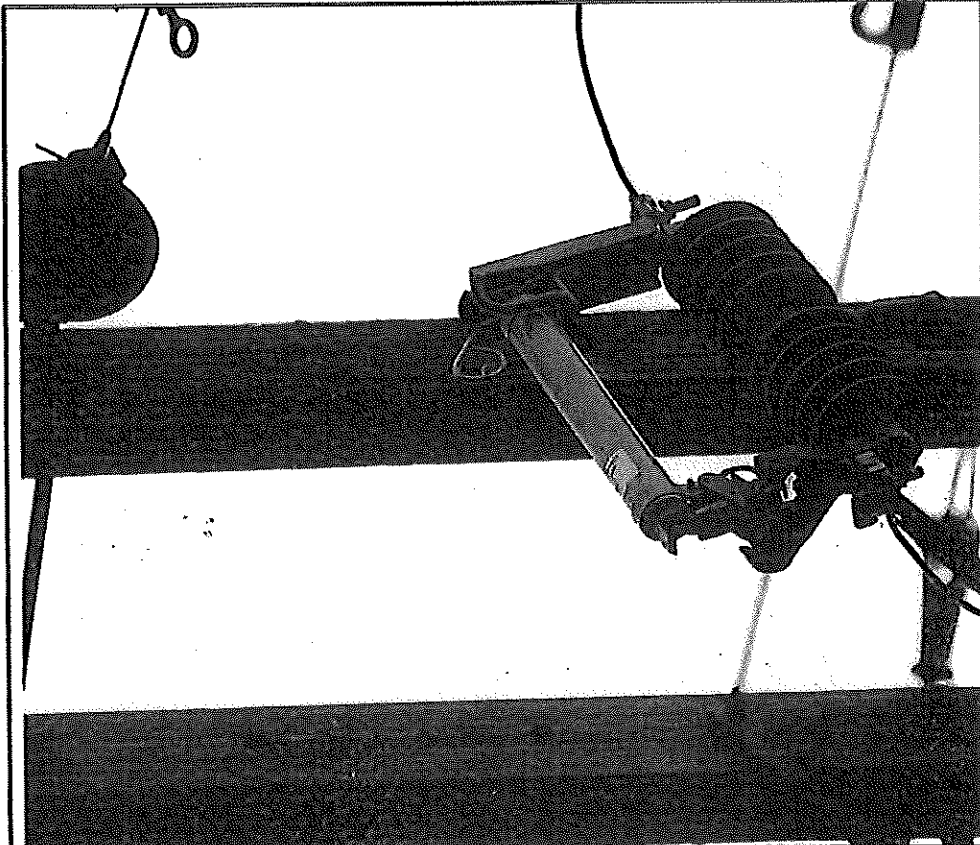
Photograph Number:  
6 Electrical  
Date:  
9/13/20  
Time:  
1:00  
Photographer:  
[REDACTED]  
Subject:  
Overall of lines on 12kV distribution  
line.



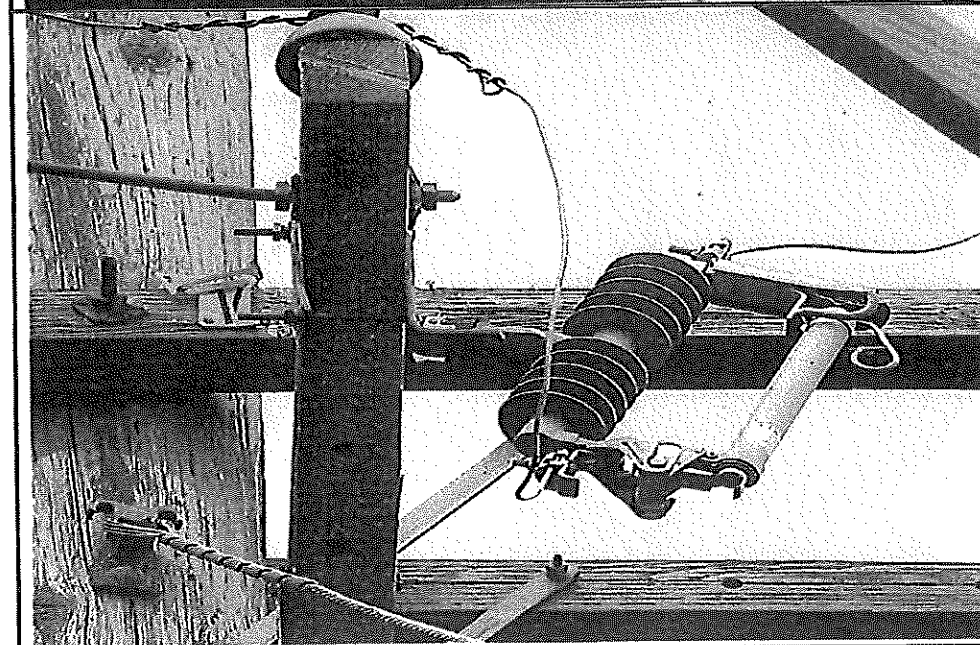
United States Department of Agriculture  
Forest Service

Photograph Exhibit 2

Case Name	Case/File Number
Slater	20-05-MBBK0WI
Case Type	Date of Incident
Wildland Fire	9/8/2020



Photograph Number:  
12 Electrical  
Date:  
9/13/20  
Time:  
1115  
Photographer:  
b6 & b7C  
Subject:  
Close up of west fuse



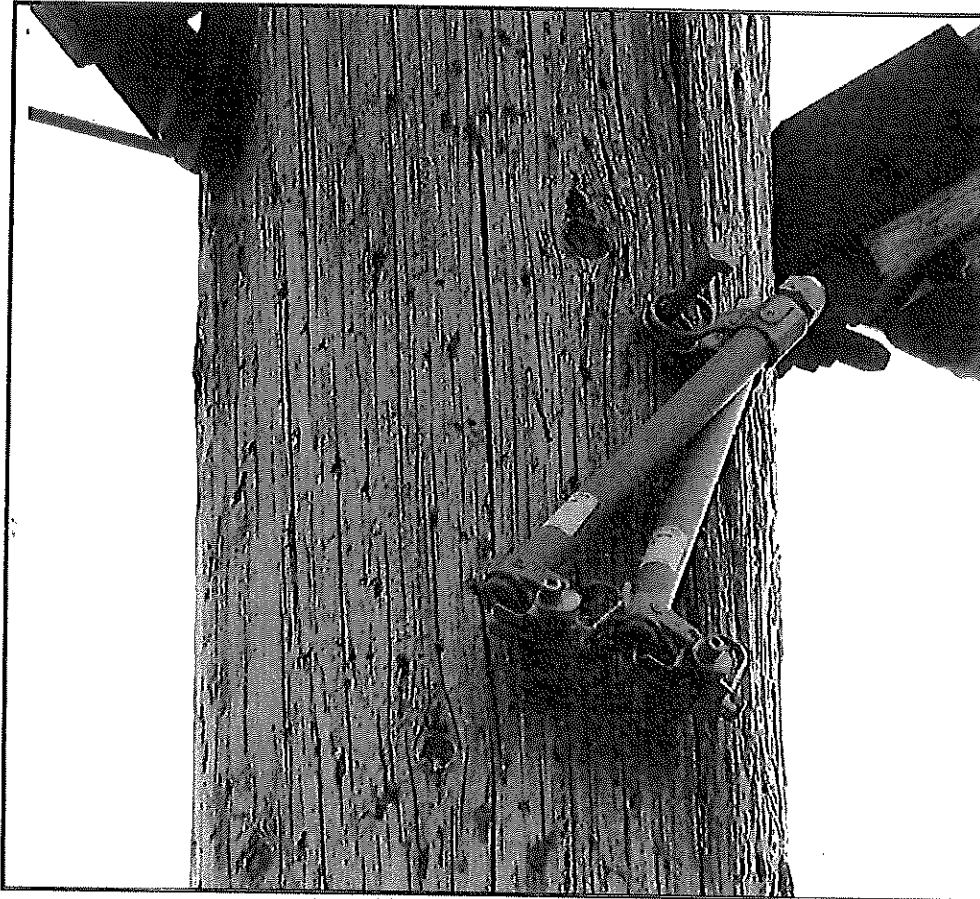
Photograph Number:  
15 Electrical  
Date:  
9/13/20  
Time:  
1118  
Photographer:  
b6 & b7C  
Subject:  
Close up of east fuse



United States Department of Agriculture  
Forest Service

**Photograph Exhibit 2**

Case Name <b>Slater</b>	Case/File Number <b>20-05-MBBK0WI</b>
Case Type <b>Wildland Fire</b>	Date of Incident <b>9/8/2020</b>



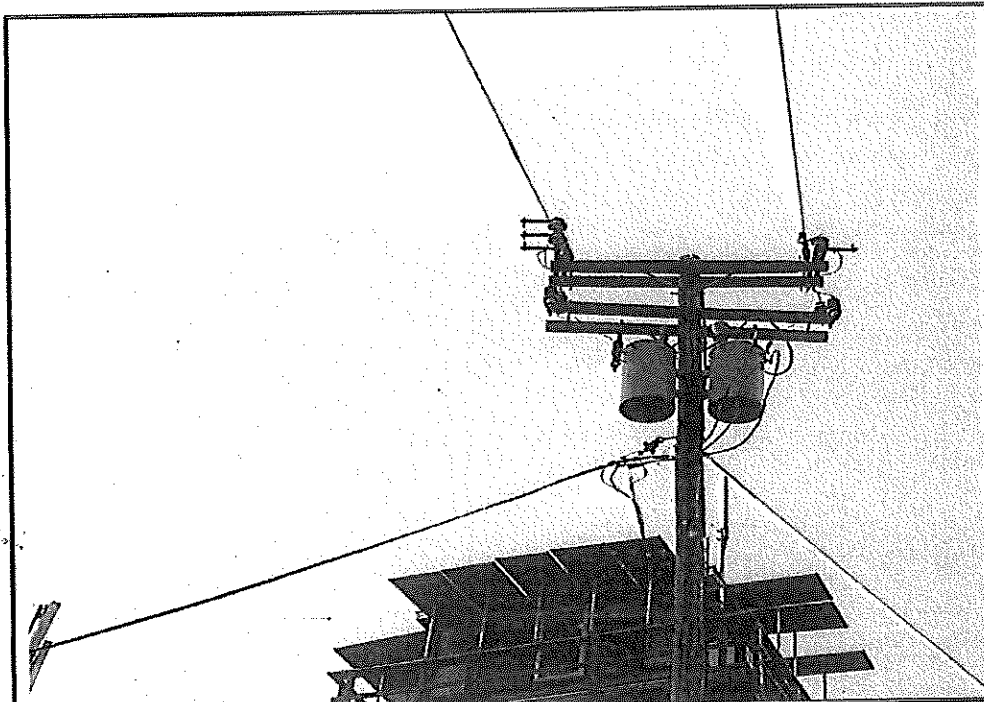
**Photograph Number:**  
19 Electrical  
**Date:**  
9/13/20  
**Time:**  
1122  
**Photographer:**  
b6 & b7C  
**Subject:**  
Close up of additional fuses hanging  
from pole



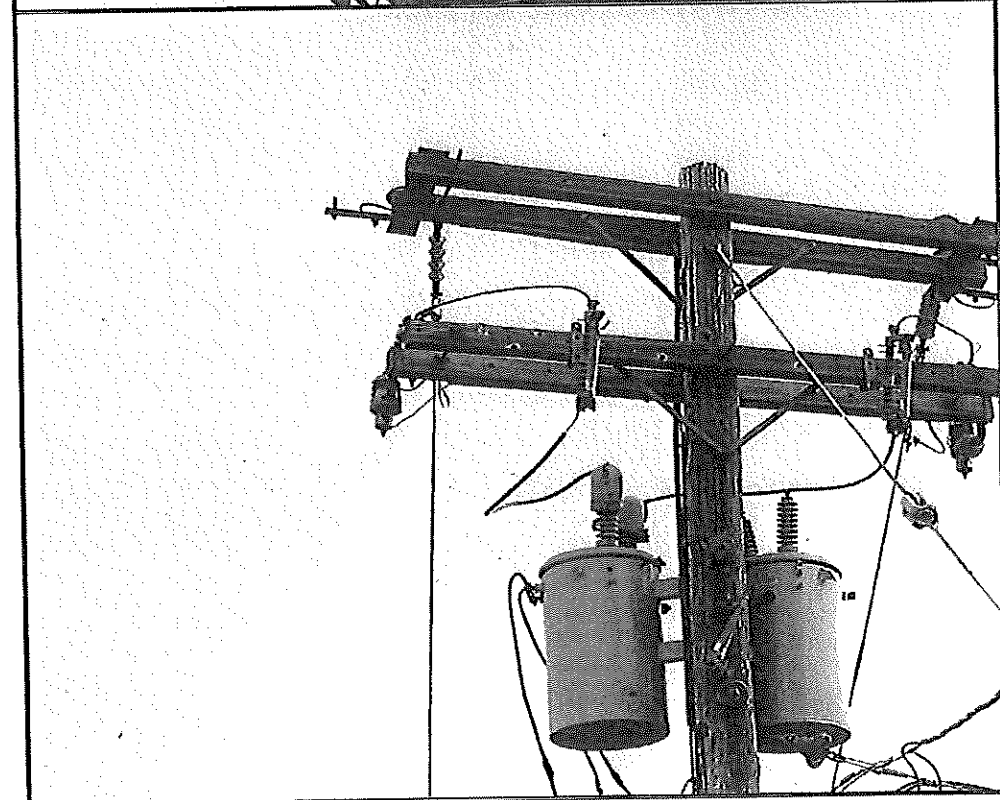
United States Department of Agriculture  
Forest Service

**Photograph Exhibit 3**

Case Name	Case/File Number
Slater	20-05-MBBK0W1
Case Type	Date of Incident
Wildland Fire	9/8/2020



**Photograph Number:**  
55 Electrical  
**Date:**  
9/13/20  
**Time:**  
1228  
**Photographer:**  
b6 & b7C  
**Subject:**  
East side of Pole 1



**Photograph Number:**  
58 Electrical  
**Date:**  
9/13/20  
**Time:**  
1230  
**Photographer:**  
b6 & b7C  
**Subject:**  
West side of Pole 1



United States Department of Agriculture  
Forest Service

### Photograph Exhibit 4

Case Name	Case/File Number
Slater	20-05-MBBK0W1
Case Type	Date of Incident
Wildland Fire	9/8/2020



Photograph Number:

14 Tree

Date:

9/13/20

Time:

0951

Photographer:

EO & BTG

Subject:

White Fir tree fallen across road  
across 12th distribution line to the  
west. Photo is looking to the north.



Photograph Number:

33 Tree

Date:

9/13/20

Time:

1044

Photographer:

EO & BTG

Subject:

White Fir tree down cut east section  
looking west uphill towards power  
line right off way.



United States Department of Agriculture  
Forest Service

### Photograph Exhibit 4

Case Name	Case/File Number
Slater	20-05-MBBK0W1
Case Type	Date of Incident
Wildland Fire	9/8/2020



Photograph Number:  
57 Tree  
Date:  
9/12/20  
Time:  
10:51  
Photographer:  
EG & BTC  
Subject:  
Top of White Fir tree looking west  
with cum conductor visible near end  
of tree trunk.



Photograph Number:  
58  
Date:  
9/12/20  
Time:  
10:52  
Photographer:  
EG & BTC  
Subject:  
Top of White Fir tree under EHV  
distribution line. Tree leaning on  
cum conductor not associated with  
initial wind event and cum.



United States Department of Agriculture  
Forest Service

**Photograph Exhibit 5**

Case Name <b>Slater</b>	Case/File Number <b>20-05-MBBK0W1</b>
Case Type <b>Wildland Fire</b>	Date of Incident <b>9/8/2020</b>

**Slater Butte California**

Daily Summary for  
**September 8, 2020**

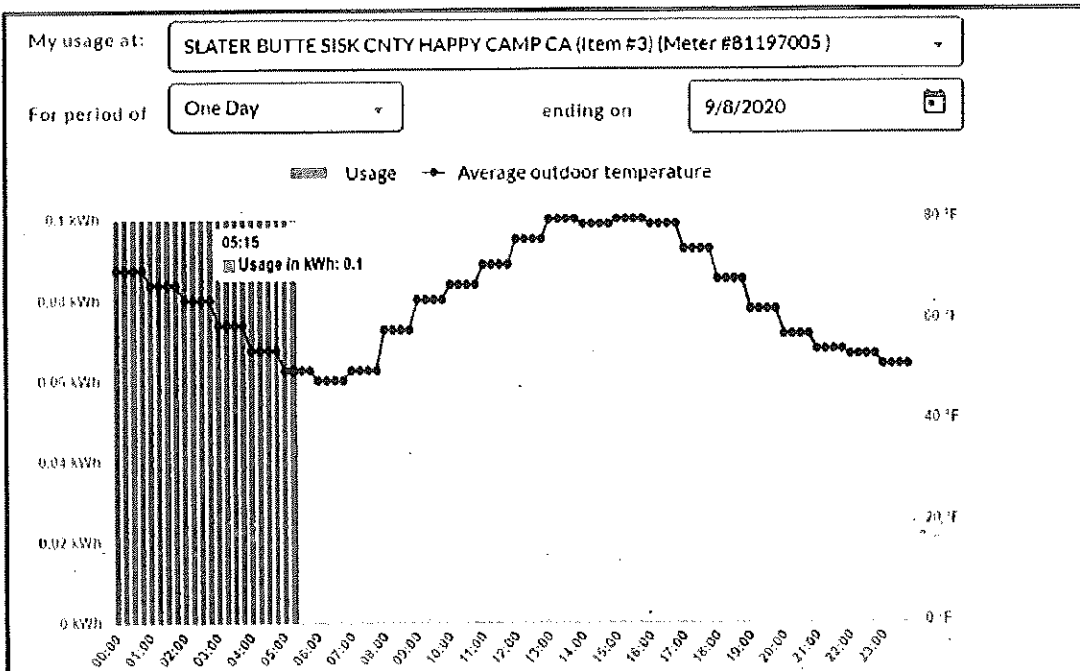
Photograph Number:  
NA  
Date:  
9/8/20  
Time:  
NA  
Subject:  
Slater Butte RA WS  
Weather data for 9/8/20.

Hour of Day	Total Solar	Wind		Air Temperature	Fuel Temperature	Fuel Moisture	Relative Humidity	Dew Point	Wet Bulb	Total Precip.	
Ending at L.S.T.	Rad. ly.	Ave. mph	V. Dir. Deg	Mean Deg. F.	Mean Deg. F.	Mean Percent	Mean Percent	Mean Deg. F.	Mean Deg. F.	Mean inches	
1 am	0.0	35.0	73	46.0	64.0	63.0	3.8	33	34	48	0.00
2 am	0.0	36.0	79	50.0	61.0	60.0	3.9	34	32	46	0.00
3 am	0.0	33.0	80	50.0	59.0	58.0	4.0	26	24	43	0.00
4 am	0.0	37.0	89	51.0	57.0	56.0	4.1	19	15	40	0.00
5 am	0.0	34.0	88	54.0	55.0	54.0	4.2	20	15	38	0.00
6 am	0.1	34.0	85	54.0	54.0	52.0	4.2	20	14	38	0.00
7 am	6.5	28.0	91	49.0	54.0	55.0	4.3	19	13	38	0.00
8 am	22.7	27.0	89	49.0	56.0	58.0	4.3	19	14	39	0.00
9 am	39.2	36.0	77	51.0	56.0	61.0	4.4	21	17	39	0.00
10 am	52.5	42.0	84	58.0	58.0	65.0	4.4	18	15	40	0.00
11 am	62.1	35.0	80	63.0	60.0	70.0	4.4	17	15	41	0.00
12 pm	52.4	33.0	72	52.0	63.0	68.0	4.4	15	15	42	0.00
1 pm	65.1	32.0	77	50.0	67.0	76.0	4.3	13	15	41	0.00



United States Department of Agriculture  
Forest Service  
**Photograph Exhibit 6**

Case Name	Case/File Number
Slater	20-05-MBBKOWI
Case Type	Date of Incident
Wildland Fire	9/8/2020



**Provider:**  
Siskiyou County  
**Date:**  
9/30/20  
**Time:**  
1032  
**Subject:** Digital Meter  
Usage for Siskiyou County  
Equipment on Slater Butte,  
9/8/20

**DPS Telecom**  
**Standard History**

Item	Site	Alarm date/time	Acknowledged date/time	In/Bats	Description
53.1.9.1	TMon Environmental	2020-09-08 05:30:44	2020-09-08 07:35:46	DPS	Low Case Fan RPM Warning
53.1.9.3	TMon Environmental	2020-09-08 05:30:44	2020-09-08 07:35:46	DPS	High Case Fan RPM
53.1.10.1	TMon Environmental	2020-09-08 05:30:45	2020-09-08 07:35:46	DPS	Low CPU Fan RPM Warning
53.1.10.3	TMon Environmental	2020-09-08 05:30:45	2020-09-08 07:35:46	DPS	High CPU Fan RPM
53.1.11.1	TMon Environmental	2020-09-08 05:30:46	2020-09-08 07:35:46	DPS	Low A/c Fan RPM Warning
53.1.11.3	TMon Environmental	2020-09-08 05:30:46	2020-09-08 07:35:46	DPS	High A/c Fan RPM
53.1.12.1	TMon Environmental	2020-09-08 05:30:47	2020-09-08 07:35:46	DPS	Low Linux Disk Space Warning
53.1.12.3	TMon Environmental	2020-09-08 05:30:47	2020-09-08 07:35:47	DPS	High Linux Disk Space
53.1.13.1	TMon Environmental	2020-09-08 05:30:47	2020-09-08 07:35:47	DPS	Low Linux Memory Avail Warning
53.1.13.3	TMon Environmental	2020-09-08 05:30:48	2020-09-08 07:35:47	DPS	High Linux Memory Avail
162.136.1.1	NW SLTR TO HCMP	2020-09-09 05:41:51	2020-09-09 07:35:47	DPS	AC FAIL
162.136.1.2	NW SLTR TO HCMP	2020-09-09 05:41:54	2020-09-09 07:35:47	DPS	BATT RUN
162.136.1.3	NW SLTR TO HCMP	2020-09-09 05:41:58	2020-09-09 07:35:47	DPS	CHARGER FAIL
162.136.1.3	NW SLTR TO HCMP	2020-09-09 05:41:58	2020-09-09 07:35:47	DPS	CHARGER FAIL
162.136.1.1	NW SLTR TO FTJH	2020-09-09 07:11:40	2020-09-09 07:35:47	DPS	SWT FAH

**Provider:**  
Siskiyou Telephone  
**Date:**  
9/30/20  
**Time:**  
1011  
**Subject:** Siskiyou  
Telephone Fail Alarm Log  
for Slater Butte  
Equipment, 9/8/20



United States Department of Agriculture  
Forest Service

**Photograph Exhibit 6**


Case Name <b>Slater</b>	Case/File Number <b>20-05-MBBK0W1</b>
Case Type <b>Wildland Fire</b>	Date of Incident <b>9/8/2020</b>

<p>BTSENSOR-862-4 Slater_butte 28-1700 critical BTS Relay Contact Alarm 20-09-08 05:41:33 "Equipment Malfunction" "Relay Open" "Commercial Power Failure"</p> <p>BTSENSOR-862-20 Slater_butte 28-1700 major BTS Relay Contact Alarm 20-09-08 05:41:43 "Equipment Malfunction" "Relay Open" "Generator Running"</p> <p>The information provided in these two entries is typical for when we lose power at a cell site. The first entry notified us of the commercial power failure. The alert flagged an "Equipment Malfunction" simply because the system had lost power, which caused the relay to open, and was therefore in an abnormal state. There was no actual malfunction of any of the equipment at the site.</p> <p>The second entry notified us that the generator had begun to run, 10 seconds after the loss of commercial power. The alert continued to include the "Equipment Malfunction" flag because the automatic transfer equipment initiated the generator on-site to operate, opening the relay, which was then read as being in an abnormal state. Again, there was no actual malfunction of any of the equipment at the site.</p> <p>Please feel free to contact me at <b>b6 &amp; b7C</b> if you have any further questions about our cell site or the information in these system readouts.</p> <p>Best regards,</p> <p><b>b6 &amp; b7C</b> Northern &amp; Central California Northern Nevada</p>	<p><b>Provider:</b> Verizon Wireless</p> <p><b>Date:</b> 10/2/20</p> <p><b>Time:</b> 1548</p> <p><b>Subject:</b> Correspondence from <b>b6 &amp; b7C</b> of Verizon Wireless detailing "Commercial Power Failure" for Slater Butte Equipment, 9/8/20</p>
<p>09-08-2020 05:41:57 Slater_1 Comm_Pwr [TS] Fail critical Bistate_27 0 NVA North Valley Slater 1</p> <p>09-08-2020 05:41:57 Slater_1 MC01_AC_F [TS] Alarm critical Bistate_21 0 NVA North Valley Slater 1</p> <p>09-08-2020 05:41:57 Slater_1 Gea [TS] Generator Running critical Bistate_29 0 NVA North Valley Slater 1</p> <p><b>b6 &amp; b7C</b> CalOES / Public Safety Communications Sacramento Microwave Center</p> <p><b>b6 &amp; b7C</b></p>	<p><b>Provider:</b> CalOES</p> <p><b>Date:</b> 10/2/20</p> <p><b>Time:</b> 1612</p> <p><b>Subject:</b> Correspondence from <b>b6 &amp; b7C</b> of CalOES detailing power failure log for equipment on Slater Butte, 9/8/20</p>



United States Department of Agriculture  
Forest Service  
**Exhibit 7**

Case Name <b>Slater</b>	Case/File Number <b>20-05-MBBKOWI</b>
Case Type <b>Wildland Fire</b>	Date of Incident <b>9/8/2020</b>

 <b>USDA Forest Service Law Enforcement &amp; Investigations</b>		<b>MEMORANDUM OF INTERVIEW</b> <i>(Reference FSH 5309.11)</i> <i>Form 5309-19 (04-03-2011)</i>		<b>1. CASE INCIDENT NUMBER</b> <b>20-05-MBBKOWI</b>	
<b>2. NATURE OF INVESTIGATION</b> <b>Wildland Fire</b>					
<b>3. NAME OF PERSON INTERVIEWED (Last, First, Middle)</b> b6 & b7C		<b>4. SOCIAL SEC. NO.</b> b6 & b7C	<b>5. DOB</b> b6 & b7C	<b>6. SEX</b> M	
<b>7. HOME ADDRESS (St., City, State, ZIP Code)</b> b6 & b7C		<b>8. DRIVER'S LIC. NO.</b>	<b>9. PHONE (Home/Work/Cell)</b> b6 & b7C		
<b>10. EMPLOYMENT (Organization and Location)</b> Grey Eagle Mine			<b>11. PHONE (Home/Work/Cell)</b>		
<b>12. LOCATION OF INTERVIEW</b> Telephone		<b>13. NAME OF OFFICER CONDUCTING INTERVIEW</b> b6 & b7C			
<b>14. OTHER PRESENT</b>					
		<b>15. STARTED</b>		<b>ENDED</b>	
		Date	Time	Date	Time
		9-8-20	1430		
<b>16. REMARKS</b>					
<p>b6 &amp; b7C reports that he was arriving at the Grey Eagle Mine located off Indian Creek Road at 1000 Luther Gulch Rd outside Happy Camp that morning. b6 &amp; b7C at the mine.</p> <p>b6 &amp; b7C stated that when he got out to open the gate, he could see smoke above the mine, back in the area of Thompson Creek. A second employee called b6 &amp; b7C and informed him he could see flames on the hill side above the mine.</p> <p>b6 &amp; b7C contacted dispatch to report the fire and advise that access to the fire would be through the mine. YICC dispatch records indicate b6 &amp; b7C called at 07:03 hours. b6 &amp; b7C then began to prepare the mine water treatment plant for the approaching flames.</p> <p>At approximately 0815 b6 &amp; b7C stated that an employee of Pacific Power, b6 &amp; b7C arrived at the mine in order to access the power lines that went through the property. b6 &amp; b7C is friends with b6 &amp; b7C and said that b6 &amp; b7C removed the fuses from the power line and disabled the power to the area.</p> <p>b6 &amp; b7C eventually abandoned the mine water treatment plant and joined the Happy Camp Fire Department as it provided structure protection in Indian Creek.</p>					
<b>17. OFFICER'S SIGNATURE</b> b6 & b7C		<b>18. WITNESS SIGNATURE (If Applicable)</b>			



United States Department of Agriculture  
Forest Service  
**Exhibit 8**

Case Name	Case/File Number
Slater	20-05-MBBKOWI
Case Type	Date of Incident
Wildland Fire	9/8/2020

Mon Sep 7 2020

Date: 9/7/20

Subject: Fire Weather Forecast received by Yreka Interagency Communications Center from National Weather Service.

.DISCUSSION...It will be hot and dry with poor to moderate humidity recoveries into Wednesday. An upper trough now moving into the intermountain states will produce gusty north winds and very dry humidities east of the Cascades. As the trough continues south, winds will shift to the east, and a significant offshore wind event will begin tonight, lasting into Wednesday morning. Dry and windy conditions are expected across the entire region with poor overnight recoveries, creating critical fire weather conditions into Wednesday. Winds will weaken Wednesday, but humidities will remain very low, and critical fire weather conditions will persist over much of the area through Wednesday afternoon. Hot and dry conditions will continue through the rest of the week, but winds will be lighter.

ECC002-081100-  
Western Klamath NF...Scott and Shasta Valleys IS and westward-  
331 PM PDT Mon Sep 7 2020

...RED FLAG WARNING IN EFFECT UNTIL 5 PM PDT WEDNESDAY...

.Tonight...Clear. Lows 50-60. Maximum humidity 30-45 percent. Windy. North winds 10 to 20 mph...shifting to the northeast 15 to 30 mph after midnight. Lightning activity level 1. Chance of wetting rain 0 percent.

.TUESDAY...Sunny. Highs 85-95 valleys and highs 70-75 ridges. Minimum humidity 5-10 percent. Windy. East winds 20 to 30 mph. Lightning activity level 1. Chance of wetting rain 0 percent.

.TUESDAY NIGHT...Clear. Lows 55-60. Maximum humidity 15-25 percent. Windy. East winds 10 to 20 mph increasing to 15 to 30 mph after midnight. Lightning activity level 1. Chance of wetting rain 0 percent.

.WEDNESDAY...Sunny. Highs 90-95 valleys and highs 75-80 ridges. Minimum humidity 5-10 percent. East winds 10 to 20 mph. Lightning activity level 1. Chance of wetting rain 0 percent.

.EXTENDED...

.WEDNESDAY NIGHT...Clear. Lows 55 to 60. Light winds.

.THURSDAY...Clear. Highs 85 to 95. Light winds.

.FRIDAY THROUGH SATURDAY...Clear. Lows 55 to 60. Highs 80 to 90. Light winds.


.SUNDAY...Clear. Lows 55 to 60. Highs 80 to 90.

.MONDAY...Mostly clear. Lows 55 to 60. Highs 80 to 90.



United States Department of Agriculture  
Forest Service  
**Exhibit 9**

Case Name <b>Slater</b>	Case/File Number <b>20-05-MBBKOWI</b>
Case Type <b>Wildland Fire</b>	Date of Incident <b>9/8/2020</b>

United States Department of Agriculture Forest Service		NAME OF PERMITTEE <b>Pacific Power &amp; Light Co.</b>	PERMIT NUMBER <b>Pover</b>
 <b>SPECIAL USE PERMIT</b> Act of June 4, 1897, or February 11, 1901 This permit is revocable and nontransferable		DATE OF PERMIT <b>DEC 28 1970</b>	FILE CODE <b>2750</b>
REGION <b>5</b>	STATE <b>California</b>	FOREST <b>Klamath</b>	RANGER DISTRICT <b>Happy Camp</b>

Permission is hereby granted to Pacific Power & Light Company  
of 920 S.W. Sixth Avenue, Portland, Oregon 97204  
hereinafter called the permittee, to use subject to the conditions set out below, the following described lands or improvements:

Right-of-way Twenty (20) feet in width and Seventeen Thousand Six Hundred Sixty-four (17,664) feet in length across lands of the United States within the Klamath National Forest in portions of Sections 1, 3, 10, 11, 14, 15, 16, and 21, T. 16 N., R. 7 E., and Sections 7, 8, 13, 16, 26, and 35, T. 17 N., R. 7 E., N. D. B. & M.

It is more particularly shown on Map Drawing No. PE-25554, (consisting of two sheets entitled: "Pacific Power & Light Company, application for consolidation of special use permits in the Happy Camp Ranger District, Distribution Line Across Lands under jurisdiction of the Klamath National Forest") which is attached hereto and is hereby made a part of this permit.

This permit covers 8.108 acres and/or 3.358 miles and is issued for the purpose of construction, operating and maintaining thereon single phase distribution lines of various voltages of not to exceed 12.5 K.V. The lines will be of standard construction in accordance with G.O. #99 of the California Public Utilities Commission, using treated fir and cedar poles, together with necessary cross-arms, pins, bolts, guys, anchors, transformers and conductors.

Service supply will be from the interconnected transmission system of Pacific Power & Light Company.

The exercise of any of the privileges granted hereby constitutes acceptance of all the conditions of this permit.

1. In consideration for this use, the permittee shall pay to the Forest Service, U.S. Department of Agriculture, the sum of Eighty Dollars (\$ 80.00) for the period from January 1, 19 71, to December 31, 19 71, and thereafter annually on January 1 Eighty Dollars (\$ 80.00)

Provided, however, Charges for this use may be made or readjusted whenever necessary to reflect charges on a basis commensurate with the value of use authorized by this permit.



United States Department of Agriculture  
Forest Service  
**Exhibit 9**

Case Name <b>Slater</b>	Case/File Number <b>20-05-MBBKOWI</b>
Case Type <b>Wildland Fire</b>	Date of Incident <b>9/8/2020</b>

2. Construction or occupancy and use under this permit shall begin within \_\_\_\_\_ months, and construction, if any, shall be completed within \_\_\_\_\_ months, from the date of the permit. This use shall be actually exercised at least 365 days each year, unless otherwise authorized in writing.

3. Development plans; layout plans; construction, reconstruction, or alteration of improvements; or revision of layout or construction plans for this area must be approved in advance and in writing by the forest supervisor. Trees or shrubbery on the permitted area may be removed or destroyed only after the forest officer in charge has approved, and has marked or otherwise designated that which may be removed or destroyed. Timber cut or destroyed will be paid for by the permittee as follows: Merchantable timber at appraised value; young-growth timber below merchantable size at current damage appraised value; provided that the Forest Service reserves the right to dispose of the merchantable timber to others than the permittee at no stumpage cost to the permittee. Trees, shrubs, and other plants may be planted in such manner and in such places about the premises as may be approved by the forest officer in charge.

4. The permittee shall maintain the improvements and premises to standards of repair, orderliness, neatness, sanitation, and safety acceptable to the forest officer in charge.

5. This permit is subject to all valid claims.

6. The permittee, in exercising the privileges granted by this permit, shall comply with the regulations of the Department of Agriculture and all Federal, State, county, and municipal laws, ordinances, or regulations which are applicable to the area or operations covered by this permit.

7. The permittee shall take all reasonable precautions to prevent and suppress forest fires. No material shall be disposed of by burning in open fires during the closed season established by law or regulation without a written permit from the forest officer in charge or his authorized agent.

8. ~~The permittee shall exercise diligence in protecting from damage, destruction and removal of the United States covered by and used in connection with this permit, and shall pay the United States for any damage resulting from negligence or from the violation of the terms of this permit or of any law or regulation applicable to the national forests by the permittee, or by any agents or employees of the permittee acting within the scope of their agency or employment.~~

9. The permittee shall fully repair all damage, other than ordinary wear and tear, to national forest roads and trails caused by the permittee in the exercise of the privilege granted by this permit.

10. No Member of or Delegate to Congress or Resident Commissioner shall be admitted to any share or part of this agreement or to any benefit that may arise herefrom unless it is made with a company for its general benefit.

11. Upon abandonment, termination, revocation, or cancellation of this permit, the permittee shall remove within a reasonable time all structures and improvements except those owned by the United States, and shall restore the site, unless otherwise agreed upon in writing or in this permit. If the permittee fails to remove all such structures or improvements within a reasonable period, they shall become the property of the United States, but that will not relieve the permittee of liability for the cost of their removal and restoration of the site.

12. This permit is not transferable. If the permittee through voluntary sale or transfer, or through enforcement of contract, foreclosure, tax sale, or other valid legal proceeding shall cease to be the owner of the physical improvements other than those owned by the United States situated on the land covered by this permit and is unable to furnish adequate proof of ability to redeem or otherwise reacquire the said improvements, this permit shall be subject to cancellation. But if the person to whom the said improvements shall have been transferred in other manner above provided is qualified as a permittee and is willing that his future occupancy of the premises shall be subject to such new conditions and stipulations as existing or prospective circumstances may warrant, his continued occupancy of the premises may be authorized by permit to him if, in the opinion of the issuing officer or his successor, issuance of a permit is desirable and in the public interest.

13. In case of change of address, the permittee shall immediately notify the forest supervisor.

14. The temporary use and occupancy of the premises and improvements herein described may be sublet by the permittee to third parties only with the prior written approval of the forest supervisor. The permittee shall continue to be responsible for compliance with all conditions of this permit by persons whom such premises may be sublet.

15. This permit may be terminated upon breach of any of the conditions herein or at the discretion of the regional forester or the Chief, Forest Service.

16. In the event of any conflict between any of the preceding printed clauses or any provision thereof and any of the following clauses or any provisions thereof, the preceding printed clauses will control.

17. This permit is accepted subject to the conditions set forth above and to conditions 18 attached hereto and made a part of this permit.

34

\*constructed under Special Use Permits, cases dated 1/3/50, 8/11/50, 10/27/50, 6/23/52, and 9/6/55.

DATE	SIGNATURE OF ISSUING OFFICER	TITLE



United States Department of Agriculture  
Forest Service

Exhibit 9

Case Name	Case/File Number
Slater	20-05-MBBKOWI
Case Type	Date of Incident
Wildland Fire	9/8/2020

SUPPLEMENTAL CONDITIONS

1991 POWER PERMIT (Under 33 KV)

18. The permittee shall pay the United States for any damage resulting from this use.
19. This permit confers no rights upon the permittee to use this right-of-way for purposes other than for the constructing, maintaining and operating of a transmission line thereon.
20. Unless sooner terminated or revoked by the Chief, Forest Service, or his authorized representative, this permit shall expire and become void at the expiration of Five (5) years from the date of its issuance (date of signing by issuing officer), but a new permit to occupy and use the same National Forest land may be granted, provided the permittee will comply with the then existing laws and regulations governing the occupancy and use of National Forest lands for power purposes, and shall have notified the Regional Forester not less than two (2) years prior to said date that such new permit is desired.
21. The transmission line or lines authorized by this permit or any part thereof, whether constructed or unconstructed, may be abandoned or surrendered by the permittee upon written approval of the Forest Officer issuing this permit, his successor, or his authorized representative after a finding by the Forest Officer that such abandonment or surrender will not be contrary to the public interest, and after the fulfillment by the permittee of all requirements of the issuing officer and the terms and conditions of this permit in respect to rental payment or otherwise, existing at the time of such approval.
22. Violation of any of the conditions of this permit shall be sufficient cause for its revocation; Provided, however, that this permit will not be deemed to be terminated except upon formal revocation thereby by the Chief, Forest Service, or his authorized representative, and not until the permittee shall have had a reasonable time--not to exceed ninety (90) days--within which to show cause why such revocation should not be made.



United States Department of Agriculture  
Forest Service

Exhibit 9

Case Name	Case/File Number
Slater	20-05-MBBKOWI
Case Type	Date of Incident
Wildland Fire	9/8/2020

23. The permittee shall provide, whenever requested by the Forest Officer in charge, a way across the land covered by this permit for the free ingress or egress of Forest Officers and for users of National Forest land and purchasers of National Forest products.
24. The permittee shall allow officers and employees of the United States Free and unrestricted access in, through and across the said project and project works in the performance of their official duties, and shall allow the Forest Service, without charge, to construct, or permit to be constructed, in, through and across the said project, railroads, chutes, roads, trails, conduits and other means of transportation not inconsistent with the enjoyment of said project by the permittee for the purpose herein set forth.
25. The permittee shall clear designated portions of the power line right-of-way, and keep them clear as required by the Forest Officer in charge; shall trim all branches of trees in contact or near contact with the line, and on or adjacent to the right-of-way shall remove all dead snags and all trees leaning toward the line, which are deemed hazardous or might fall in contact with the line; and shall observe such other precautions against fire as may be required by the Forest Officer in charge; all waste material shall be burned or otherwise disposed of to the satisfaction of the Forest Officer in charge. The clearing width shall be restricted to that necessary for safe transmission unless the specific permission of the Forest Supervisor for a greater clearing width is obtained.
26. A fire prevention and control plan adequate in the judgment of the Forest Supervisor to the risks and hazards of this use shall be prepared and placed in effect by the permittee. This plan shall provide for necessary "standby" fire control equipment, and for the current disposal of trash. The permittee shall do everything reasonably within its power and shall require its employees, contractors and employees of contractors to do everything reasonably within their power, both independently and upon request of officers of the Forest Service, or other agents of the United States, to prevent and suppress fires on or near the lands to be occupied under this permit. The permittee shall pay the United States the suppression costs and damages resulting from any fires caused by the construction, operation or maintenance of the transmission line authorized by this permit.



United States Department of Agriculture  
Forest Service  
**Exhibit 9**

Case Name	Case/File Number
Slater	20-05-MBBK0WI
Case Type	Date of Incident
Wildland Fire	9/8/2020

27. The transmission line shall be designed and constructed in accordance with the accepted standards and specifications for transmission lines of similar voltages, capacity and purpose as set forth in the Rules and Regulations of the California Public Utilities Commission, its General Order No. 95 or subsequent orders it may issue before construction takes place. The permittee shall place and maintain suitable structures and devices to reduce to a reasonable degree the liability of contact between its power line and telegraph, telephone, signal or other power lines heretofore constructed and not owned by the permittee, and shall also place and maintain suitable structures and devices to reduce to a reasonable degree the liability of any structures or wires falling and obstructing traffic or endangering life on highways and roads, in a manner satisfactory to the Forest Service.
28. The permittee agrees that no substantial change or alteration shall be made in the design, location, construction, voltage, or capacity of this line until application for such change shall have been submitted to and approved by the Forest Officer issuing this permit, his successor, or his authorized representative.
29. The scenic and aesthetic values of the right-of-way and adjacent land shall be protected as far as possible consistent with the authorized use, during construction, operation and maintenance of the line.
30. The permittee shall make provision, or shall bear the reasonable cost (as determined by the Regional Forester) of making provision, for avoiding inductive interference between any project transmission line or other project work constructed, operated, or maintained under this permit, and any radio installation, telephone line, or other communication facility installed or constructed before construction of such project transmission line or other project work, and owned, operated or used by the Forest Service in administering the National Forests and land under its jurisdiction. The foregoing provisions of this article shall also relate to any radio installation, telephone line, or other communication facility installed or constructed by the United States after construction of such project transmission line or other project work. None of the provisions of this article are intended to relieve the permittee from any responsibility or requirement which may be imposed by other lawful authority for avoiding or eliminating inductive interference.



United States Department of Agriculture  
Forest Service

Exhibit 9

Case Name	Case/File Number
Slater	20-05-MBBKOWI
Case Type	Date of Incident
Wildland Fire	9/8/2020

31. That the line or lines to be constructed, maintained and operated under the permit are not and will not be owned, leased, trusteed, possessed or controlled by any device or in any manner so that they form, or will form part of, or in any way effect, any combination in the form of an unlawful trust, and are not, and will not be in unlawful restraint of trade with foreign nations or between two or more States, or within any one State, in the transmission of electric power.
32. That in respect to the regulation by any competent public authority of the service to be rendered by the permittee, or of the price to be charged therefor, and in respect to any purchase or taking over of the properties or business of the permittee, or any part thereof, by the United States or by any State within which such properties are situated or business carried on in whole or in part, or by any municipal corporation of such State, no value whatsoever shall at any time be assigned to or claimed for the permit, or for the occupancy or use of National Forest lands granted thereunder, nor shall the permit of such occupancy and use ever be estimated or considered as property upon which the permittee shall be entitled to earn or receive any return, income, price, or compensation whatsoever.
33. During the performance of this permit the permittee agrees:
- In connection with the performance of work under this permit, including construction, maintenance and operation of the facility the permittee shall not discriminate against any employee or applicant for employment because of race, color, creed, or national origin.
  - The permittee and his employees shall not discriminate by segregation or otherwise against any person on the basis of race, color, creed, or national origin by curtailing or refusing to furnish accommodations, facilities, services, or use privileges offered to the public generally.
  - The permittee shall include and require compliance with the above non-discrimination provisions in any sub-contract made with respect to the operations under this permit.
  - Signs setting forth this policy of non-discrimination to be furnished by the Forest Service will be conspicuously displayed at the public entrances to the premises, and at other exterior or interior locations as directed by the Forest Service.



United States Department of Agriculture  
Forest Service  
**Exhibit 9**

Case Name	Case/File Number
Slater	20-05-MBBKOWI
Case Type	Date of Incident
Wildland Fire	9/8/2020

34. This permit shall have no force and effect until the permittee has signified its acceptance of its provisions and conditions by signing below and returning the duplicate copy to the Regional Forester  
U. S. Forest Service, 630 Sansome Street, San Francisco, California 94111

UNITED STATES FOREST SERVICE

By Paul M. Yurgen  
Acting Regional Forester  
(title)

Dec 29 1970  
(Date)

\*\*\*\*\*

We have read the foregoing permit and Pacific Power & Light Company  
agrees to accept and abide by  
its terms and conditions

PACIFIC POWER & LIGHT COMPANY

By Robert A. Stitt  
VICE-PRESIDENT

DATED:  
Jan 15 1971

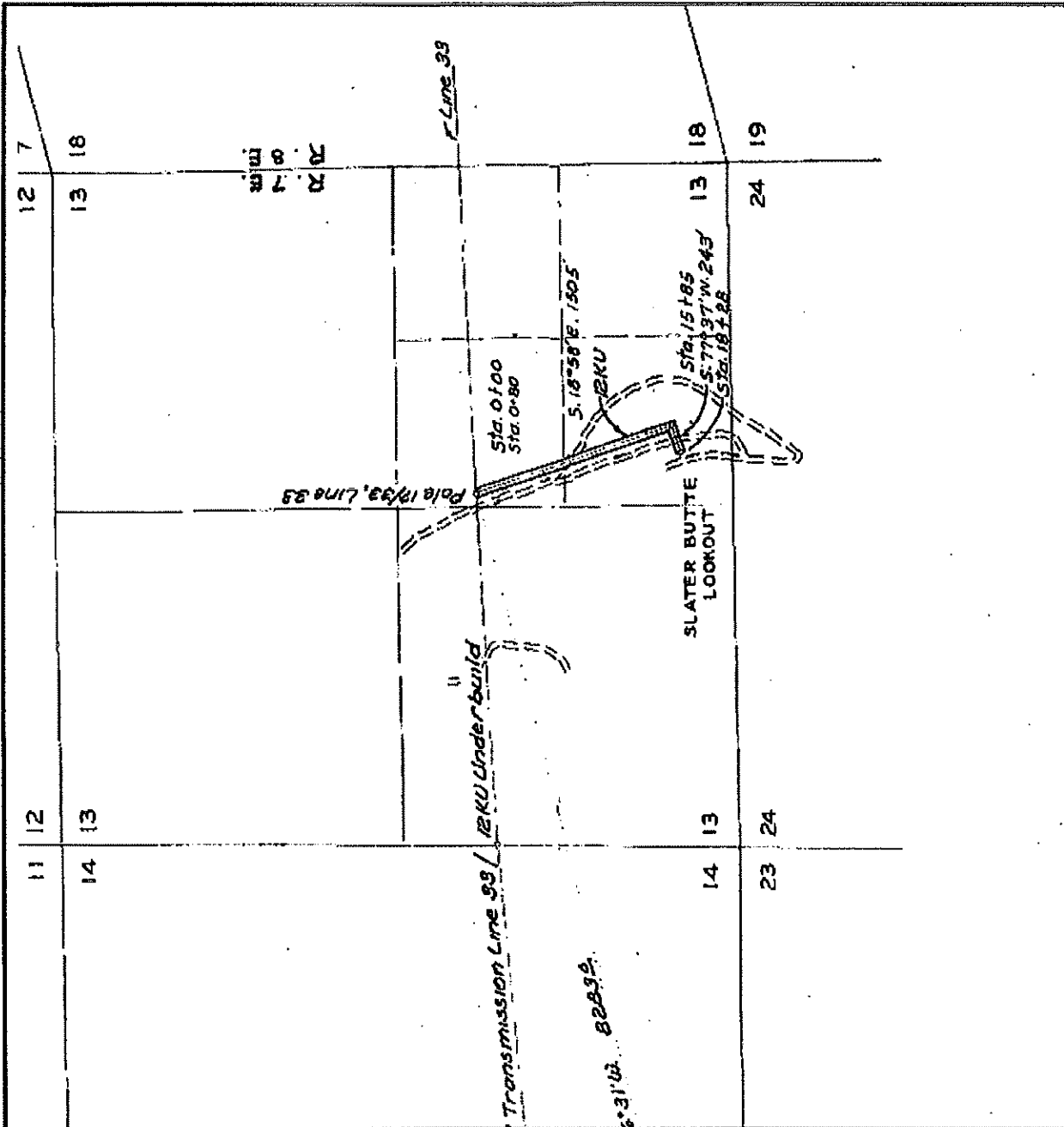
WITNESSED BY:  
W. S. Thompson

ASSISTANT SECRETARY  
(title)



United States Department of Agriculture  
Forest Service  
**Exhibit 9**

Case Name <b>Slater</b>	Case/File Number <b>20-05-MBBK0W1</b>
Case Type <b>Wildland Fire</b>	Date of Incident <b>9/8/2020</b>





United States Department of Agriculture  
Forest Service  
**Exhibit 10**

Case Name <b>Slater</b>	Case/File Number <b>20-05-MBBKOWI</b>
Case Type <b>Wildland Fire</b>	Date of Incident <b>9/8/2020</b>

PP&L REF: 3-CO-81  
RS-2700-4818/911

USDA - Forest Service  <b>SPECIAL USE PERMIT for Electric Powerlines</b>  (Ref: FSR 3709.11) Federal Land Policy and Management Act of October 21, 1976  This permit is revocable and nontransferable.	Holder No.	Issue Date	Expir. Date
	4029-01	12/ 28/ 92	12/31/12
	Type Site	Authority	Auth. Type
	643	676	20
	Region	Forest	District
	05	05	51.82.55
State	County	Cong. Dist.	
06	093	14	

PACIFIC POWER AND LIGHT COMPANY, 220 S. W. Sixth Avenue, Portland, OR 97204, (hereafter called the holder) is hereby authorized to use National Forest lands, for the construction, operation and maintenance of a 62 kV powerline (with some 12 Kv underbuilds and extensions) within the Klamath National Forest, subject to the general provisions, items 1 to 21 on pages 2 to 4; and to the special provisions, items 22 to 31 on pages 4 to 7, attached hereto and made a part of this permit. The location of this use is shown on Exhibits A and B, attached to and made part of this permit.

Length in: <sup>29.51</sup> 29.91 miles or 157,923 feet x variable width = 217.21 acres.

Construction or occupancy under this permit shall begin within \_\_\_\_\_ months and construction shall be completed within \_\_\_\_\_ months.

The holder shall pay annually in advance a sum determined by the Forest Service to be the fair market value of the use granted by this authorization. The initial payment is set at \$2,886.14 for the remainder of the 1993 calendar year. Annual payments for each subsequent calendar year may be adjusted using the Implicit Price Deflator-Gross National Product Index (IPD-GNP), or other factor selected by the Forest Service, to reflect more nearly the current fair market value of the use. The annual fee may also be adjusted annually to reflect the increase or decrease of acreage of National Forest land authorized under this permit. At intervals to be determined by certain changes in the indexes used to establish the linear rights-of-way fee schedule, the fee shall be reviewed and adjusted as necessary to assure that it is commensurate with the value of the rights and privileges authorized. Failure of the holder to make the annual payment, late payment charge, and any other charges when due shall cause this authorization to terminate.

Pursuant to the Federal Claims Collection Act of 1966, as amended, 31 USC 3717, et seq., and regulations at 4 CFR 102.13, an interest charge shall be assessed on any payment not made by the payment due date.

Interest shall be assessed using the most current rate prescribed by the United States Department of Treasury Financial Requirements Manual (TFRM-6-8020.20). Interest shall accrue from the date the fee payment was due. In addition, the cost of processing and handling the overdue payment shall be added to the amount due.

PACIFIC POWER & LIGHT COMPANY  
PORTLAND OFFICE

**COPY**

PROP. MANAG. DEPT.
PLANNING SECTION
CLASSIFIED _____
DATE _____
BY _____
NO. _____
DATE _____

94-5104



United States Department of Agriculture  
Forest Service

**Exhibit 10**

Case Name	Case/File Number
Slater	20-05-MBBKOWI
Case Type	Date of Incident
Wildland Fire	9/8/2020

A penalty of 6 percent per year shall be assessed on any fee amount overdue in excess of 90 days from the due date of the first billing.

Payments will be credited on the date received by the designated collection officer or deposit location. If the due date for any of the above payments or fee calculation statements fall on a nonworkday, the interest and penalty charges shall not apply until the close of business of the next workday.

**GENERAL PROVISIONS**

1. Development plans; layout plans; construction, reconstruction, or alteration of improvements; or revision of layout or construction plans for this area must be approved in advance and in writing by the Forest Supervisor.

2. No timber shall be cut or destroyed during construction of the powerline without first obtaining permission from the Forest Service. The holder shall clear only the minimum area required for safe powerline use. All timber cut, destroyed or injured shall be paid for at current stumpage rates applicable to the date by the Forest Service of similar timber in the National Forest.

3. The holder shall keep the area beneath the powerlines cleared and shall trim all branches in contact or near contact with the line. All trees, live or dead, deemed by the holder to be hazardous or which might fall in contact with the line, whether on or adjacent to the right-of-way, shall be removed by the holder; Provided, however, that permission to do so must first be obtained from the Forest Service.

4. All waste material from constructing or maintaining the line shall be burned or otherwise disposed of as directed by the Forest Service. However, no material shall be disposed of by burning during any closed season established by law or regulation without a written permit from the Forest Service.

5. The holder shall protect the scenic and esthetic values of the right-of-way and the adjacent land as far as possible consistent with the authorized use, during the construction, operation, and maintenance of the facility.

6. The holder shall be responsible for prevention and control of soil erosion and gulying on Government lands covered by this permit and lands adjacent thereto resulting from construction or maintenance of the powerlines; and shall revegetate with grass or herbaceous plants all ground where the soil has been exposed; and shall construct and maintain such preventive works to accomplish this result as prescribed in the erosion control plan attached, and made a part of this permit.

7. The powerlines shall be designed and constructed in accordance with accepted State standards and specifications for powerlines of similar voltage, capacity, and purpose. The holder shall place and maintain suitable structures and devices to reduce to a reasonable degree the likelihood of contact between its powerlines and telegraph, telephone, signal, or other powerlines heretofore constructed and not owned by the holder, and shall also place and maintain such powerlines and devices underground, unless clearly shown to be impractical, in a manner satisfactory to the Forest Service.

8. The holder shall make provision, or pay the reasonable cost of making provision for avoiding inductive or conductive interference between any power facility or other works constructed, operated, or maintained by it and authorized under the permit, and any radio installation, telephone line, or other communication facilities existing when the permit is authorized or any such installation, line or facility thereafter constructed or operated by the United States or any agency thereof. This provision shall not relieve the holder from any responsibility or requirement which may be imposed by other lawful authority for avoiding or eliminating inductive or conductive interference.

94 S104



United States Department of Agriculture  
Forest Service  
**Exhibit 10**

Case Name <b>Slater</b>	Case/File Number <b>20-05-MBBKOWI</b>
Case Type <b>Wildland Fire</b>	Date of Incident <b>9/8/2020</b>

8. The holder shall protect all Government and other telephone, telegraph, and power lines at crossings of and at all places in proximity to the holder's powerlines or lines; and shall maintain said powerlines or lines in such a manner as not to menace life or property.

10. The holder shall maintain the improvements and premises to standards of repair, orderliness, neatness, sanitation, and safety acceptable to the Forest Service.

11. The holder, in exercising the privileges granted by this permit, shall comply with the regulations of the Department of Agriculture and all Federal, State, county, and municipal laws, ordinances, or regulations which are applicable to the area or operations covered by this permit.

12. The holder shall do everything reasonably within its power and shall require its employees, contractors, and employees of contractors to do everything reasonably within their power, both independently and upon request of the Forest Service, to prevent and suppress fires on the lands to be occupied under this permit.

13. The temporary use and occupancy of the premises and improvements herein described may be sublet by the holder to third parties only with the prior written approval of the Forest Supervisor, but the holder shall continue to be responsible for compliance with all conditions of this permit by persons to whom such premises may be sublet.

14. This permit is subject to all valid claims.

15. No Member of or Delegate to Congress or Resident Commissioner shall be admitted to any share or part of this agreement or to any benefit that may arise herefrom unless it is made with a corporation for its general benefit.

16. Upon abandonment, termination, revocation, or cancellation of this permit, the holder shall remove within a reasonable time all structures and improvements except those owned by the United States, and shall restore the site, unless otherwise agreed upon in writing or in this permit. If the holder fails to remove all such structures or improvements within a reasonable period, they shall become the property of the United States, but that will not relieve the holder of liability for the cost of their removal and restoration of the site.

17. This permit is not transferable. If the holder through voluntary sale or transfer, or through enforcement of contract, foreclosure, tax sale, or other valid legal proceeding shall cease to be the owner of the physical improvements other than those owned by the United States situated on the land described in this permit and is unable to furnish adequate proof of ability to redeem or otherwise reestablish title to said improvements, this permit shall be subject to cancellation. But if the person to whom title to said improvements shall have been transferred in either manner provided is qualified as a holder and is willing that future occupancy of the premises shall be subject to such new conditions and stipulations as existing or prospective circumstances may warrant, continued occupancy of the premises by said person may be authorized if, in the opinion of the issuing officer or issuing officer's successor, issuance of a permit is desirable and in the public interest.

18. This permit may be terminated upon breach of any of the conditions herein by the issuing officer or at the discretion of the Regional Forester or the Chief, Forest Service; provided, the holder shall have had a reasonable time -- not to exceed ninety (90) days -- within which to show cause why such termination should not be made.

19. This permit confers no rights upon the holder to use this National Forest land for purposes other than constructing, maintaining, and operating powerlines and appurtenant access roads thereon.

20. The holder shall allow officers and employees of the United States free and unrestricted access in, through and across the said project and project works in the performance of their official duties and shall allow the Forest Service, without charge, to construct or permit to be constructed in, through, and across the said

94-5104



United States Department of Agriculture  
Forest Service

**Exhibit 10**

Case Name	Case/File Number
Slater	20-05-MBBKOWI
Case Type	Date of Incident
Wildland Fire	9/8/2020

project, railroads, chutes, roads, trails, conduits, and other means of transportation not inconsistent with the enjoyment of said project by the holder for the purpose herein set forth.

21. Appeal of any provisions of this authorization or any requirements thereof shall be subject to the appeal regulations at 38 CFR 251, or revisions thereto.

**SPECIAL PROVISIONS**

22. During the performance of this permit, the holder agrees:

a. In connection with the performance of work under this permit, including construction, maintenance, and operation of the facility, the holder shall not discriminate against any employee or applicant for employment because of race, color, religion, sex, national origin, age or handicap. [Ref. Title VII of the Civil Rights Act of 1964 as amended].

b. The holder and its employees shall not discriminate by segregation or otherwise against any person on the basis of race, color, religion, sex, national origin, age or handicap, by curtailing or refusing to furnish accommodations, facilities, services, or use privileges offered to the public generally. [Ref. Title VI of the Civil Rights Act of 1964 as amended, Section 504 of the Rehabilitation Act of 1973, Title IX of the Education Amendments, and the Age Discrimination Act of 1975].

c. The holder shall include and require compliance with the above nondiscrimination provisions in any subcontract made with respect to the operations under this permit.

d. Signs setting forth this policy of nondiscrimination to be furnished by the Forest Service will be conspicuously displayed at the public entrance to the premises, and at other exterior or interior locations as directed by the Forest Service.

e. That the Forest Service shall have the right to enforce the foregoing nondiscrimination provisions by suit for specific performance or by any other available remedy under the laws of the United States or the State in which the breach or violation occurs.

23. The holder shall indemnify the United States against any liability for damage to life or property arising from the occupancy or use of National Forest lands under this permit.

24. Avalanches, rising waters, high winds, falling limbs or trees, and other hazards are natural phenomena in the forest that present risks which the holder assumes. The holder has responsibility of inspecting the site, lot, right-of-way and immediate adjoining area for dangerous trees, hanging limbs, and other evidence of hazardous conditions and, after securing permission from the Forest Service, of removing such hazards.

25. The holder shall protect, in place, all public land survey monuments, private property corners, and Forest boundary markers. In the event that any such land markers or monuments are destroyed in the exercise of the privileges authorized by this permit, depending on the type of monument destroyed, the holder shall see that they are reestablished or referenced in accordance with (1) the procedures outlined in the 'Manual of Instructions for the Survey of the Public Land of the United States,' (2) the specifications of the county surveyor, or (3) the specifications of the Forest Service.

Further, the holder shall cause such official survey records as are affected to be amended as provided by law. Nothing in this clause shall relieve the holder's liability for the willful destruction or modification of any Government survey marker as provided at 18 U.S.C. 1668.

94 S104



United States Department of Agriculture  
Forest Service

**Exhibit 10**

Case Name	Case/File Number
Slater	20-05-MBBK0W1
Case Type	Date of Incident
Wildland Fire	9/8/2020

26. Pesticides may not be used to control undesirable woody and herbaceous vegetation, aquatic plants, insects, rodents, trash fish, etc., without the prior written approval of the Forest Service. A request for approval of planned uses of pesticides will be submitted annually by the holder on the due date established by the authorized officer. The report will cover a 12-month period of planned use beginning 3 months after the reporting date. Information essential for review will be provided in the form specified. Exceptions to this schedule may be allowed, subject to emergency request and approval, only when unexpected outbreaks of pests require control measures which were not anticipated at the time an annual report was submitted.

Only those materials registered by the U.S. Environmental Protection Agency for the specific purpose planned will be considered for use on National Forest System lands. Label instructions will be strictly followed in the application of pesticides and disposal of excess materials and containers.

27. With respect to each overhead powerline or overhead segment of powerline authorized, the holder shall be held liable for all injury, loss, or damage, including fire suppression costs, directly or indirectly resulting from or caused by the holder's use and occupancy of the area covered by permit, regardless of whether the holder is negligent or otherwise at fault, provided that the maximum liability without fault shall not exceed \$1,000,000 for any one occurrence and provided further that the holder shall not be liable without fault when such injury, loss, or damage results wholly, or in part, from a negligent act of the United States, or an act of a third party not involving the facilities of the holder.

Liability for injury, loss, or damage, including fire suppression costs, in excess of the specified maximum, shall be determined by the laws governing ordinary negligence.

Modification of this clause to remove holder liability for criminal acts of third parties is anticipated. When and if approval for such modification is authorized by the Chief, Forest Service, this permit, upon request of the holder, will be modified accordingly.

The holder does not, by executing this permit, waive any rights which it might otherwise have to contest the validity or legal enforceability of the regulations, or any portions thereof, pursuant to which the right-of-way herein is granted.

28. With respect to each underground line or segment of underground line authorized, the holder shall exercise diligence in protecting from damage the land and property of the United States covered by and used in connection with this permit, and shall pay the United States for any damage resulting from negligence or from the violation of the terms of this permit or of any law or regulation applicable to the National Forest by the holder, or by any agents or employees of the holder acting within the scope of their agency or employment.

29. If, prior to or during excavation work, items of archaeological, paleontological, or historic value are reported or discovered, or an unknown deposit of such items is disturbed, the holder will immediately cease excavation in the area so affected. Holder will then notify the Forest Service and will not resume excavation until written approval is given by the authorized officer.

If it is deemed necessary or desirable, the Forest Service may require the holder to have performed recovery, excavation, and preservation of the site and its artifacts at the holder's expense. At the option of the Forest Service, this authorization may be terminated at no liability by the United States when such termination is deemed necessary or desirable to preserve or protect archaeological, paleontological, or historic sites and artifacts.

30. This permit is granted with the express understanding that should future location of Government improvements, road rights-of-way or utilization of National Forest resources require the relocation of the holder's improvements, such relocation will be done by, and at the expense of the holder within a reasonable time as specified by the authorized officer.

94-5104



United States Department of Agriculture  
Forest Service  
**Exhibit 10**

Case Name	Case/File Number
Slater	20-05-MBBKOWI
Case Type	Date of Incident
Wildland Fire	9/8/2020

31. This permit shall not be exclusive; that is, the Forest Service reserves the right to use or permit others to use any part of the permitted area for any purpose, provided such use does not interfere with the rights and privileges hereby authorized.

32. This authorization is issued for a period of twenty years ending on December 31, 2012 .

If the right-of-way project or facility is still being used, operated, and maintained in accordance with the purpose of the authorization, and renewal is allowed under then existing law, and is consistent with the then existing resource management plans for the affected land, the authorized officer will renew the authorization for a term he deems to be reasonable under the circumstances.

33. Any lands described in this permit which have been withdrawn for waterpower purposes under the act of March 3, 1878, or act of June 26, 1910 [or are embraced in an application or license under the Federal Power Act of June 10, 1920], or have been withdrawn under the Reclamation Act of June 17, 1902, are subject at any time to use in connection with the development of waterpower or for reclamation purposes. This permit, therefore, is issued with the specific understanding that [1] its use shall not interfere with such waterpower or reclamation development and that [2] the permit may be, if necessary, terminated upon ninety [90] days notice when in the judgment of the Federal Energy Regulatory Commission or of the Bureau of Reclamation the lands occupied are needed for use in connection with the generation of hydroelectric power, reclamation developments, or other purposes contemplated by the act or acts under which the lands have been withdrawn. No claim shall be made against the United States or power licensees for or on account of prospective profits or for any injury or damage to properties, improvements, or operations due to such development. The holder will be allowed ninety [90] days in which to remove his improvements.

34. The holder agrees that no substantial change or alteration shall be made in the design, location, construction, voltage, or capacity of this line until application for such change shall have been submitted to and approved by the Forest officer issuing this permit, successor, or authorized representative.

35. Use of explosives:

a. Only electronic detonators shall be used for blasting.

b. In the use of explosives, the holder shall exercise the utmost care not to endanger life or property and shall comply with the requirements of the Forest Service. The holder shall be responsible for any and all damages resulting from the use of explosives and shall adopt precautions that will prevent damage to surrounding objects. The holder shall furnish and erect special signs to warn the public of blasting operations. Such signs shall be placed and maintained so as to be clearly evident to the public during all critical periods of the blasting operations, and shall include a warning statement to have radio transmitters turned off.

c. All storage places for explosives shall be marked "DANGEROUS-EXPLOSIVES." The method of storing and handling explosives shall conform to recommended procedures contained in the "Blasters Handbook," published by E. I. du Pont de Nemours and Company, and in all Federal, State, and local laws and regulations.

d. When using explosives, the holder shall adopt precautions which will prevent damage to landscape features and other surrounding objects. When directed by the Forest officer in charge, trees within an area designated to be cleared shall be left as a protective screen for surrounding vegetation during blasting operations. Trees so left shall be removed and disposed of after blasting has been completed. When necessary, and at any point of special danger, the holder shall use suitable mats or some other approved method to smother blasts.

36. The holder agrees to permit the free and unrestricted access to and upon the premises at all times for all lawful and proper purposes not inconsistent with the intent of this permit or with the reasonable exercise and enjoyment by the holder of the privileges thereof.

94 S104



United States Department of Agriculture  
Forest Service

**Exhibit 10**

Case Name	Case/File Number
Slater	20-05-MBBKOWI
Case Type	Date of Incident
Wildland Fire	9/8/2020

37. This permit supersedes special-use permits designated: Pacific Power and Light Company, Powerline, 4/17/42, 3/16/52, and 9/27/56.

This permit is accepted subject to all of its terms and conditions.

PACIFICORP, dba  
PACIFIC POWER AND LIGHT COMPANY

By *Lee D. Weislogel*  
Lee D. Weislogel - Vice President  
(Title)

*12/18/92*  
Date

USDA - FOREST SERVICE  
Klamath National Forest

By *Barbara Holder*  
BARBARA HOLDER  
Forest Supervisor

*12/28/92*  
Date

94 5104



United States Department of Agriculture  
Forest Service

**Exhibit 10**

Case Name	Case/File Number
Slater	20-05-MBBK0W1
Case Type	Date of Incident
Wildland Fire	9/8/2020

**EXHIBIT "A"**

Schedule of Public Lands, under the jurisdiction of the Klamath National Forest, crossed by the centerline of Pacific Power & Light Company's 69kV Line No. 33, WITH SOME 12Kv UNDERBUILD AND EXTENSIONS, which were previously covered by Special Use Permits dated April 17, 1942, March 18, 1952 and September 27, 1956, and are now consolidated into this one Special Use Permit.

Special Use Permit Dated April 17, 1942, with Amendments 1 thru 13  
Right-of-Way width is 40', being 20' each side of centerline, unless otherwise noted.

TOWNSHIP 44 NORTH, RANGE 9 WEST, MDM, BISKIYOU COUNTY

SECTION 02: SW $\frac{1}{4}$ , SW $\frac{1}{4}$  (447'); NW $\frac{1}{4}$ SW $\frac{1}{4}$  (280'); SW $\frac{1}{4}$ NW $\frac{1}{4}$  (1024');

TOWNSHIP 45 NORTH, RANGE 9 WEST, MDM, BISKIYOU COUNTY

SECTION 34: SW $\frac{1}{4}$ SE $\frac{1}{4}$  (1347'); SE $\frac{1}{4}$ SW $\frac{1}{4}$  (190'); NE $\frac{1}{4}$ SW $\frac{1}{4}$  (1569');  
SW $\frac{1}{4}$ NW $\frac{1}{4}$  (945'); NW $\frac{1}{4}$ NW $\frac{1}{4}$  (1440');

SECTION 28: SE $\frac{1}{4}$ NW $\frac{1}{4}$  (160'); SW $\frac{1}{4}$ NW $\frac{1}{4}$  (1473');

SECTION 20: SW $\frac{1}{4}$ SW $\frac{1}{4}$  (1788'); NW $\frac{1}{4}$ SW $\frac{1}{4}$  (215');

SECTION 18: SW $\frac{1}{4}$ SW $\frac{1}{4}$  (1002');

TOWNSHIP 45 NORTH, RANGE 10 WEST, MDM, BISKIYOU COUNTY

SECTION 14: SE $\frac{1}{4}$ SE $\frac{1}{4}$  (1286'); SW $\frac{1}{4}$ SE $\frac{1}{4}$  (1286');

SECTION 16: SE $\frac{1}{4}$ SE $\frac{1}{4}$  (261'); SW $\frac{1}{4}$ SE $\frac{1}{4}$  (319'); NW $\frac{1}{4}$ SE $\frac{1}{4}$  (245');  
NE $\frac{1}{4}$ SW $\frac{1}{4}$  (205'); SE $\frac{1}{4}$ NW $\frac{1}{4}$  (939'); SW $\frac{1}{4}$ NW $\frac{1}{4}$  (1669');

SECTION 17: NE $\frac{1}{4}$ NE $\frac{1}{4}$  (120');

SECTION 08: SE $\frac{1}{4}$ SE $\frac{1}{4}$  (1495'); NE $\frac{1}{4}$ SE $\frac{1}{4}$  (1165'); NW $\frac{1}{4}$ SE $\frac{1}{4}$  (375' X 40' & 690' X 100'); SE $\frac{1}{4}$ NW $\frac{1}{4}$  (746' X 100'); NE $\frac{1}{4}$ NW $\frac{1}{4}$  (195' X 40' & 660' X 50'); NW $\frac{1}{4}$ NW $\frac{1}{4}$  (408'); ALSO NE $\frac{1}{4}$ SE $\frac{1}{4}$  (320' X 40' for a 12kV extn from Amendment # 6):

SECTION 05: SW $\frac{1}{4}$ SW $\frac{1}{4}$  (147' X 40' & 670' X 50');

SECTION 06: ~~SE $\frac{1}{4}$ SE $\frac{1}{4}$  (150' X 50')~~ SW $\frac{1}{4}$ SE $\frac{1}{4}$  (40' X 50'); NW $\frac{1}{4}$ SE $\frac{1}{4}$  (520' X 40' & 400' X 50'); E $\frac{1}{2}$ NW $\frac{1}{4}$  (1276'); W $\frac{1}{2}$ NW $\frac{1}{4}$  (125');

Area originally permitted  
Now privately owned

94-5104



United States Department of Agriculture  
Forest Service

Exhibit 10

Case Name	Case/File Number
Slater	20-05-MBBKOWI
Case Type	Date of Incident
Wildland Fire	9/8/2020

EXHIBIT "A" PAGE 2

TOWNSHIP 46 NORTH, RANGE 11 WEST, MDN, SISKIYOU COUNTY

SECTION 36: SE\SE\ (1322'); NW\SW\ (77' X 80'); SW\NW\ (15' X 80')

SECTION 35: SE\NE\ (1768' X 80' & 292' X 40'); SW\NE\ (55');  
NW\NE\ (1423') ALSO NE\SE\ 437' X 40' for 2.4kV from  
Amend. # 5 AND 521' X 20' AND 1066' X 40' from Amend. # 7:

SECTION 26: SW\SE\ (738'); SE\SW\ (1432'); SW\SW\ (1103');  
NW\SW\ (1265')

SECTION 27: NE\SE\ (320'); SE\NE\ (1335'); SW\NE\ (1320');  
SE\NW\ (1459'); SW\NW\ (415'); NW\NW\ (1265')

SECTION 28: NE\NE\ (801')

SECTION 21: SE\SE\ (950'); SW\SE\ (780'); NE\SW\ (1270');  
SE\NW\ (475'); SW\NW\ (1310'); NW\NW\ (1360')

SECTION 20: NE\NE\ (118')

SECTION 17: SE\SE\ (477' X 40' & 1132' X 100'); SW\SE\ (486' X 40' &  
167' X 100'); NW\SE\ (560'); NE\SW\ (1360');  
NW\SW\ (1215')

SECTION 18: NE\SE\ (598'); SW\NE\ (1339')

TOWNSHIP 46 NORTH, RANGE 12 WEST, MDN, SISKIYOU COUNTY

SECTION 13: NW\NE\ (118' X 40' & 1314' X 100' ALSO 91' X 40' 12kV From  
Amend #4); SW\NE\ (615' X 100')

SECTION 11: NW\SW\ (1280')

SECTION 10: NE\SE\ (1468'); NW\SE\ (870'); SW\NE\ (914');  
SE\NW\ (920'); NE\NW\ (1308'); NW\NW\ (305')

SECTION 03: SW\SW\ (1186'); NW\SW\ (901')

SECTION 04: NE\SE\ (1515'); NW\SE\ (160'); S\NE\ (1295');  
E\NW\ (1365')

TOWNSHIP 47 NORTH, RANGE 12 WEST, MDN, SISKIYOU COUNTY

SECTION 32: SE\SE\ (1760'); SW\SE\ (1325'); SE\SW\ (985');  
SW\SW\ (710')

SECTION 31: S\S\ (7568')

945104



United States Department of Agriculture  
Forest Service

**Exhibit 10**

Case Name Slater	Case/File Number 20-05-MBBKOWI
Case Type Wildland Fire	Date of Incident 9/8/2020

EXHIBIT "A" PAGE 3

TOWNSHIP 17 NORTH, RANGE 8 EAST, NM, BISKIYOU COUNTY

SECTION 16: S4S4N4(2884');

SECTION 17: SE4NE4(250');

Special Use Permit dated March 18, 1952, with Amendments 1 thru 5:  
Right-of-Way width is 40', being 20' each side of centerline.

TOWNSHIP 17 NORTH, RANGE 8 EAST, NM, BISKIYOU COUNTY

SECTION 17: SE4NE4(1076'); SW4NE4(1329'); SE4NW4(595');  
NE4SW4(743'); NW4SW4(1327');

SECTION 18: NE4SE4(1258'); NW4SE4(1705'); NE4SW4(1410');  
NW4SW4(1253');

TOWNSHIP 17 NORTH, RANGE 7 EAST, NM, BISKIYOU COUNTY

SECTION 13: NE4SE4(1250'); NW4SE4(1250'); NE4SW4(1250');  
NW4SW4(1250');

SECTION 14: NE4SE4(798'); NE4SW4(190'); NW4SW4(1380');

SECTION 15: NE4SE4(190'); SE4SE4(1314'); SW4SE4(755');

Special Use Permit dated September 27, 1955, with Amendments # 1 & # 2:  
Right-of-way width is 100', being 50' each side of centerline, unless otherwise noted.

TOWNSHIP 17 NORTH, RANGE 7 EAST, NM, BISKIYOU COUNTY

SECTION 15: SW4SW4(110'); NW4SW4(1676');

SECTION 16: NE4SE4(190'); SE4NE4(973');

SECTION 08: SE4NE4(1053');

SECTION 05: NE4SW4(1321'); SE4NW4(1314'); NE4NW4(415');  
NW4NW4(1108');

TOWNSHIP 18 NORTH, RANGE 7 EAST, NM, BISKIYOU COUNTY

SECTION 32: SW4SW4(390');

SECTION 31: NE4SE4(305'); SE4NE4(375'); SW4NE4(817');  
NW4NE4(660'); NE4NW4(1387'); NW4NW4(1241');

SECTION 30: SW4SW4(150');

94-5104



United States Department of Agriculture  
Forest Service

Exhibit 10

Case Name	Case/File Number
Slater	20-05-MBBKOWI
Case Type	Date of Incident
Wildland Fire	9/8/2020

EXHIBIT "A" PAGE 4

TOWNSHIP 18 NORTH, RANGE 6 EAST, NM, SIBKIYOU COUNTY

- SECTION 25: SE\SE\ (1372); SW\SE\ (861' ~~ALSO 354' X 40' FOR 1231~~  
~~SECT. FROM Amend. 1)~~ NW\SE\ (55'); NE\SW\ (1666');  
 SE\NW\ (894'); SW\NW\ (600'); W\NW\ (1780');
- SECTION 24: SW\SW\ (509'); Line Removed
- SECTION 23: SE\SE\ (1637'); NE\SE\ (1418'); SE\NE\ (1317');  
 SW\NE\ (165); NW\NE\ (1435'); NE\NW\ (751');
- SECTION 14: SE\SW\ (863'); SW\SW\ (1217'); NW\SW\ (417');
- SECTION 15: NE\SE\ (1540'); NW\SE\ (1274'); NE\SW\ (760');  
 SE\NW\ (512'); SW\NW\ (1290);
- SECTION 16: SE\NE\ (635'); NE\SE\ (852'); NW\SE\ (213');  
 SW\NE\ (1584'); SE\NW\ (202'); NE\NW\ (1397');
- SECTION 09: SE\SW\ (1037'); SW\SW\ (1173'); NW\SW\ (1007');
- SECTION 08: NE\SE\ (400'); SE\NE\ (1461'); SW\NE\ (395');

TOTALS FOR SPECIAL USE PERMIT DATED 04/17/1942 WITH 13 AMENDMENTS:

81,917' X 40' = 75.2222 acres  
~~1,920' X 30' = 2.2038 acres~~ 1730' X 50' = 1.9858 acres  
 1,860' X 80' = 3.4159 acres  
 4,864' X 100' = 11.1662 acres  
 821' X 20' = 0.2392 acres

TOTAL ACRES FOR THIS SECTION = ~~92.2479~~ 92.0293

TOTALS FOR SPECIAL USE PERMIT DATED 03/18/1952 WITH 5 AMENDMENTS:

20,323' X 40' = 18.6620 acres

TOTAL ACRES FOR THIS SECTION = 18.6620

TOTALS FOR SPECIAL USE PERMIT DATED 09/27/1956 WITH 2 AMENDMENTS:

46,164' X 100' = 105.9779 acres  
~~354' X 40' = 0.3250 acres~~

TOTAL ACRES FOR THIS SECTION = ~~106.3029~~ 105.9779

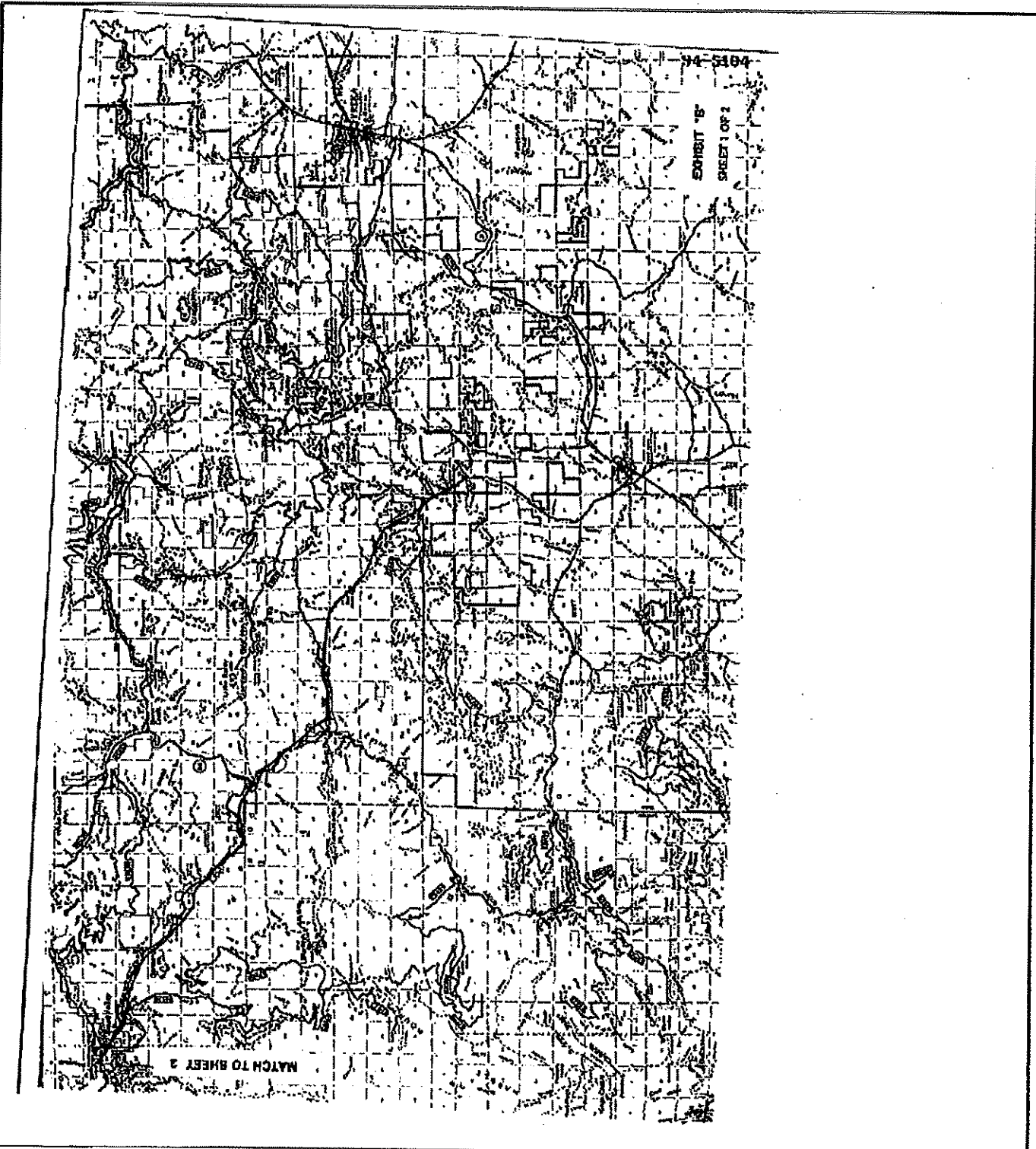
TOTAL ACREAGE FOR THIS COMBINED EXHIBIT = ~~217.2192~~ 216.6692

94.5104



United States Department of Agriculture  
Forest Service  
**Exhibit 10**

Case Name	Case/File Number
Slater	20-05-MBBK0WI
Case Type	Date of Incident
Wildland Fire	9/8/2020





United States Department of Agriculture  
Forest Service

**Exhibit 10**

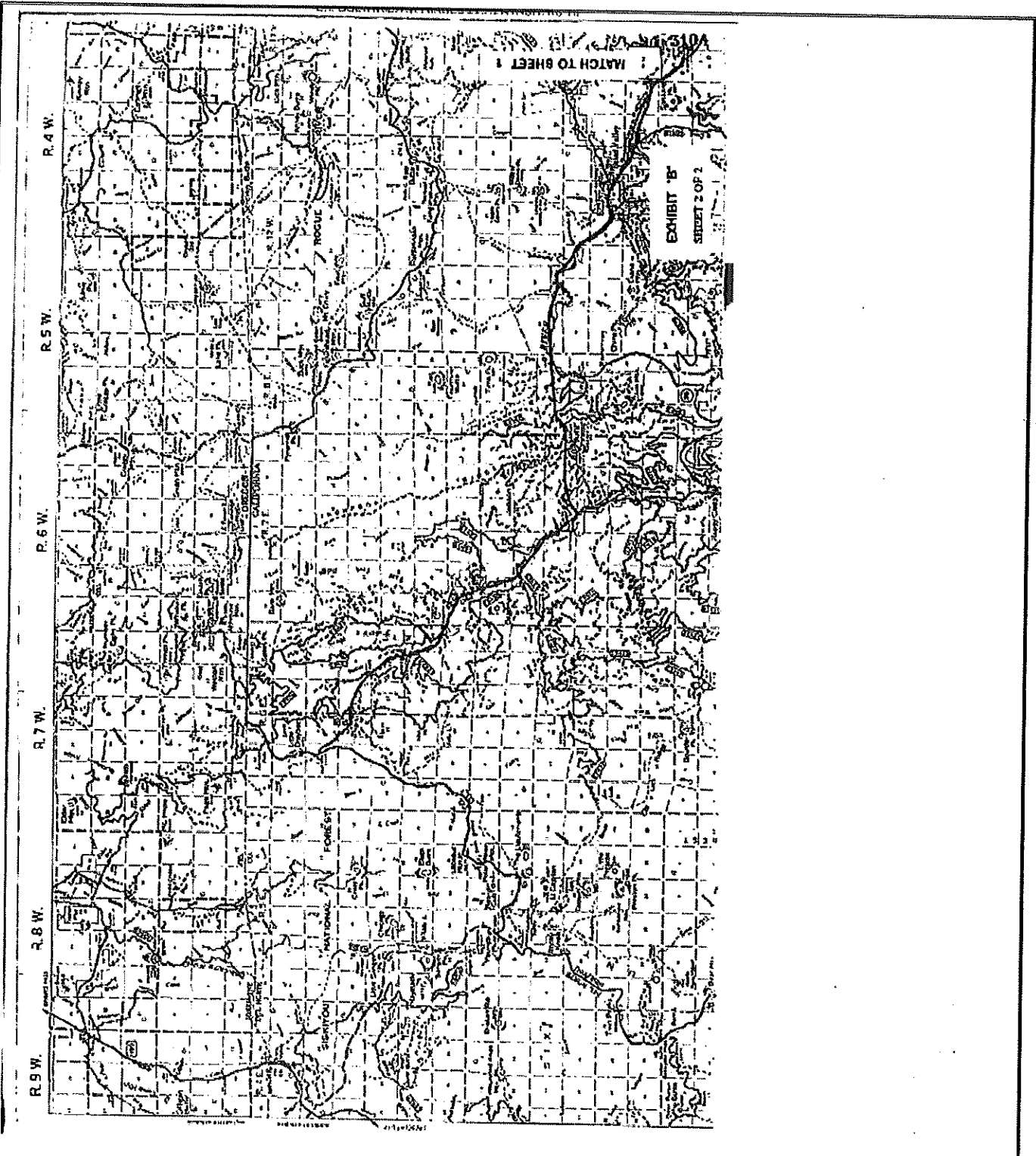
Case Name	Case/File Number
Slater	20-05-MBBKOWI
Case Type	Date of Incident
Wildland Fire	9/8/2020



United States Department of Agriculture  
Forest Service

### Exhibit 10

Case Name	Case/File Number
Slater	20-05-MBBK0W1
Case Type	Date of Incident
Wildland Fire	9/8/2020

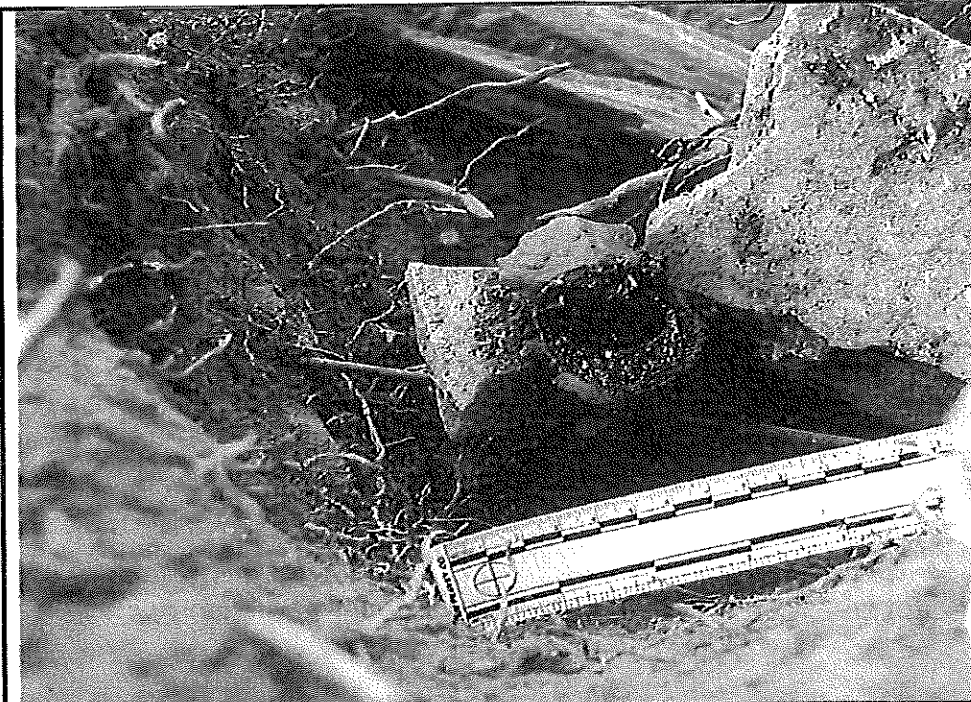




United States Department of Agriculture  
Forest Service

**Exhibit 11**

Case Name <b>Slater</b>	Case/File Number <b>20-05-MBBKOW1</b>
Case Type <b>Wildland Fire</b>	Date of Incident <b>9/8/2020</b>



**Photograph Number:**  
38 Indicators and fulgurite  
**Date:**  
9/13/20  
**Time:**  
1337  
**Photographer:**  
b6 & b7C  
**Subject:**  
Solid copper wire fused to fulgurite  
below ground



**Photograph Number:**  
39 Indicators and fulgurite  
**Date:**  
9/13/20  
**Time:**  
1338  
**Photographer:**  
b6 & b7C  
**Subject:**  
Base of fulgurite with discarded  
cooper wire from above.



United States Department of Agriculture  
Forest Service

**Exhibit 11**

Case Name	Case/File Number
Slater	20-05-MBBKOWI
Case Type	Date of Incident
Wildland Fire	9/8/2020

Examples of the numerous abandoned aluminum conductors and splices lying on the ground including between Poles 4 and 5.



**Photograph Number:**

**Date:**  
8/18/20  
**Time:**

**Photographer:**

b6 & b7C

**Subject:**

Example slide of discarded conductors from b6 & b7C Notes



**Photograph Number:**

b6 & b7C 2020-09-18 15-03-28

**Date:**  
9/18/20  
**Time:**  
1506

**Photographer:**

b6 & b7C

**Subject:**

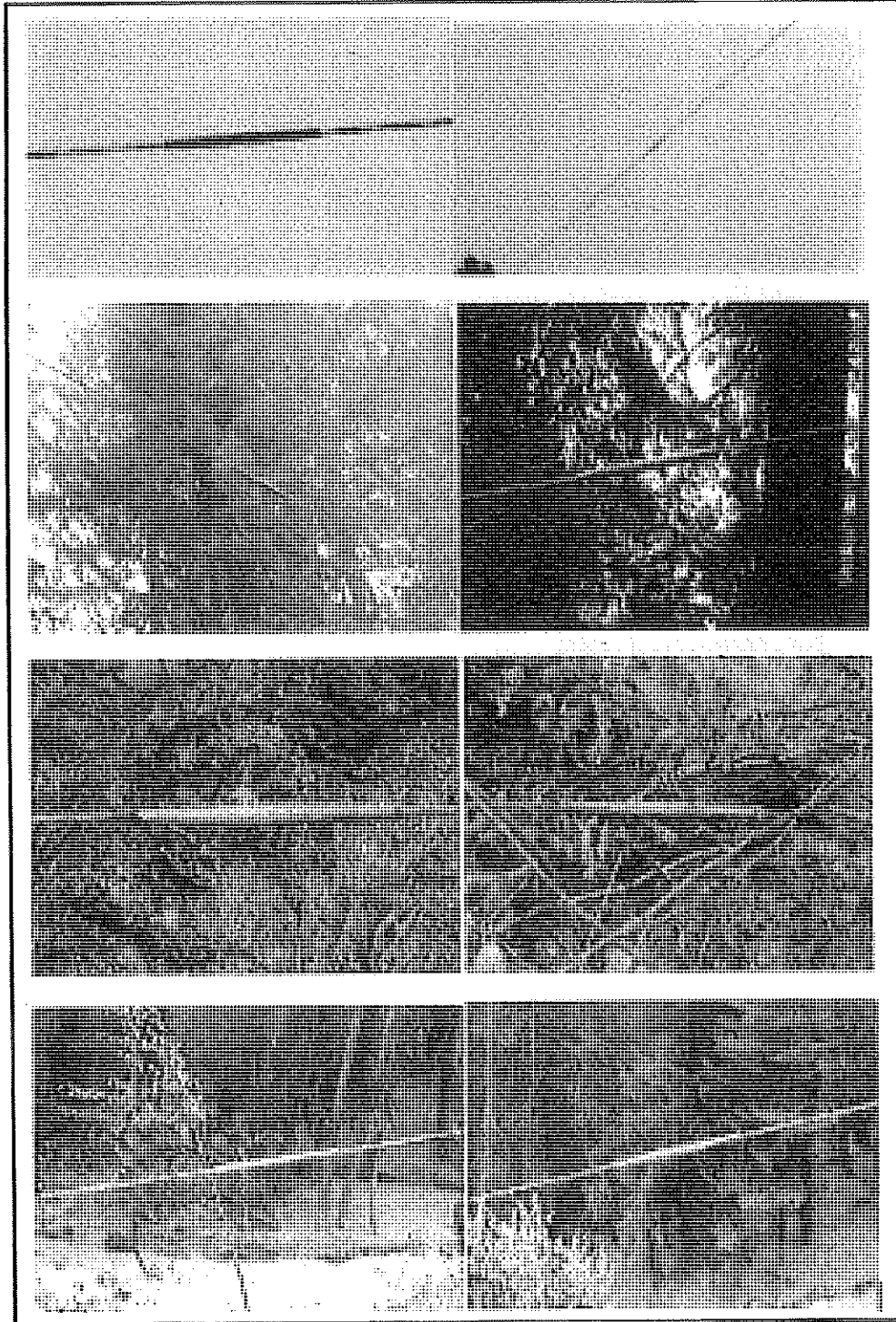
Photograph taken by b6 & b7C of discarded cooper conductor.



United States Department of Agriculture  
Forest Service  
**Exhibit 12**

Case Name	Case/File Number
Slater	20-05-MBBKOWI
Case Type	Date of Incident
Wildland Fire	9/8/2020

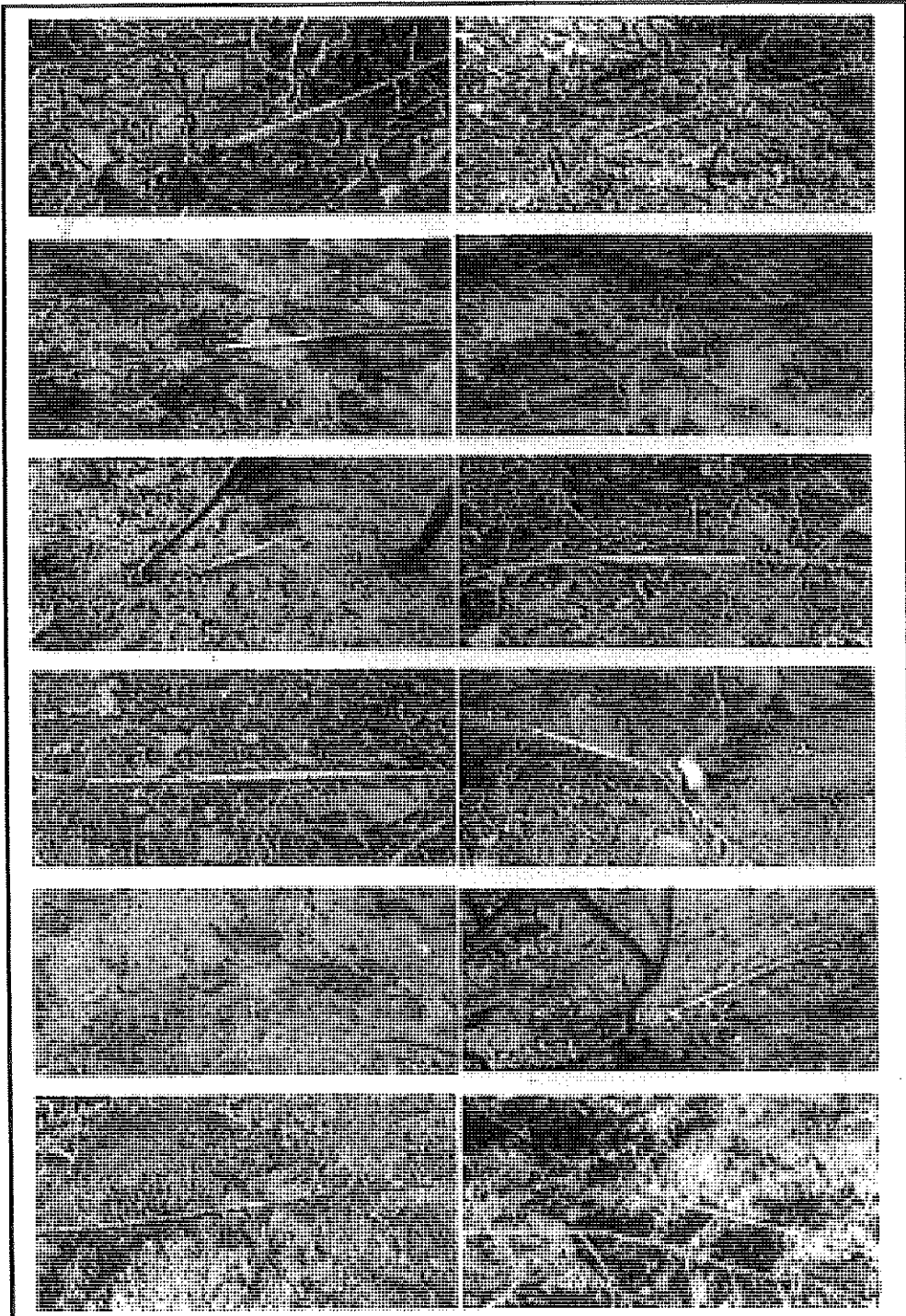
**Photograph Number:**  
23, 30, 35, 37, 40, 41, 46, & 47  
**Electrical**  
**Date:**  
9/13/20  
**Time:**  
1128 to 1213  
**Photographer:**  
b6 & b7C  
**Subject:**  
Splices in East Conductor over  
course of distribution line.





United States Department of Agriculture  
Forest Service  
**Exhibit 12**

Case Name	Case/File Number
Slater	20-05-MBBK0WI
Case Type	Date of Incident
Wildland Fire	9/8/2020

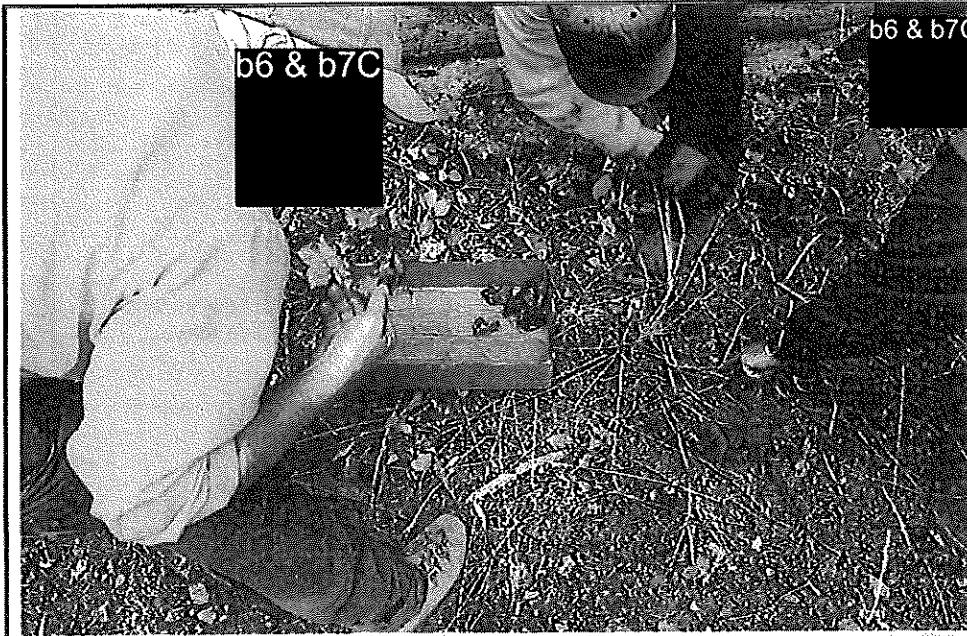


**Photograph Number:**  
28, 29, 33, 34, 36, 42, 43, 44, 45, 48,  
49, & 50 Electrical  
**Date:**  
9/13/20  
**Time:**  
1139 to 1216  
**Photographer:**  
b6 & b7C  
**Subject:**  
Splices in West Conductor over  
course of distribution line.



United States Department of Agriculture  
Forest Service  
**Exhibit 13**

Case Name	Case/File Number
Slater	20-05-MBBK0W1
Case Type	Date of Incident
Wildland Fire	9/8/2020



Photograph Number:  
b6 & b7C 2020-09-18 15-05-31  
Date:  
9/18/20  
Time:  
1508  
Photographer:  
b6 & b7C  
Subject:  
Fulgurite collection, created prior to Slater Fire.



Photograph Number:  
b6 & b7C 2020-09-18 15-07-02  
Date:  
9/18/20  
Time:  
1510  
Photographer:  
b6 & b7C  
Subject:  
Fulgurites created prior to Slater Fire



United States Department of Agriculture  
Forest Service  
**Exhibit 14**



**Photograph Number:**  
25 Electrical  
**Date:**  
9/12/2020  
**Time:**  
1402  
**Photographer:**  
b6 & b7C  
**Subject:**  
Charred tree with West Conductor  
north severed end in branches



**Photograph Number:**  
26 Electrical  
**Date:**  
9/12/20  
**Time:**  
1403  
**Photographer:**  
b6 & b7C  
**Subject:**  
West Conductor north severed end



United States Department of Agriculture  
Forest Service  
**Exhibit 14**



**Photograph Number:**  
b6 & b7C 2020-09-18 13-27-55  
**Date:**  
9/18/20  
**Time:**  
1331  
**Photographer:**  
b6 & b7C  
**Subject:**  
Severed north end of west conductor



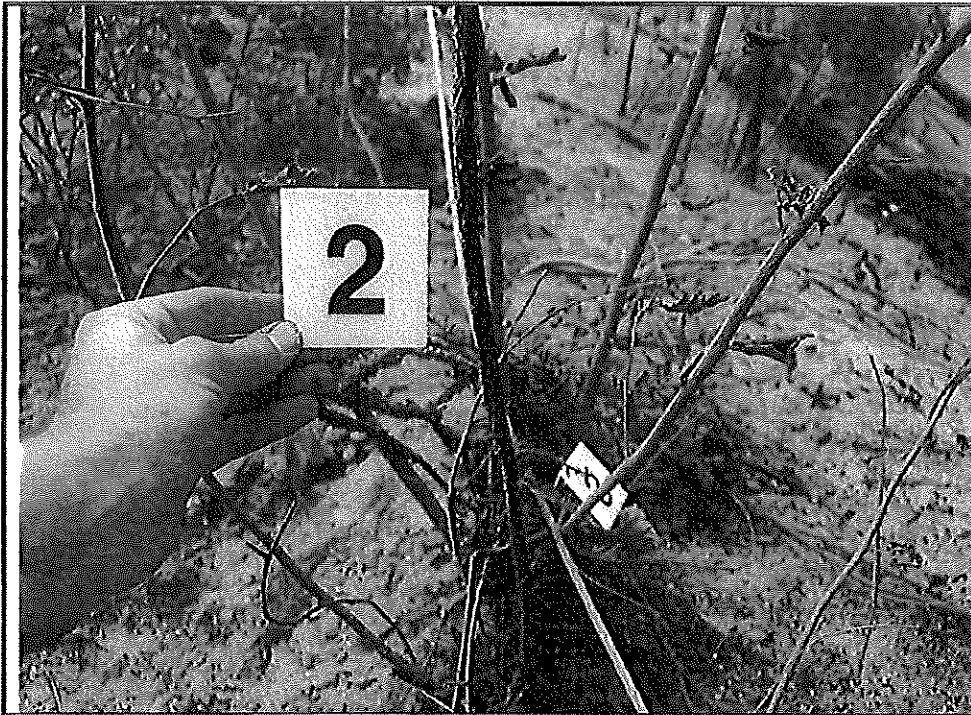
**Photograph Number:**  
b6 & b7C 2020-09-18 13-28-12  
**Date:**  
9/18/13  
**Time:**  
1331  
**Photographer:**  
b6 & b7C  
**Subject:**  
Severed north end of west conductor



United States Department of Agriculture  
Forest Service

### Photograph Exhibit 15

Case Name <b>Slater Fire</b>	Case/File Number <b>20-05-MBBK0WI</b>
Case Type <b>Wildland Fire</b>	Date of Incident <b>9/8/20</b>



**Photograph Number:**  
20 Electrical  
**Date:**  
9/12/20  
**Time:**  
1355  
**Photographer:**  
b6 & b7C  
**Subject:**  
Charred Conductor Struck  
Vegetation



**Photograph Number:**  
21 Electrical  
**Date:**  
9/12/20  
**Time:**  
1356  
**Photographer:**  
b6 & b7C  
**Subject:**  
Charred Conductor Struck  
Vegetation



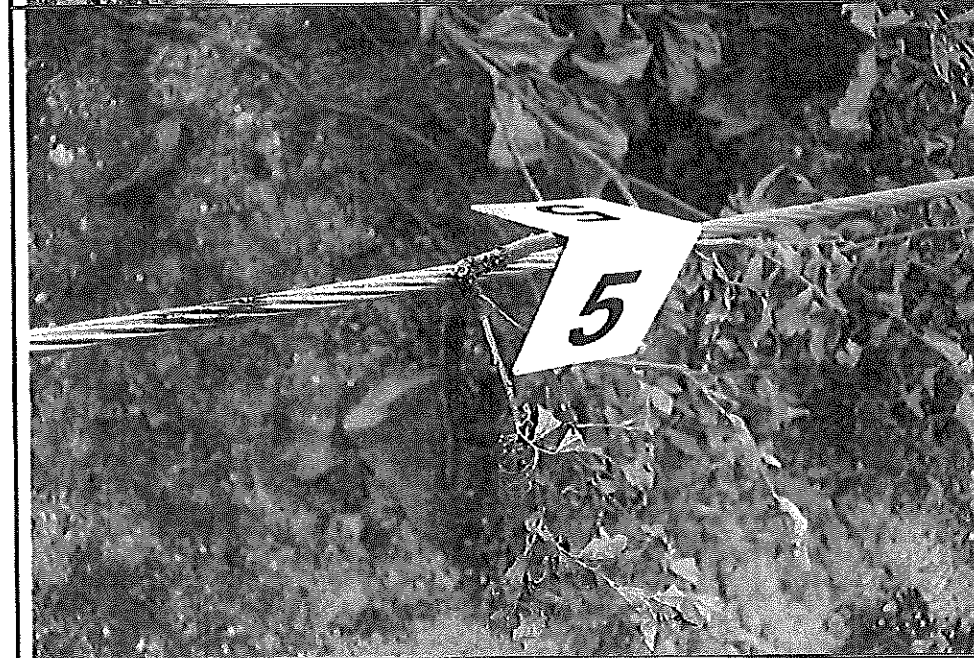
United States Department of Agriculture  
Forest Service

Photograph Exhibit 15

Case Name	Case/File Number
Slater Fire	20-05-MBBK0W1
Case Type	Date of Incident
Wildland Fire	9/8/20



Photograph Number:  
22 Electrical  
Date:  
9/12/20  
Time:  
1358  
Photographer:  
b6 & b7C  
Subject:  
Charred Conductor Struck  
Vegetation



Photograph Number:  
Date:  
Time:  
Photographer:  
Subject:



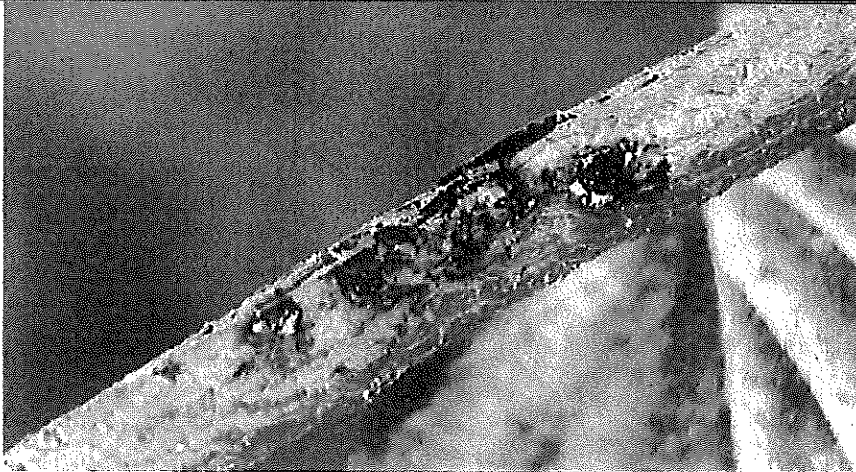
United States Department of Agriculture  
Forest Service

**Photograph Exhibit 15**

Case Name <b>Slater Fire</b>	Case/File Number <b>20-05-MBBKOWI</b>
Case Type <b>Wildland Fire</b>	Date of Incident <b>9/8/20</b>



**Photograph Number:**  
b6 & b7C 2020-09-18 13-32-59  
**Date:**  
9/18/20  
**Time:**  
1336  
**Photographer:**  
b6 & b7C  
**Subject:**  
Electrically Charred Conductor  
Struck Vegetation



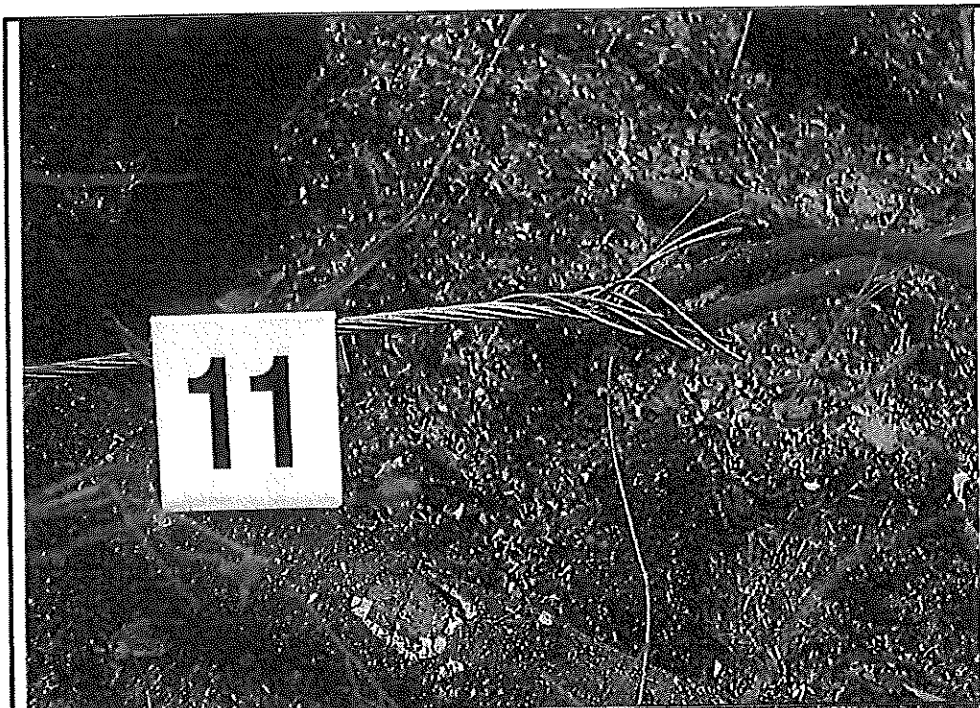
**Photograph Number:**  
b6 & b7C 2020-09-18 13-32-59  
**Date:**  
9-18-20  
**Time:**  
1336  
**Photographer:**  
b6 & b7C  
**Subject:**  
Close Up of Electrically Charred  
Conductor Struck Vegetation



United States Department of Agriculture  
Forest Service

**Photograph Exhibit 16**

Case Name <b>Slater Fire</b>	Case/File Number <b>20-05-MBBK0WI</b>
Case Type <b>Wildland Fire</b>	Date of Incident <b>9/8/20</b>



**Photograph Number:**  
29 Electrical  
**Date:**  
9/12/20  
**Time:**  
1410  
**Photographer:**  
b6 & b7C  
**Subject:**  
South End of Severed West  
Conductor



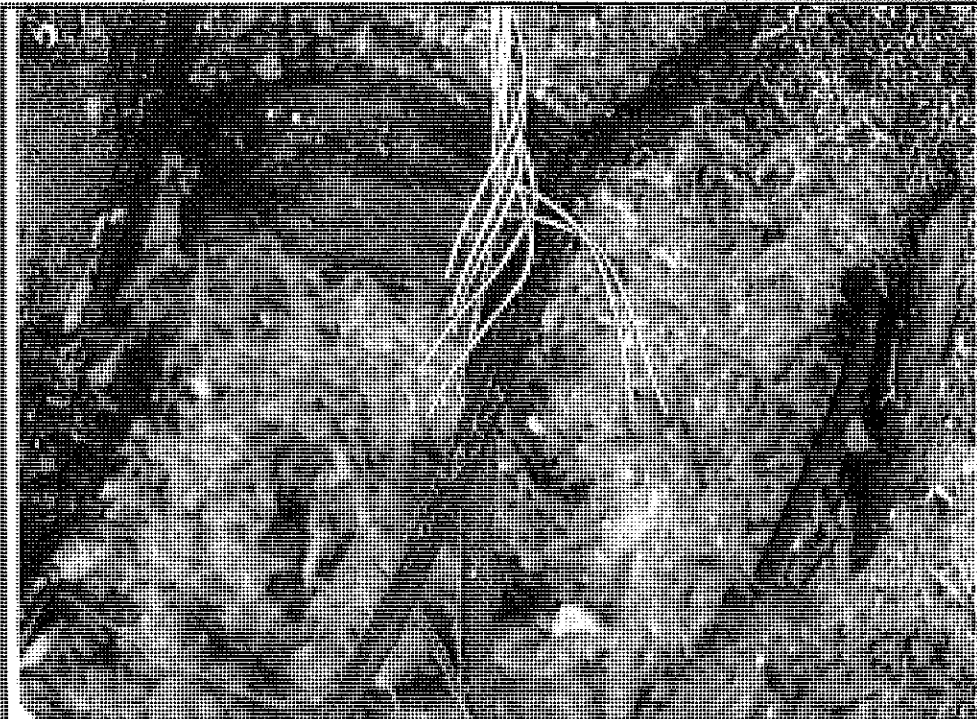
**Photograph Number:**  
b6 & b7C 2020-09-18 13-18-08  
**Date:**  
9/18/20  
**Time:**  
1321  
**Photographer:**  
b6 & b7C  
**Subject:**  
South End of Severed West  
Conductor



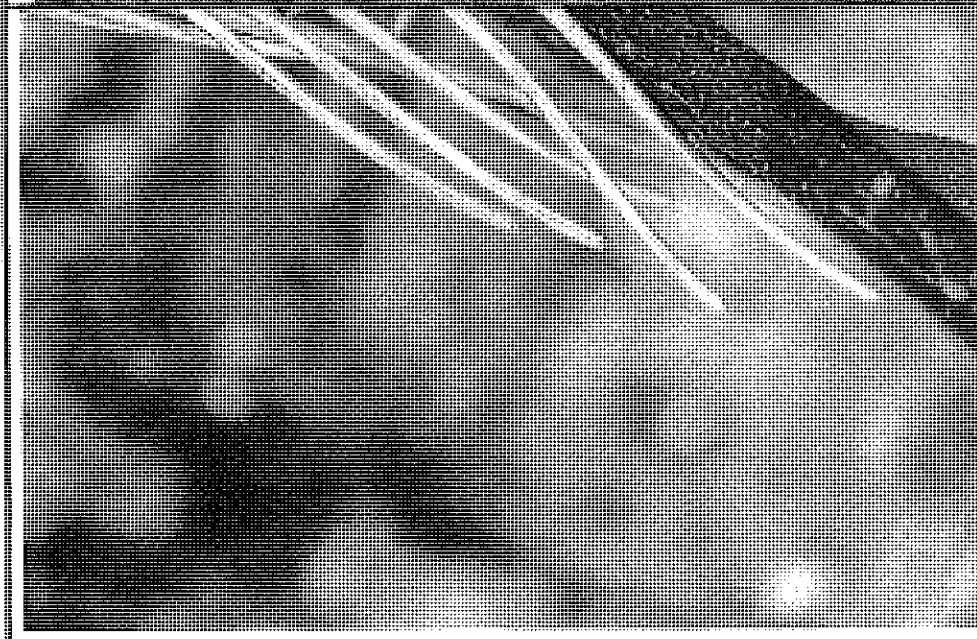
United States Department of Agriculture  
Forest Service

### Photograph Exhibit 16

Case Name	Case/File Number
Slater Fire	20-05-MBBK0W1
Case Type	Date of Incident
Wildland Fire	9/8/20



Photograph Number:  
[REDACTED] 2020-09-18 11-19-39  
Date:  
9/19/20  
Time:  
1323  
Photographer:  
[REDACTED]  
Subject:  
South end of West Conductor limb  
above



Photograph Number:  
[REDACTED] 2020-09-18 11-18-36  
Date:  
9/19/20  
Time:  
1311  
Photographer:  
[REDACTED]  
Subject:  
Close Up South End of West  
Conductor Limb



United States Department of Agriculture  
Forest Service

Photograph Exhibit 17



Photograph Number:  
b6 & b7C 2020-09-18 13-24-37  
Date:  
09/18/20  
Time:  
1327  
Photographer:  
b6 & b7C  
Subject:  
Heavily burned area at top end of  
White Fir tree



Photograph Number:  
b6 & b7C 2020-09-18 13-37-24  
Date:  
9/18/20  
Time:  
1340  
Photographer:  
b6 & b7C  
Subject:  
Melted conductor segments in area  
of White Fir tree top



United States Department of Agriculture  
Forest Service

Photograph Exhibit 17



Photograph Number:

2000-09-18 13-38-05

Date:

9/18/20

Time:

1341

Photographer:

21102

Subject:

Melted conductor segments in area  
of White Fir tree top



Photograph Number:

2000-09-18 13-38-15

Date:

9/18/20

Time:

1341

Photographer:

21102

Subject:

Close Up Melted Conductor  
Segments near top of White Fir tree



United States Department of Agriculture  
Forest Service

**Photograph Exhibit 18**

Case Name	Case/File Number
Slater Fire	20-05-MBBK0W1
Case Type	Date of Incident
Wildland Fire	9/8/20



**Photograph Number:**  
b6 & b7C 2020-09-18 13-25-35  
**Date:**  
9/18/20  
**Time:**  
1328  
**Photographer:**  
b6 & b7C  
**Subject:**  
Tree resting on East Conductor post fire



**Photograph Number:**  
b6 & b7C 2020-09-18 13-25-59  
**Date:**  
9/18/20  
**Time:**  
1329  
**Photographer:**  
b6 & b7C  
**Subject:**  
Close up of Contact Point Tree Resting on East Conductor



United States Department of Agriculture  
Forest Service

**Photograph Exhibit 19**

Case Name <b>Slater Fire</b>	Case/File Number <b>20-05-MBBK0WI</b>
Case Type <b>Wildland Fire</b>	Date of Incident <b>9/8/20</b>



**Photograph Number:**  
28 Indicators & Fulgurite  
**Date:**  
9/12/20  
**Time:**  
1405  
**Photographer:**  
b6 & b7C  
**Subject:**  
Sap Like Substance on East  
Conductor above White Fir Tree



**Photograph Number:**  
27 Indicators & Fulgurite  
**Date:**  
9/12/20  
**Time:**  
1405  
**Photographer:**  
b6 & b7C  
**Subject:**  
Debris on East Conductor Above  
White Fir Tree



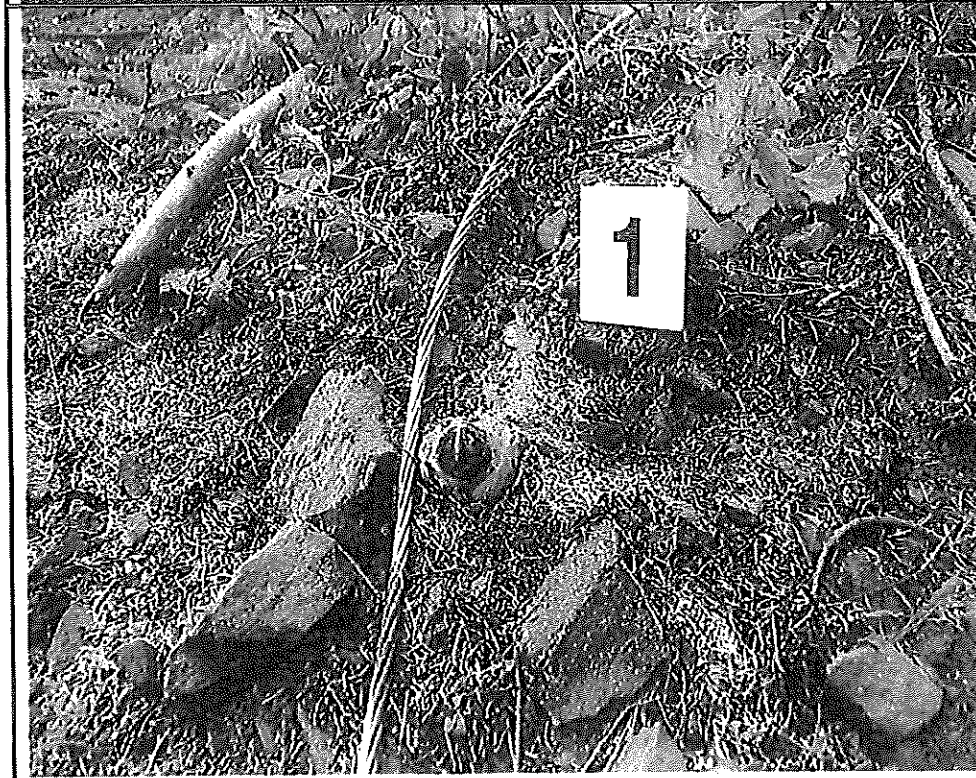
United States Department of Agriculture  
Forest Service

**Photograph Exhibit 20**

Case Name	Case/File Number
Slater Fire	20-05-MBBK0WI
Case Type	Date of Incident
Wildland Fire	9/8/20



**Photograph Number:**  
6 Indicators & Fulgurite  
**Date:**  
9/12/2020  
**Time:**  
1314  
**Photographer:**  
b6 & b7C  
**Subject:**  
West Conductor at Specific Origin



**Photograph Number:**  
7 Indicators & Fulgurite  
**Date:**  
9/12/20  
**Time:**  
1315  
**Photographer:**  
b6 & b7C  
**Subject:**  
Fulgurite Located Within Specific Origin



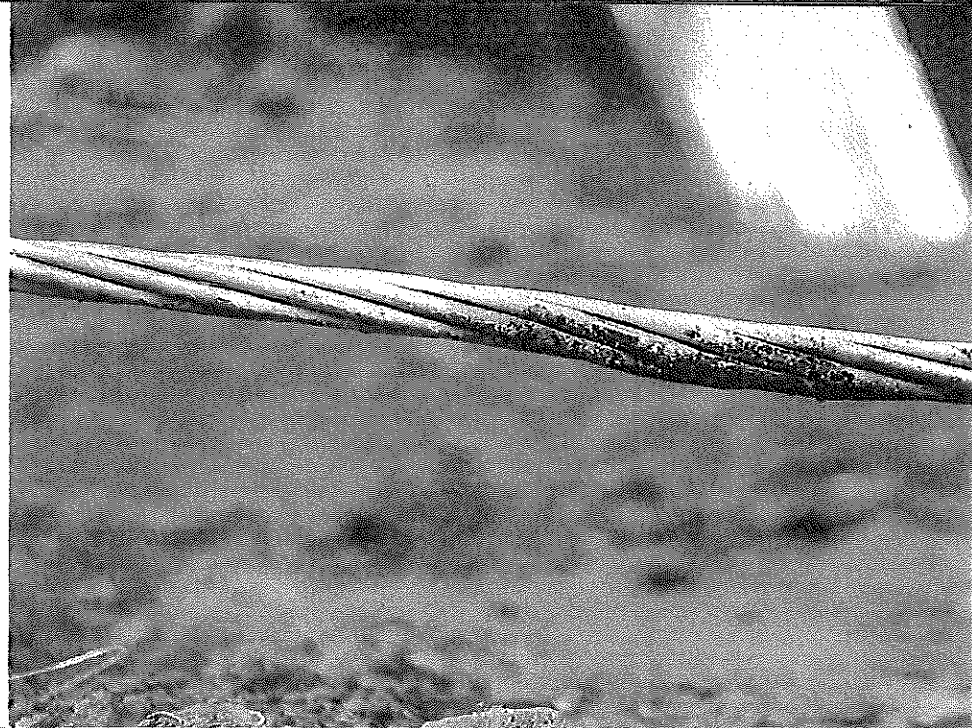
United States Department of Agriculture  
Forest Service

**Photograph Exhibit 20**

Case Name	Case/File Number
Slater Fire	20-05-MBBKOWI
Case Type	Date of Incident
Wildland Fire	9/8/20



**Photograph Number:**  
8 Indicators & Fulgurite  
**Date:**  
9/12/18  
**Time:**  
1316  
**Photographer:**  
b6 & b7C  
**Subject:**  
Arcing on West Conductor at  
Fulgurite



**Photograph Number:**  
35 Indicators & Fulgurite  
**Date:**  
9/12/20  
**Time:**  
1556  
**Photographer:**  
b6 & b7C  
**Subject:**  
Arc Erosion on Underside of West  
Conductor located after fulgurite  
excavation.



United States Department of Agriculture  
Forest Service

Photograph Exhibit 20

Case Name	Case/File Number
Slater Fire	20-05-MBBKOWI
Case Type	Date of Incident
Wildland Fire	9/8/20



Photograph Number:  
33  
Indicator: Fulgurite  
Date:  
9/12/20  
Time:  
1444  
Photographer:  
JG & BJC  
Subject:  
Partially Excavated Parallel Portion  
of Fulgurite



Photograph Number:  
34  
Date:  
9/12/20  
Time:  
1517  
Photographer:  
JG & BJC  
Subject:  
Further Excavation of Fulgurite to  
point where Fulgurite Turns Vertical



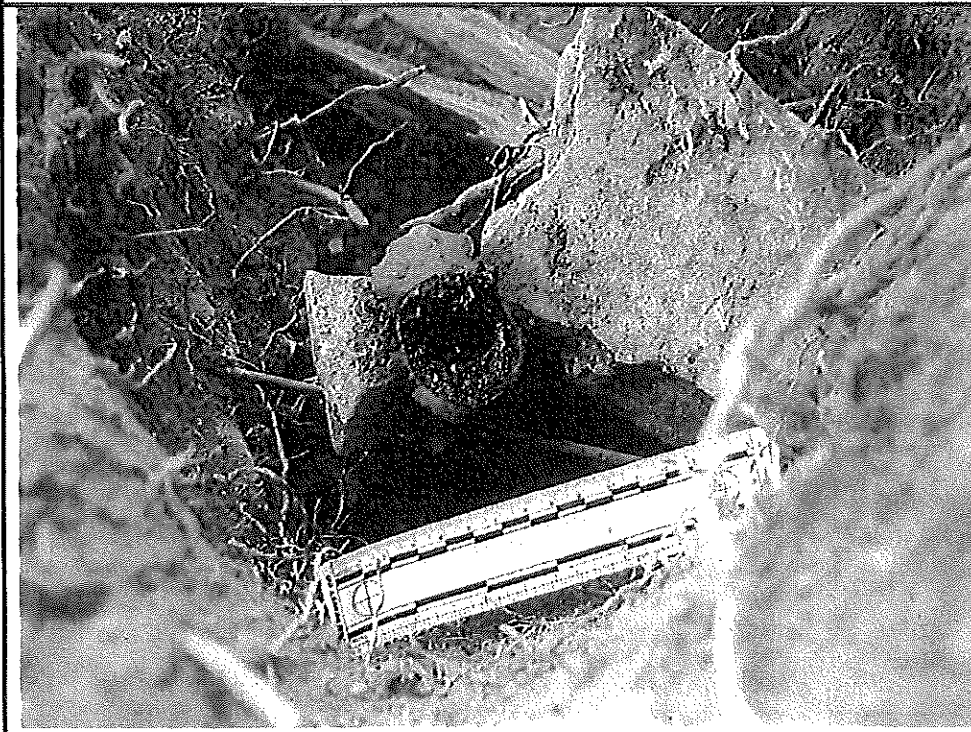
United States Department of Agriculture  
Forest Service

**Photograph Exhibit 20**

Case Name	Case/File Number
Slater Fire	20-05-MBBKOW1
Case Type	Date of Incident
Wildland Fire	9/8/20



**Photograph Number:**  
39 Indicators and Fulgurites  
**Date:**  
9/13/20  
**Time:**  
1330  
**Photographer:**  
b6 & b7C  
**Subject:**  
Vertical Portion of Fulgurite  
Terminating on Charred Tree Root  
with Buried Copper Conductor



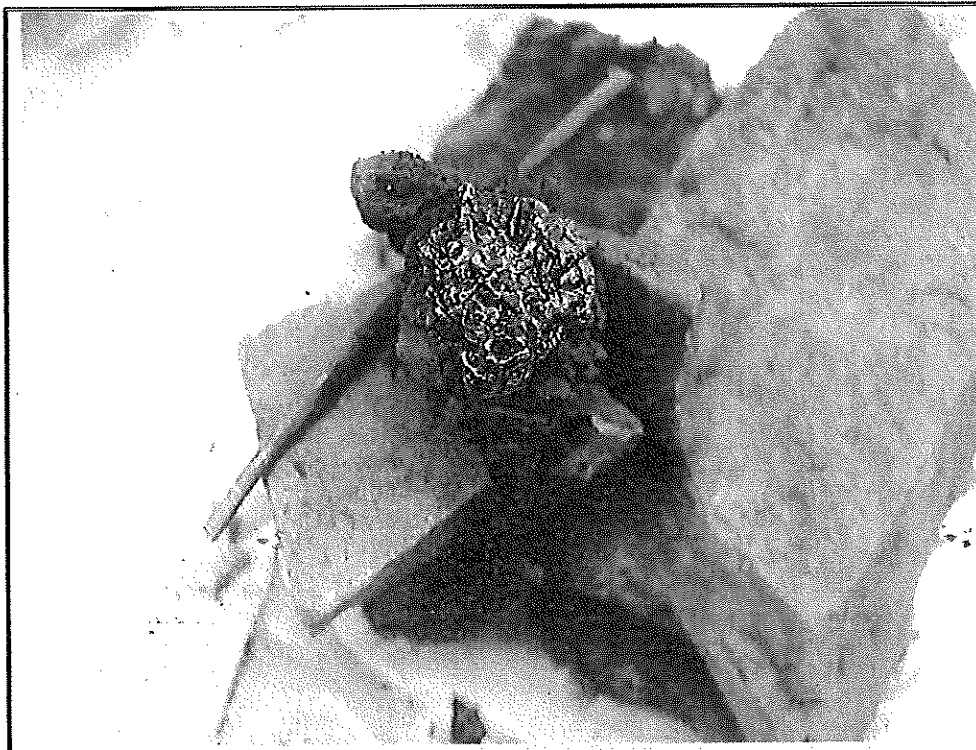
**Photograph Number:**  
38 Indicators & Fulgurites  
**Date:**  
9/13/20  
**Time:**  
1337  
**Photographer:**  
b6 & b7C  
**Subject:**  
Hallow Center of Vertical Portion of  
Fulgurite with Fused Copper  
Conductor



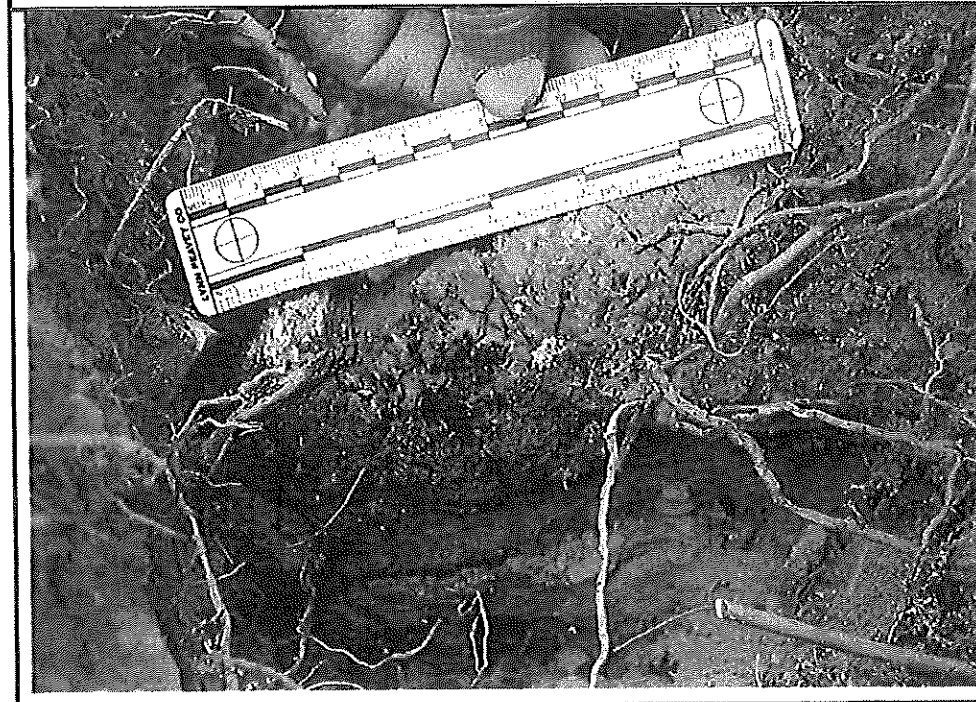
United States Department of Agriculture  
Forest Service

**Photograph Exhibit 20**

Case Name	Case/File Number
Slater Fire	20-05-MBBKOW1
Case Type	Date of Incident
Wildland Fire	9/8/20



**Photograph Number:**  
40 Indicators & Fulgurite  
**Date:**  
9/13/20  
**Time:**  
1344  
**Photographer:**  
b6 & b7C  
**Subject:**  
End of Vertical Portion of Fulgurite  
that Contacted Charred Tree Root



**Photograph Number:**  
42 Indicators & Fulgurite  
**Date:**  
9/13/20  
**Time:**  
1347  
**Photographer:**  
b6 & b7C  
**Subject:**  
Point Where Fulgurite Contacted  
Tree Root



United States Department of Agriculture  
Forest Service

**Photograph Exhibit 21**

Case Name <b>Slater Fire</b>	Case/File Number <b>20-05-MBBK0W1</b>
Case Type <b>Wildland Fire</b>	Date of Incident <b>9/8/20</b>



**Photograph Number:**  
52 Tree  
**Date:**  
9/12/20  
**Time:**  
1043  
**Photographer:**  
b6 & b7C  
**Subject:**  
Lookout Gate and White Fir Tree  
Looking South



**Photograph Number:**  
14 Tree  
**Date:**  
9/12/20  
**Time:**  
0951  
**Photographer:**  
b6 & b7C  
**Subject:**  
White Fir Tree Looking North



United States Department of Agriculture  
Forest Service

### Photograph Exhibit 21

Case Name	Case/File Number
Slater Fire	20-05-MBBKOWI
Case Type	Date of Incident
Wildland Fire	9/8/20



**Photograph Number:**  
15 Tree  
**Date:**  
9/12/20  
**Time:**  
0952  
**Photographer:**  
b6 & b7C  
**Subject:**  
Base of White Fir Tree from South Side



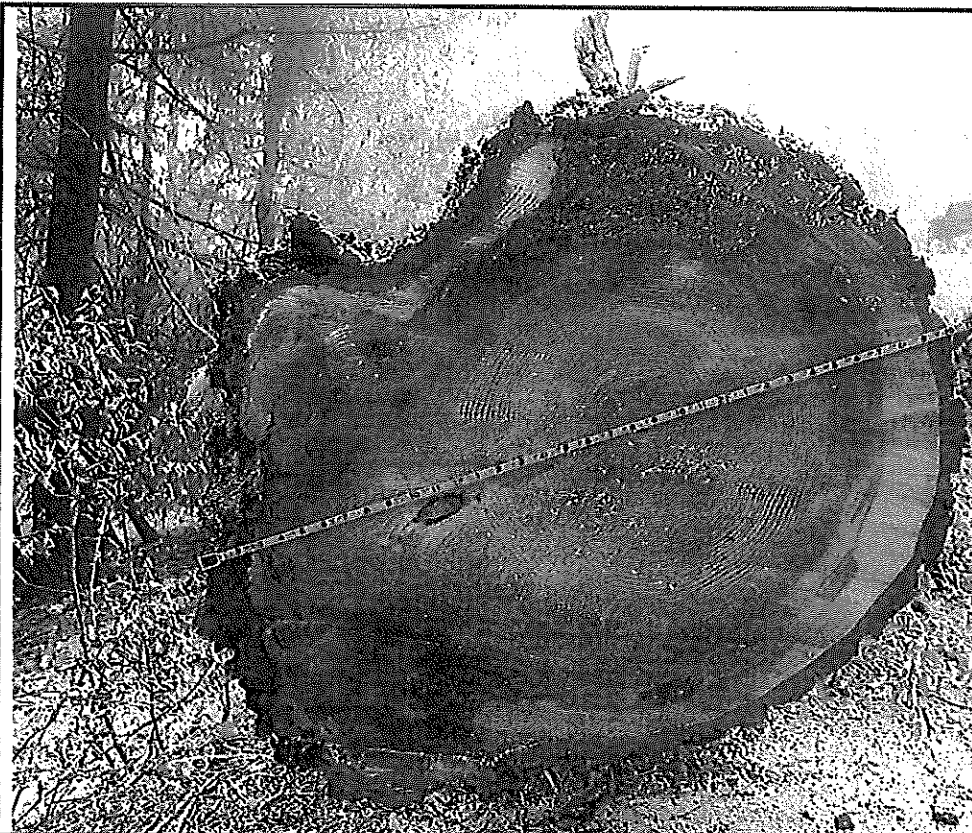
**Photograph Number:**  
36 Tree  
**Date:**  
9/12/20  
**Time:**  
1026  
**Photographer:**  
b6 & b7C  
**Subject:**  
Base of White Fir Tree from North Side



United States Department of Agriculture  
Forest Service

**Photograph Exhibit 21**

Case Name <b>Slater Fire</b>	Case/File Number <b>20-05-MBBK0W1</b>
Case Type <b>Wildland Fire</b>	Date of Incident <b>9/8/20</b>



**Photograph Number:**  
25 Tree  
**Date:**  
9/12/20  
**Time:**  
1017  
**Photographer:**  
b6 & b7C  
**Subject:**  
Diameter of White Fir Tree



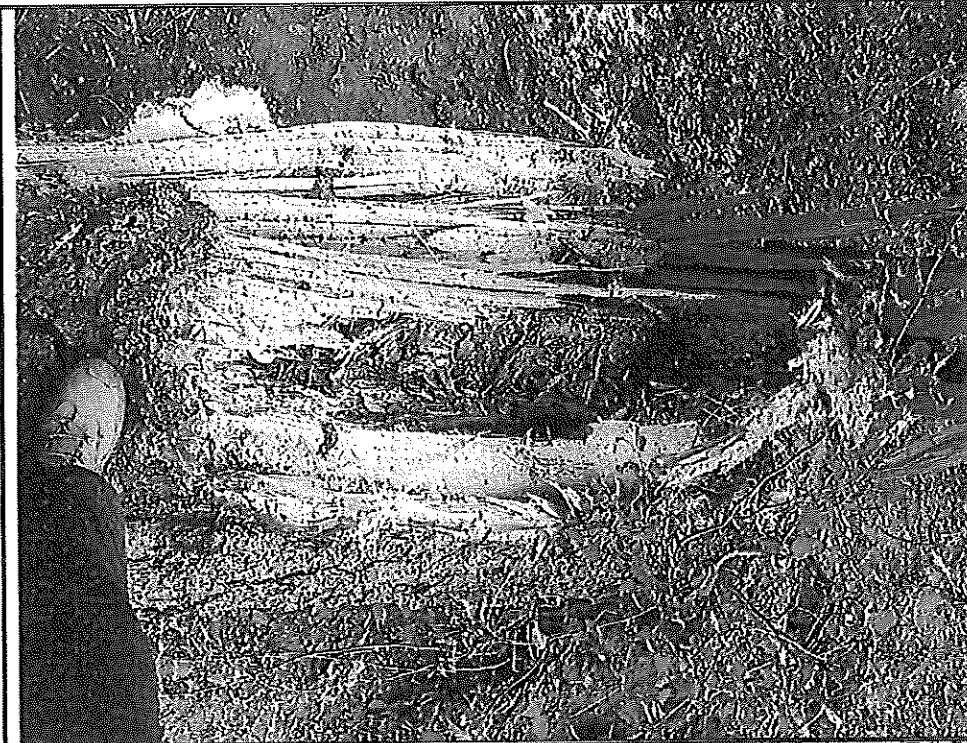
**Photograph Number:**  
23 Tree  
**Date:**  
9/12/20  
**Time:**  
1014  
**Photographer:**  
b6 & b7C  
**Subject:**  
Fracture at Ground Level of White  
Fir Tree



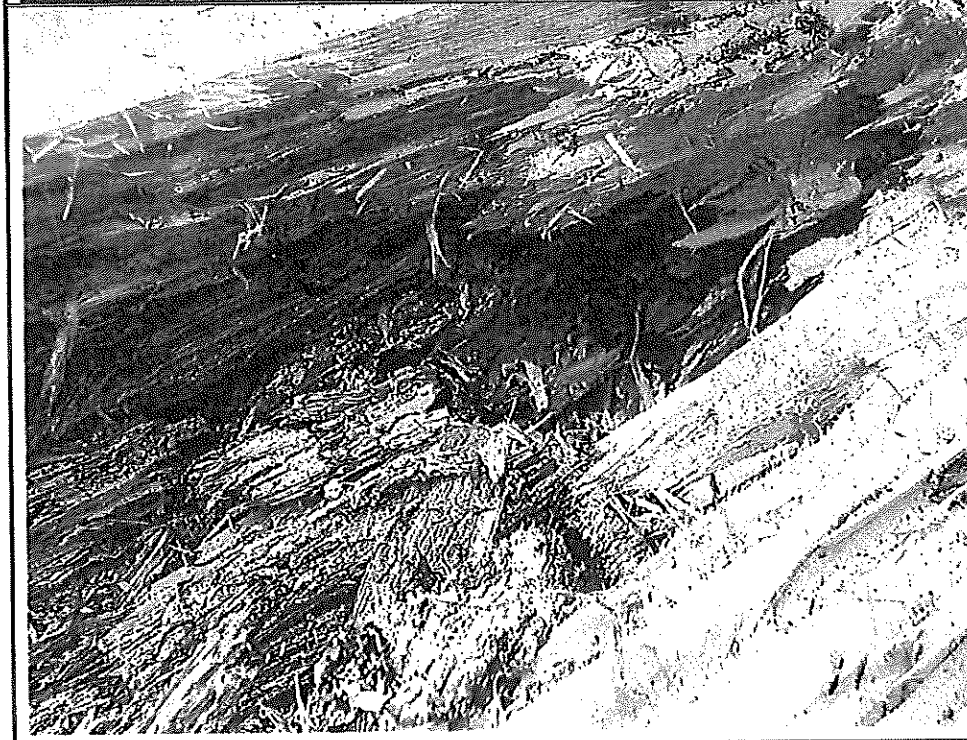
United States Department of Agriculture  
Forest Service

**Photograph Exhibit 21**

Case Name	Case/File Number
Slater Fire	20-05-MBBKOWI
Case Type	Date of Incident
Wildland Fire	9/8/20



Photograph Number:  
30  
Date:  
9/12/20  
Time:  
1013  
Photographer:  
b6 & b7C  
Subject:  
Interior of White Fir Tree Fracture  
from Above



Photograph Number:  
32  
Date:  
9/12/20  
Time:  
1024  
Photographer:  
b6 & b7C  
Subject:  
Wet, Rotted, White Fir Tree Interior



United States Department of Agriculture  
Forest Service

**Photograph Exhibit 21**

Case Name	Case/File Number
Slater Fire	20-05-MBBK0W1
Case Type	Date of Incident
Wildland Fire	9/8/20



Photograph Number:  
54 Tree  
Date:  
9/12/20  
Time:  
1047  
Photographer:  
b6 & b7C  
Subject:  
Live Green Needles on White Fir  
Tree



Photograph Number:  
60 Tree  
Date:  
9/12/20  
Time:  
1056  
Photographer:  
b6 & b7C  
Subject:  
Uppermost Portion of White Fir Tree



United States Department of Agriculture  
Forest Service

Photograph Exhibit 22

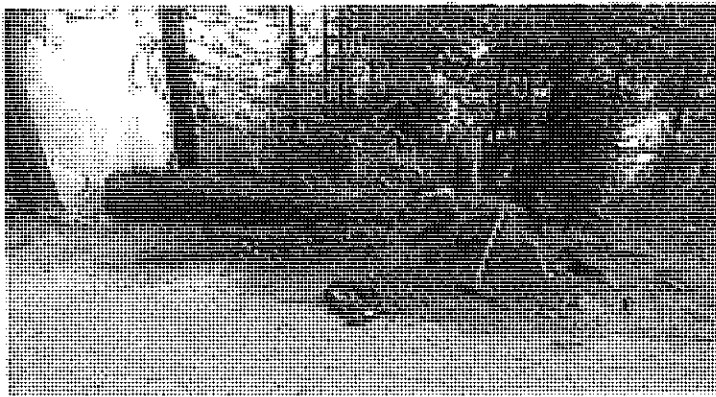
Case Name	Case/File Number
Slater Fire	20-05-MBBK0W1
Case Type	Date of Incident
Wildland Fire	9/8/20

Slater Fire Tree Failure Findings.

b6 & b7C

On September 15<sup>th</sup>, 2020, b6 & b7C and I were escorted to the site of the tree failure that struck a powerline and presumably initiated the Slater Fire. Special Agent b6 & b7C escorted us to the site near the Slater Butte fire lookout on the Klamath National Forest. Two law enforcement agents accompanied us. We had been contacted previously by agent b6 & b7C who requested our assistance in determining the cause of the tree failure.

The tree that failed was a white fir (*Abies concolor*) with a diameter of approximately 30.5 inches at 7.8 feet from the ground. It was not possible to take a diameter at breast height measurement because that portion of the bole had failed and was split into two sections, one suspended over the road, one remaining anchored in the ground (see image below).



Findings:

- Heart-rot in the basal portion of the bole extending from below the ground in the roots, extending upward to approximately 6 feet.
- At the ground level the heartwood was decayed, a white-rot was present in the remaining heartwood adjacent to the sapwood.
- Rhizomorphs (melanized mycelial cords) were present on the surface of the decaying wood, and pseudosclerotial plates (melanized mycelial plates) were present in the decaying wood, both of which are signs that indicate infection by *Armillaria* species.
- the remaining intact wood surrounding the decay column was approximately 3.7 - 4 inches at the plane of failure
- There were no external indications of the internal decay present in this tree.

Subject: Findings of Forest Pathologist b6 & b7C upon examination of White Fir Tree